



Instructions Transmission - Pitch Arm Insert

Page 1 of 2

Honda Civic - FK8

Contents - 1x Insert 69151
- Grease

WHITELINE Transmission Insert is designed to improve engine power transfer to the wheels - offering a more direct transition from gearbox to tyres.

- Raise front of vehicle evenly and safely support.

Never rely on a Jack only

- Un-bolt the Pitch arm - remove the 17 and 19mm bolts.



- Remove the soft OE rubber insert (if present).



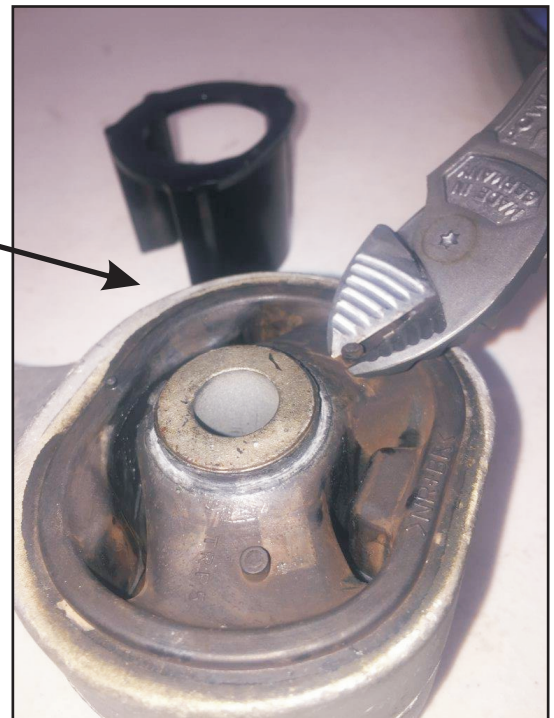
N.B: It is recommended that a licenced workshop or tradesperson carry out the above procedure and that workshop manual and relevant safety procedures are followed in addition to the above.



Instructions Transmission - Pitch Arm Insert

Continued - Page 2 of 2

- Trim OE rubber nipples as per image.
- Using supplied grease, lightly grease new insert - to aid fitment.
- Push Insert in evenly - note "UP" marked on aluminium arm.
- Re-fit arm to vehicle.



N.B: It is recommended that a licenced workshop or tradesperson carry out the above procedure and that workshop manual and relevant safety procedures are followed in addition to the above.