

Instructions

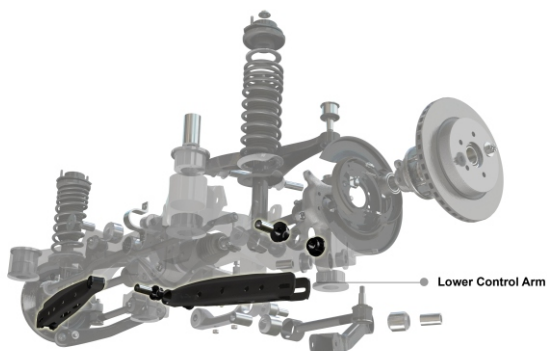
Rear Control Arm - Inner Off-set Bushing

This instruction sheet should be used in conjunction with the workshop manual and proper safety procedures followed.

Application - Subaru - various models
- 2008-on

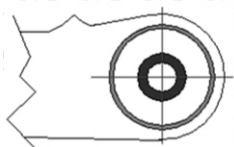
(Refer current catalogue for complete listing)

Contents - 2x bushing 3106
- off-set steel tubes
- grease

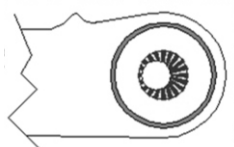


Whiteline recommends noting camber values before install

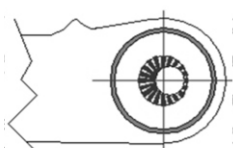
Left Hand Side Shown



Standard Replacement



Camber Decrease



Camber Increase

- Raise the vehicle evenly and safely support.
Never rely on a Jack only
 - Un-bolt rear wheels for better access to rear lower control arm.
 - Proceed to un-bolt and remove the main rear lower control arm.
 - Using a press, press out the original rubber bushing from the control arm.
 - Push new bushings **3106** into clean eye ring.
 - Grease bushing internal diameter and side faces with supplied grease only.
 - Push in supplied off-set tube.
- Note LH image for approx. 1.0 degree in camber change.**
- Bolt up control arm to vehicle.
 - A wheel alignment to correct Toe settings will be required.
 - Re-check all bolts after 500kms/miles

Note: It is recommended that a licenced workshop or trades-person carry out the above procedure and that workshop manual and relevant safety procedures are followed in addition to the above.