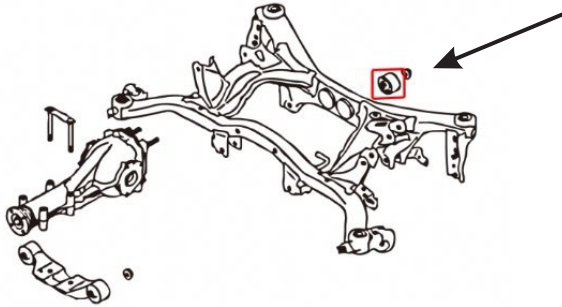


Install Guide

Rear Diff Mount - Rear Bushings



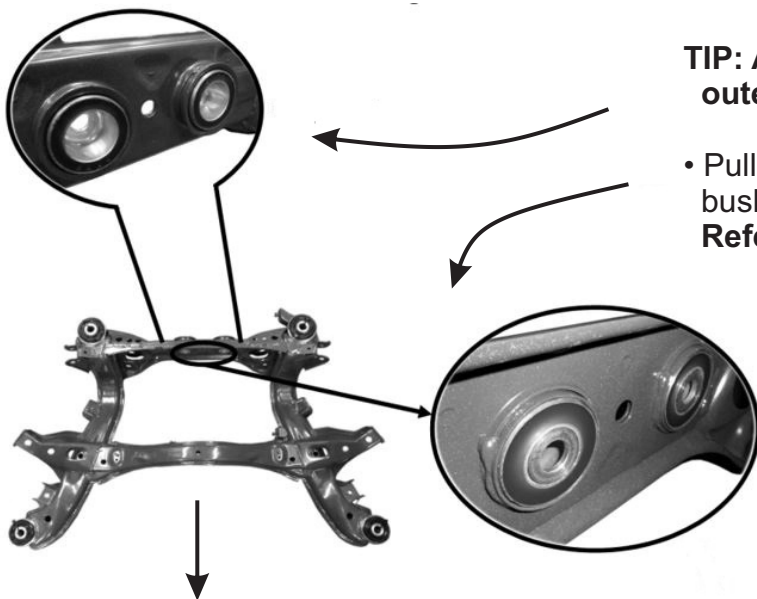
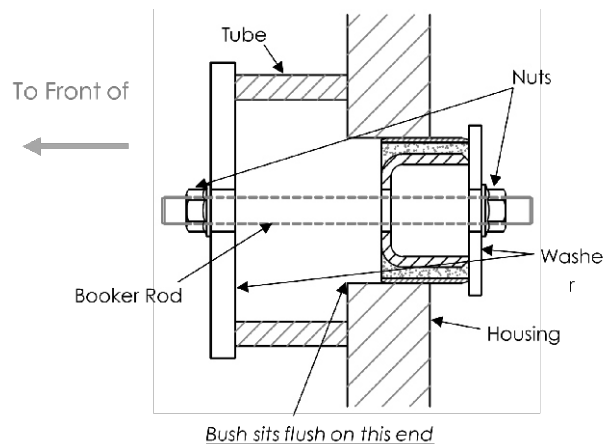
Application - Nissan Skyline R32/33/34
 - Nissan 200SX S14 S15
(always refer current catalogue listing)

Contents - shell bushing 3775 x2
 - grease

- Raise vehicle evenly and safely support

Never rely on a Jack only

- Remove the original Diff bushings by using an Air-hacksaw to cut the original outer steel shell. Careful to not damage the sub-frame.
- Confirm the sub-frame eyes are cleaned with sand paper.
- The new bushings can be 'pulled' into the sub-frame
Refer RH image.



Front of vehicle

TIP: Applying grease to the new bushing outer diameter can help with the install.

- Pull the new bushings in until the rear of bushing is flush with inside of sub-frame
Refer LH image.
- Re-fit Diff to vehicle using original nuts and bolts.
- Road test vehicle. Re-check all bolts after 500kms

Note - It is recommended that a licenced workshop or tradesperson carry out the below procedure and that workshop manual and relevant safety procedures are followed in addition to the above.