

Instructions

Rear Control Arm - Inner Front Bushing

N.B: This instruction sheet should be used in conjunction with the workshop manual and proper safety procedures followed.

Important Notes - this job is a significant exercise. We recommend only attempting if you are familiar with this type of work.

This bushing kit will remove un-wanted toe-steer under acceleration.

Application - Ford Mustang S550

Always refer complete catalogue listing

Contents - Bushing 91752 x2
 - Steel tube 32x16.7x65 x2
 - Grease

- Raise vehicle evenly and safely support.

Never rely on a Jack only

- A chassis stand or jack will be required to support control arm while dis-connecting the shock.

- Once control arm is removed - the bushing will have to be pressed out with a hydraulic Press. Press out complete bushing, including the steel outer shell.

- Press new bushing 91752 into aluminium control arm, until shell is flush with arm.

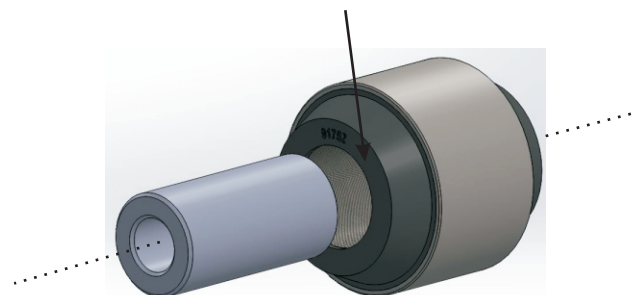
- Grease bushing internal diameter and side face with supplied grease only.

- Push in supplied steel tube and re-fit arm to vehicle.

- A wheel alignment is required soon after install.

- Re-check all bolts after 100kms travelled.

Grease bushing ID and side face with supplied grease only



N.B: It is recommended that a licenced workshop or tradesperson carry out the above procedure and that workshop manual and relevant safety procedures are followed in addition to the above.