

# Install Guide

## Front Control Arm - Lower Inner Rear Bushing

**Application** - Toyota Rav 4  
- Toyota Camry

*(always refer current catalogue listing)*

**Contents** - 2x vertical mount bushings

- Raise vehicle evenly and safely support.

*Never rely on a Jack only*

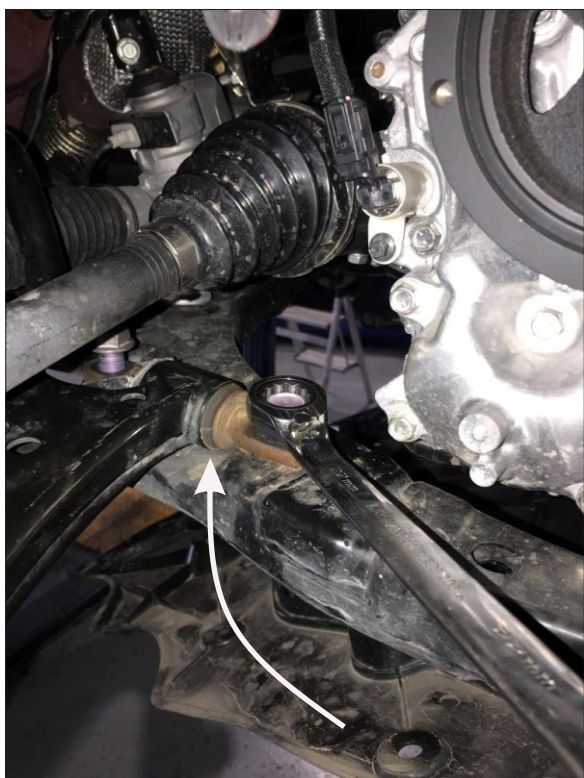
- Proceed to remove front wheels.

**Note** - a hydraulic Press will be required to press out old bushing.

- Lubricate threads before dismantling.

**Note** - some models will require the removal of the side engine mounts - to access the front bushing bolts

- Un-bolt front bushing mount bolts x2



- Un-bolt rear vertical through-bolt (and nut).

**Note** - some plastics may have to be removed to access.

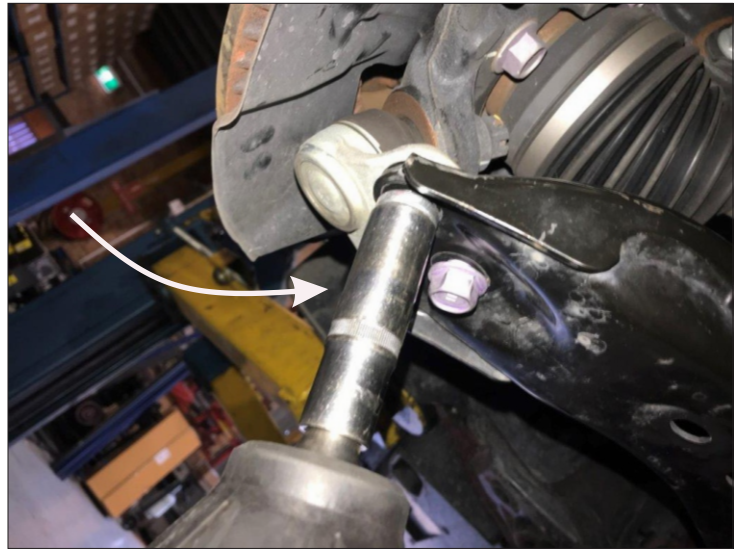
*Refer page 2*



**Note** - It is recommended that a licenced workshop or tradesperson carry out the below procedure and that workshop manual and relevant safety procedures are followed in addition to the above.

## Install Guide Front Control Arm - Lower Inner Rear Bushing

- Un-bolt Ball joint from control arm.
- Proceed to press out original bushings.



**Note - the bushing diameter is 72mm  
A press tool of 70.5-71.5mm OD will  
be required.**



- Press new bushing into arm - confirm bushing sits central in arm.

**IMPORTANT - for caster increase offset bushings refer PAGE 3 for bushing offset information**

- Re-fit arm to vehicle with original bolts.





# Install Guide

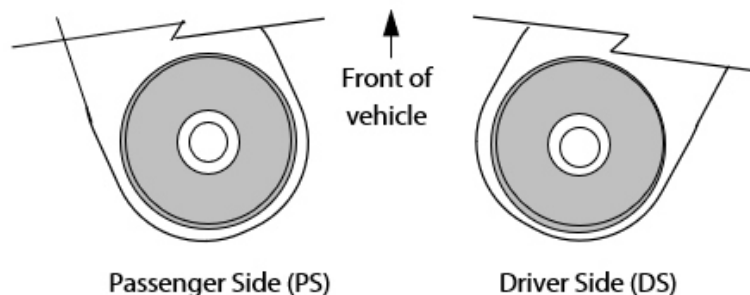
## Front Control Arm - Lower Inner Rear Bushing

**Note - a wheel alignment is recommended immediately - to adjust any Toe change after install.**

- Re-check all bolts after 200kms

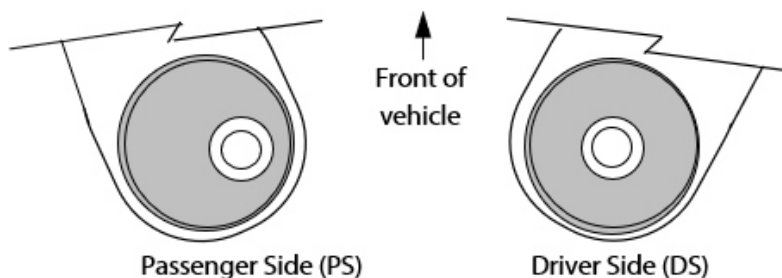
As viewed from the top of the control arm, looking down on rear bushing

– Standard Replacement (No caster change)



– to counteract a slight pull to the left (approx. 0.5 deg. change)

Single Offset – (passenger side caster increase & drivers side no caster change)



– to counteract a strong pull to the left (approx. 1 deg change)

Double Offset – (passenger side increase and driver side decrease caster)

