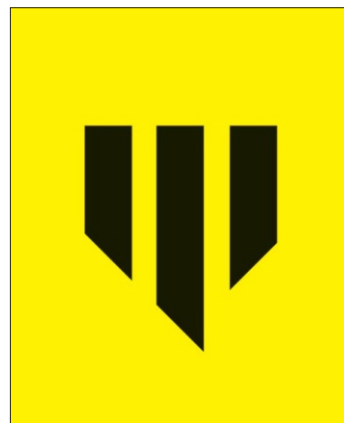


# Install Guide Rear Differential Bushings



**Application** - Mazda Miata Mx5  
- 1989-2005

*(Refer current catalogue for complete listing)*

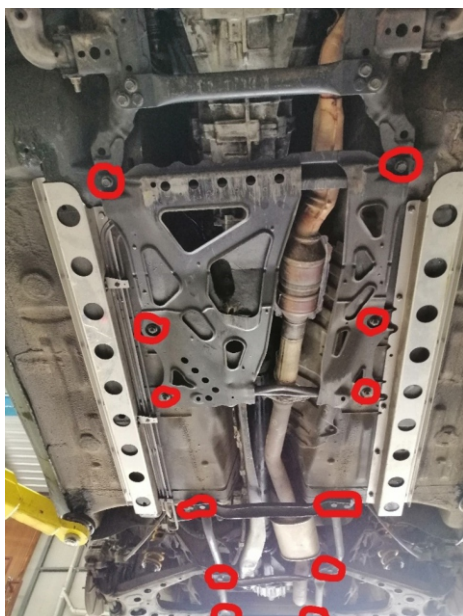
**Contents** - Bushing 2876A x2  
- Bushing 2876B x2  
- Steel tube 25x14.3x64 x2

1 Raise vehicle evenly and safely support.

*Never rely on a Jack only.*

2.Remove any underbody bracing that may interfere.  
Butterfly brace, diff braces if installed etc. Bolt  
locations shown.

See below  
image -



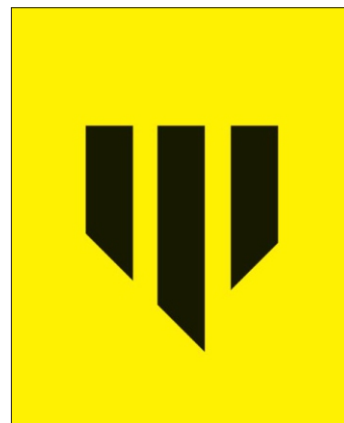
3.Remove the exhaust section that goes under the diff housing, between the cat and muffler.

See below images -



It is recommended that a licenced workshop or tradesperson carry out the above procedure and that workshop manual and relevant safety procedures are followed in addition to the above.

# Install Guide Rear Differential Bushings



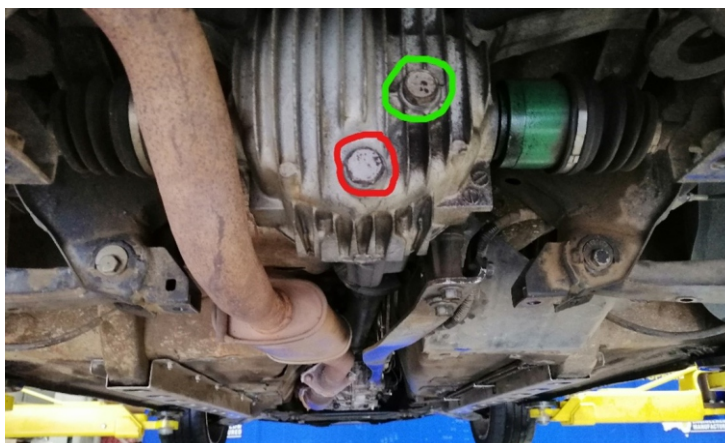
4. Crack diff fill plug to ensure the diff can be refilled.

5. Remove diff drain plug and drain oil.

See RH image -

6. 'Pop' half shafts from retainers with pry bar.

See below image -



7. Remove 4 drive shaft bolts and remove drive shaft from vehicle.

See below image -



8. Remove rear wheels.

9. Remove the upper outer control arm bolts, Loosen the lower outer and upper inner control arm bolts to allow the upper arm and the hub assembly to move freely. (Be careful not to damage ABS or Brake lines).

*Refer page 3 -*



It is recommended that a licenced workshop or tradesperson carry out the above procedure and that workshop manual and relevant safety procedures are followed in addition to the above.

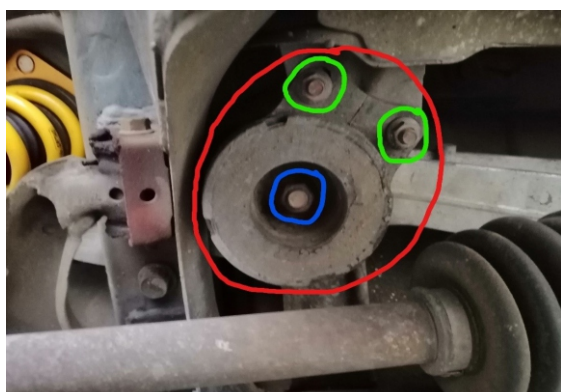
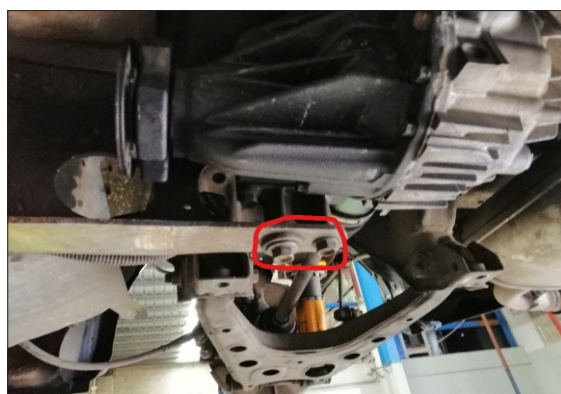
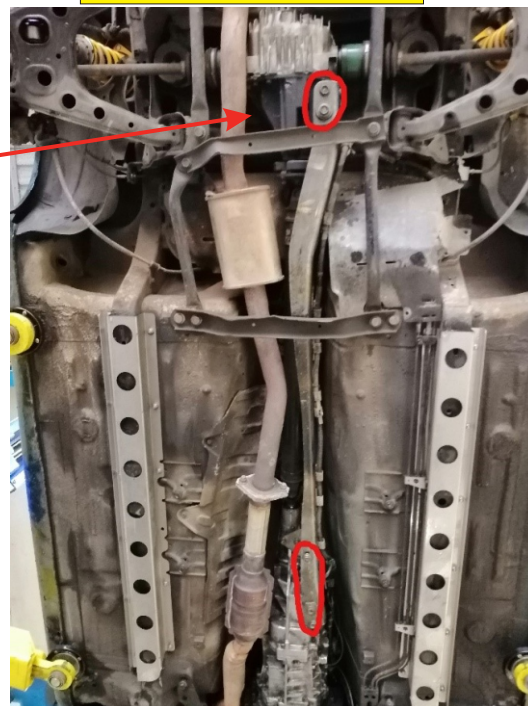
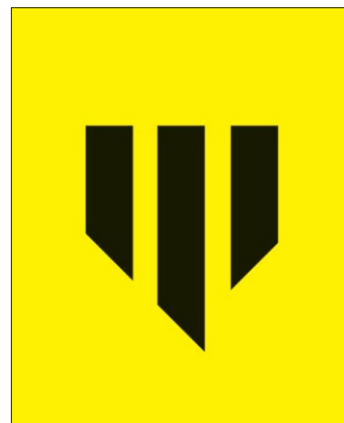


# Install Guide Rear Differential Bushings

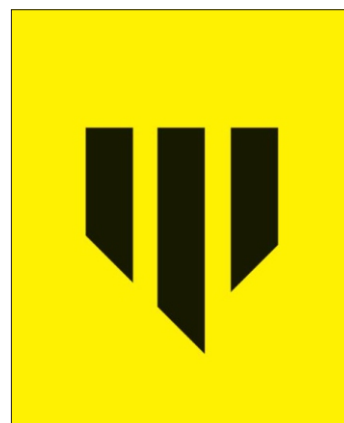
10. Crack the 5 bolts on the **Power Plant Frame (PPF)**.  
See RH image -
11. Undo the two bolts where the PPF attaches to the nose of the diff until they are approximately 10mm proud.  
Refer RH images.
12. Support the diff with a stand (or jack with timber).
13. Hit both bolts upwards to release the pushed in captive nuts.
14. Remove the two rearward bolts entirely as well as the two rear most of the three gearbox end bolts.
15. Use pry bar to work the lower bolt guide out of the diff nose / PPF. Refer very below RH image.
16. Crack the two large diff retaining nuts. Ensure the diff is well supported at this stage. Followed by the 4 smaller nuts for the bracket. Refer very below LH image.

**Note - there is no need to remove the rubber from the 2 outer brackets.**

17. Now, the diff can be lowered while the drive shafts are removed. Careful to not damage the seals.



# Install Guide Rear Differential Bushings



18. Below LH images shows the bushing orientation and situation in the diff housing.



19. Remove the old rubber bushings from the aluminium housing. Careful to not damage the housing.

20. Pop in the new bushings as per the LH images.

21. Proceed to re-fit the diff to vehicle. When re-fastening the PPF, it should be supported to ensure it sits level and does not allow the diff nose or gearbox to sag. Failure to do so can cause excessive drive-line and body noise and vibration.

Also - careful with the driveshafts and seals



22. Fill diff with fresh oil.

23. When bolting control arms back in, for rubber bushings, its best to tighten at ride height.

24. Road test vehicle, then re-check components.

25 Re-check all bolts after 500mls/kms.



It is recommended that a licenced workshop or tradesperson carry out the above procedure and that workshop manual and relevant safety procedures are followed in addition to the above.