

GREASE FREE TECHNOLOGY

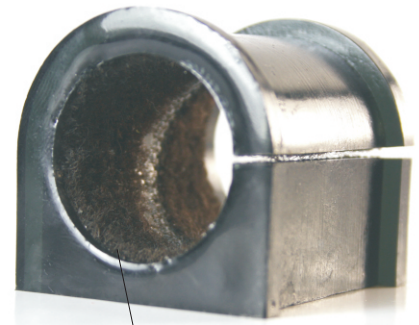


Introducing Grease Free Technology Bushings

Bushings supplied in this kit feature not only the latest synthetic elastomer bushing material technology but a high performing PTFE inner lining boasting an extraordinary low coefficient of friction. This inner lining eliminates the need to lubricate the bushing on installation and therefore makes these bushing 'grease free'!

Superior friction management

- reduces heat build up known to deform or degrade bushing over time
- dramatically reduces high frequency noises (squeaking)
- eliminates the need for maintenance/ greasing



PTFE LINING

Installation tip

Ensure a clean mating surface when installing these bushings for optimum performance!

Frequently Asked Questions

What happens if I do apply grease to the lining?

Don't stress, simply wipe away as much of the lubricant from the surface as possible and install. Adding grease does not further improve the bushings function/ performance nor does traces of lubricant impede the function/ performance.

Do I need to grease other areas of the bushing?

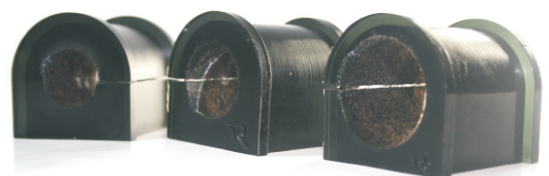
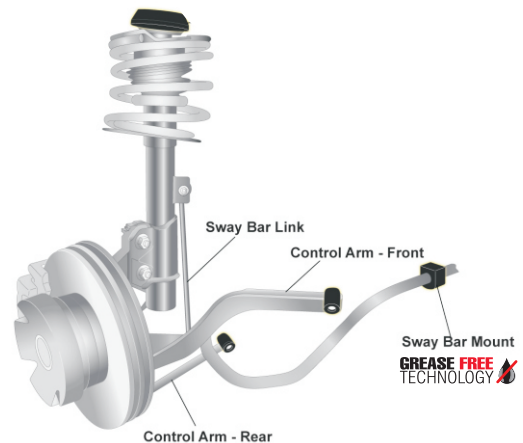
Simply, no! Unless the kit is supplied with a grease packet and lubrication instructions, no other area of the bushing requires lubrication.

Do these bushings require maintenance?

Significant improvements in grease retention within bushing design has dramatically improved over recent years, however this new grease free technology does away with all lubricants and subsequent or periodical maintenance.

Is this technology available across the entire range?

For the most up to date offering of grease free technology bushings visit the website!



FRICION FREE | SILENT OPERATION | MAINTENANCE FREE

Instruction Sheet

FRONT SWAYBAR KIT

Z5383

Application:

Holden Torana LH LX UC

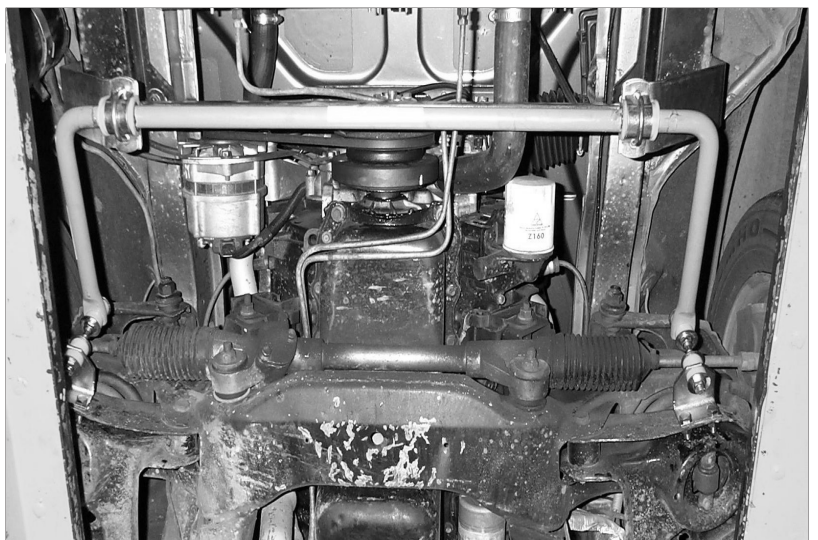
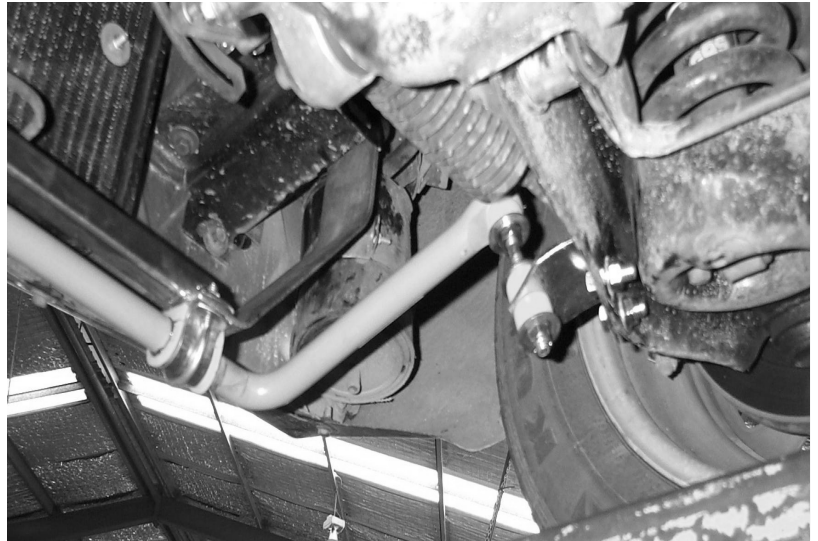
(This product may foul on vehicles with factory brake ducts)

Instructions

1. Raise vehicle evenly - we suggest using ramps.
2. Remove the outer bumper bolts - (in chassis rail).
3. Mount the supplied brackets (already bolted to brace) to the chassis - use the OE bolt for the front and supplied bolt for the rear hole.
3. Grease ID of bushings and fit to the swaybar.
4. Using the supplied saddles and U bolts, mount the swaybar to the brace as per images.
5. Mount the supplied links to the swaybar and supplied L shaped brackets - do not over tighten.

Please note this should be performed at ride height.

6. Centralize the swaybar and line up the brackets with the front control arms - see images.
7. Centre-punch and drill 3/8 holes into the arms.
8. Mount brackets to the front arms as per images.
9. Re-check all bolts after 100km travelled.



Warning: Please drive carefully while you accustom yourself to the changed vehicle behaviour.

A.B.N. 99 124 177 297