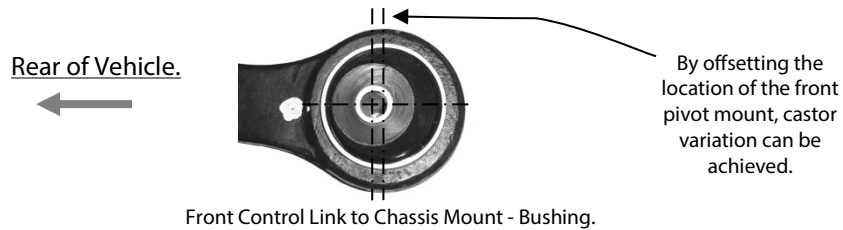


Fitting Instructions Z6295

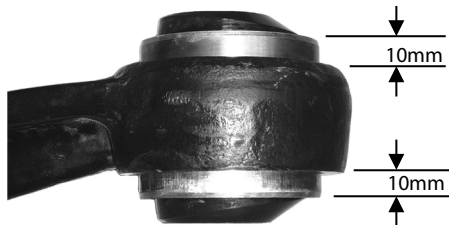
Ford Territory

Front Control Link to Chassis Mount Bushing

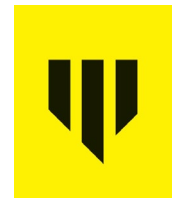


Note: Polyurethane bushes must be fitted to both sides of the vehicle.

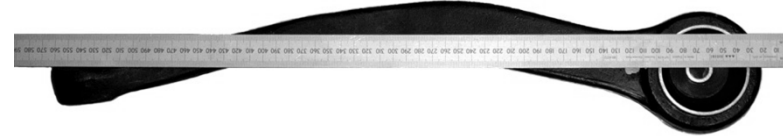
- Wheel align the vehicle before the job is started and note castor settings;
- Remove the Front control links from the vehicle;
- Remove original bushings from the control link brackets with the use of a hydraulic press and suitable pressing tools;
- With reference to the diagrams, align the bushing in the brackets, so that the hole in the bushing is positioned to give the desired caster result;
- Press the new bushing into the Control link brackets, insuring that equal amounts of the new steel outer shell protrude out each side of the bracket approx. 10mm each side as per photo below.



Note: Make sure that the bushing is orientated correctly refer to the drawings attached.



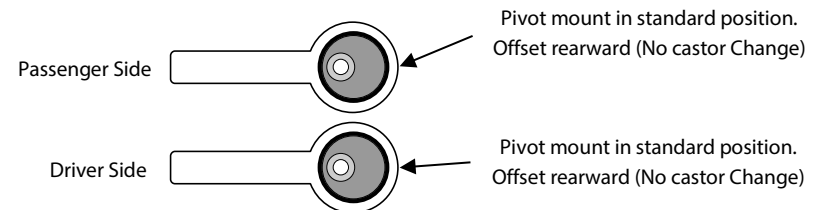
- A straight edge may be used to help align the offset bushings as per photo below;



- Lubricate the inside of the new polyurethane bushing with the grease supplied and install the steel crush tube. Lubricate the side faces of the new bushings and the areas on the chassis that contact the new bushings.
- Refit the control links with the new bushes & tubes into the vehicle.
- Wheel align vehicle and check new settings.

The diagrams below show the off-set bushings in the Front Control Links, as viewed from the side of the control link

– Standard Replacement. No castor change.



– To counteract a slight pull to the left

Passenger side castor standard & driver's side reduced to achieve castor split.

