

PARTS, SERVICE & ACCESSORIES

CAMRY

November 2017 Production Onwards
ACRYLIC HEADLAMP COVERS
 Installation Instructions

Accessory Part No. PZQ14-33160/PZQ14-33170

Installation Time: Approx. 15 mins

Place these instructions in vehicle's glove box after installation is complete
Care Instructions:


Do not slam bonnet.


 Clean Headlamp Covers
 with a mild detergent and
 water solution.

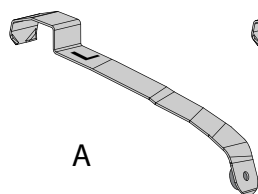
 Do not use automatic
 car wash.

 Do not use abrasive,
 spirit or solvent
 based cleaners.

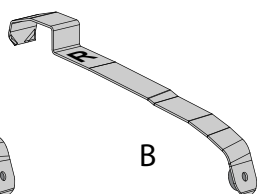
Item	Component Name	Qty	Part number
1	Headlamp Covers Set	1	PZQ14-33160/ PZQ14-33170
2	Top Inner Left Metal Clip "L"	1	PZQ14-3316A/ PZQ14-3317A
	Top Inner Right Metal Clip "R"	1	
	Top Outer Metal Clip	2	
	Bottom Inner Metal Clip "I"	2	
	Bottom Outer Metal Clip "O"	2	
	Washer	8	
	Screw	8	
	Anti-Abrasive Tape	10	
	Alcohol Wipe	1	
	Fitting Instruction Flyer	1	



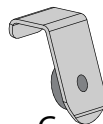
Item	Qty		Item	Qty	
A	1	Top Inner Left Metal Clip "L"	F	8	Washer
B	1	Top Inner Right Metal Clip "R"	G	8	Screw
C	2	Top Outer Metal Clip	H	10	Anti-Abrasive Tape
D	2	Bottom Inner Metal Clip "I"	I	1	Alcohol Wipe
E	2	Bottom Outer Metal Clip "O"	J	1	Fitting Instruction Flyer



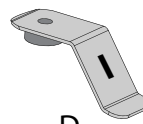
A



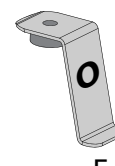
B



C



D



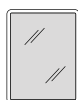
E



F



G



H

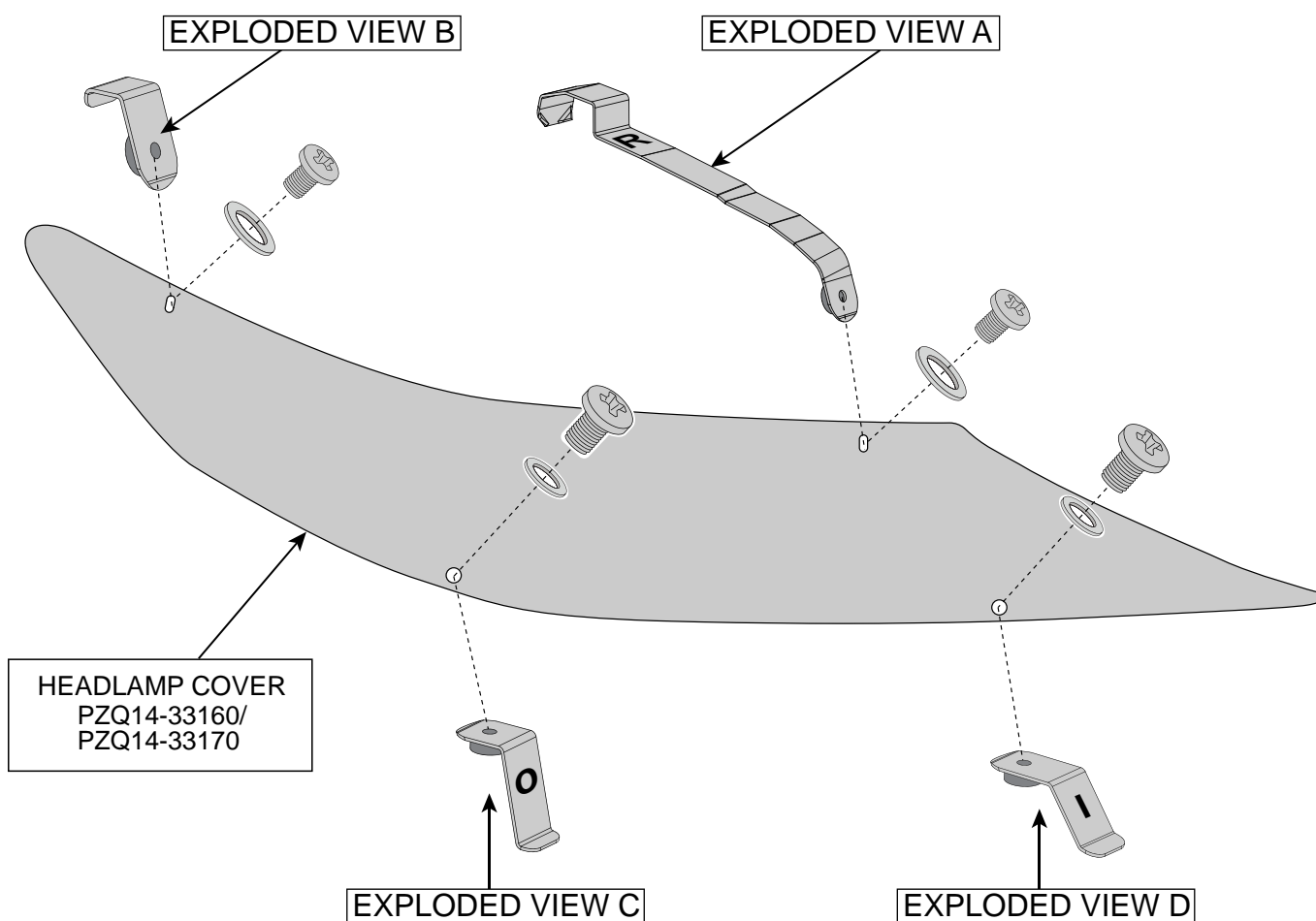


I



J

FITTING KIT
PZQ14-3316A / PZQ14-3317A



LHS part is mirror image

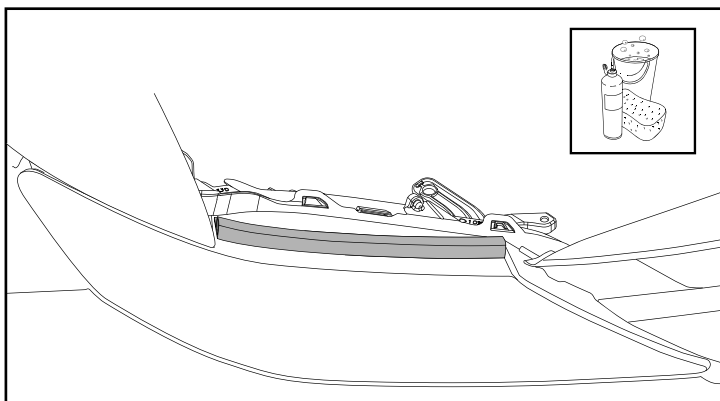


Diagram #: 1

1. Read installation instructions thoroughly before commencing installation. Open the bonnet and thoroughly clean and dry headlamps and surrounding areas.
See Dia #1.

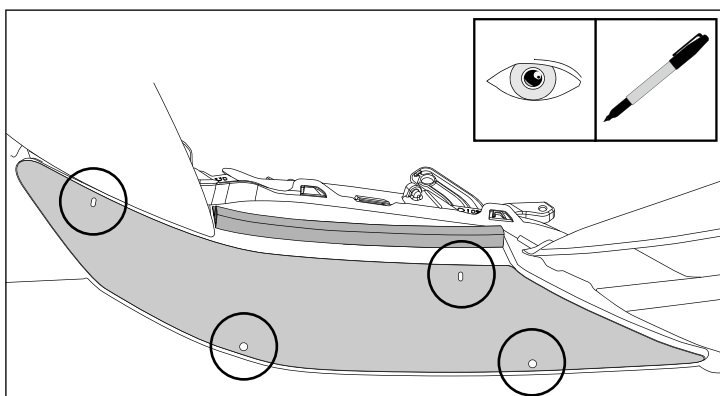


Diagram #: 2

2. Trial fit the Headlamp Cover centrally on the headlamp.

Note the slots at the top of the Headlamp Cover and mark these locations onto the headlamp assembly.

Note the holes at the bottom of the Headlamp Cover and mark these locations onto the bumper directly below the holes.

See Dia #2.

Note: Use a Non-Permanent Marker.

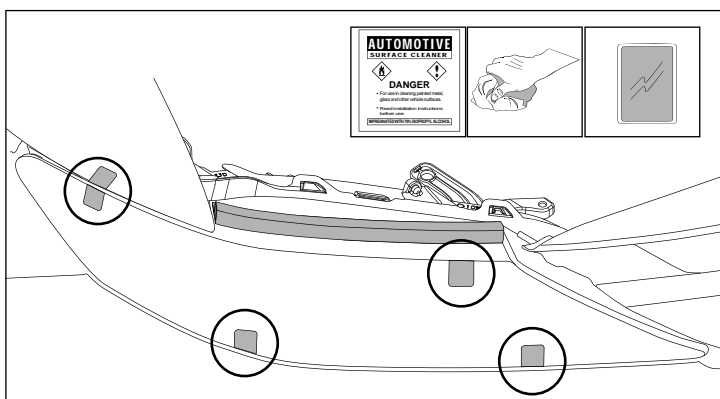


Diagram #: 3

3. At the previously noted and marked slot and hole positions, clean the headlamp lens and fender with the alcohol wipe provided. Remove any residue with a clean dry cloth.

Fit the Headlamp Cover centrally on the headlamp, holding it approximately 1-2cm off the headlamp surface.

Adhere the anti-abrasive tape strips provided to all slot and hole positions and on the fender opposite the top outer clip. Approximately two thirds of the abrasion resistant tape should be on the headlight surface.

See Dia #3.

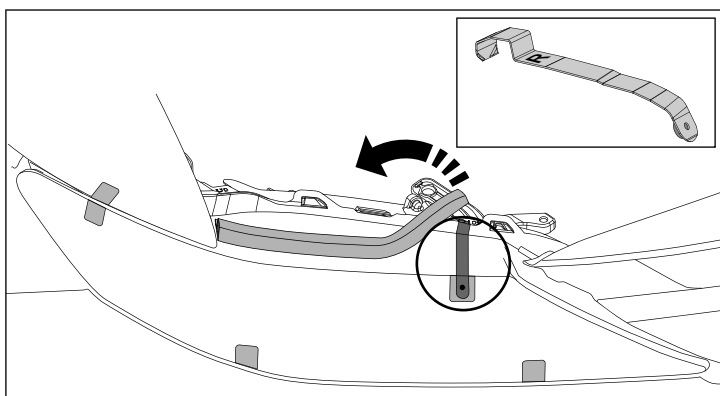
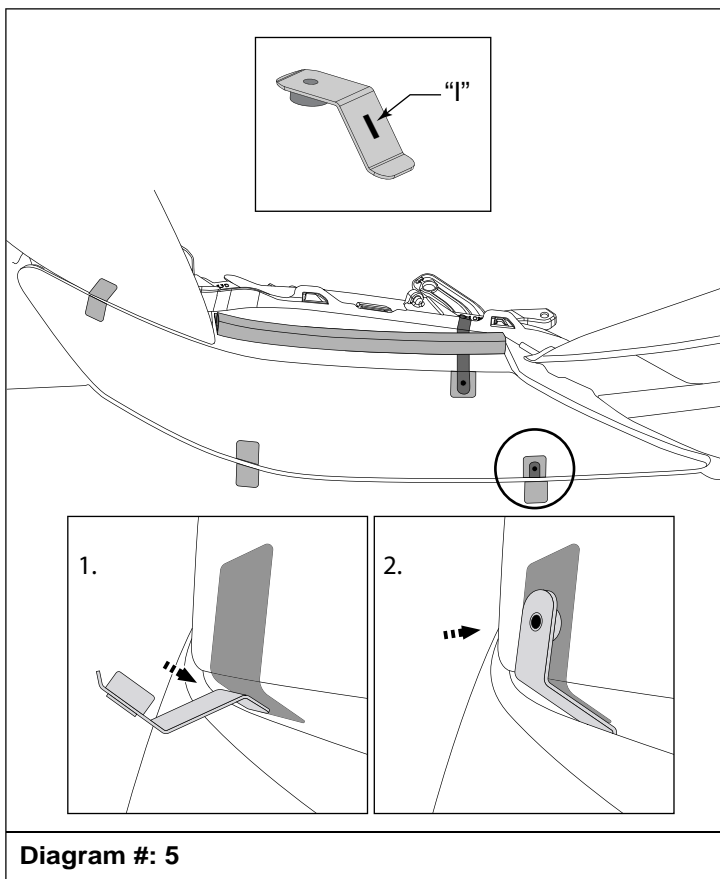


Diagram #: 4

4. At the previously noted and marked top inner slot position, carefully unpeel the top seal from the headlight and fit the metal clip to the top of the headlamp. Lower and re-adhere the seal to the headlight over the clip.

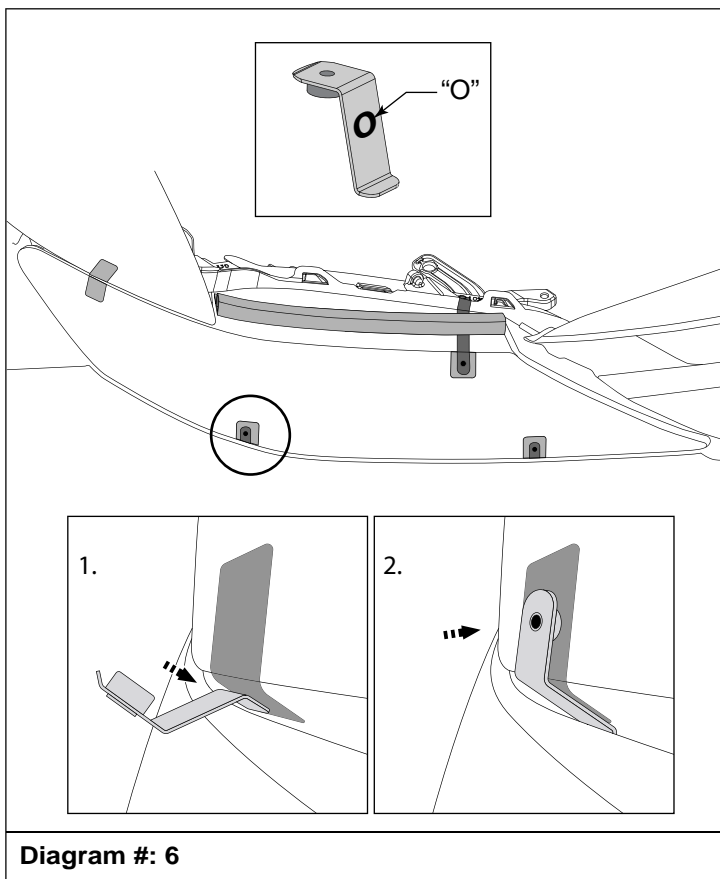
Ensure that the metal clip is located on the anti-abrasive tape strip and not on the headlamp lens.

See Dia #4.



5. At the previously noted position, fit the Bottom Metal Inner Clip "I" between the bumper and headlight assembly.

Ensure that the metal clip is located on the abrasion resistant tape and not on the headlight lens.
See Dia #5.



6. At the previously noted position, fit the Bottom Metal Outer Clip "O" between the bumper and headlight assembly.

Ensure that the metal clip is located on the abrasion resistant tape and not on the headlight lens.
See Dia #6.

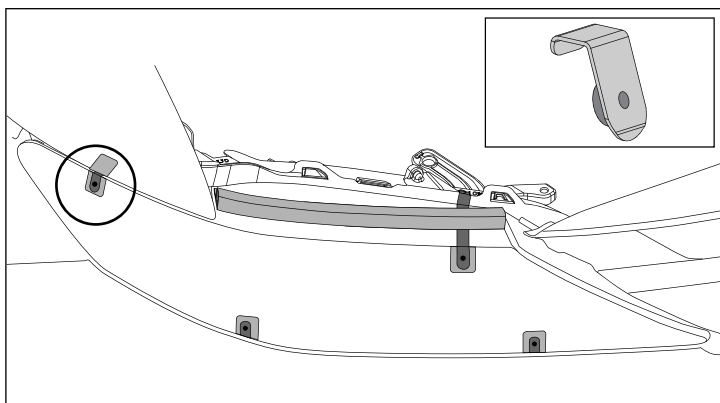


Diagram #: 7

7. At the previously noted position, fit the Top Outer Metal Clip between the Fender and headlight assembly.

Ensure that the metal clip is located on the abrasion resistant tape and not on the headlight lens.

See Dia #7.

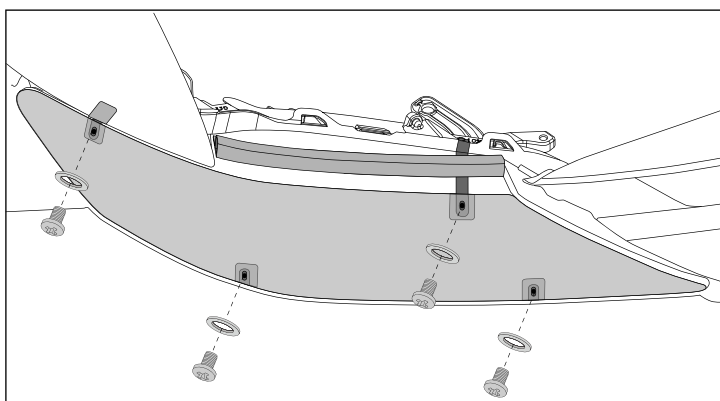


Diagram #: 8

8. Loosely secure the Headlamp Cover to the two bottom metal clips and two top metal clips with the screws and washers provided.

See Dia #8.

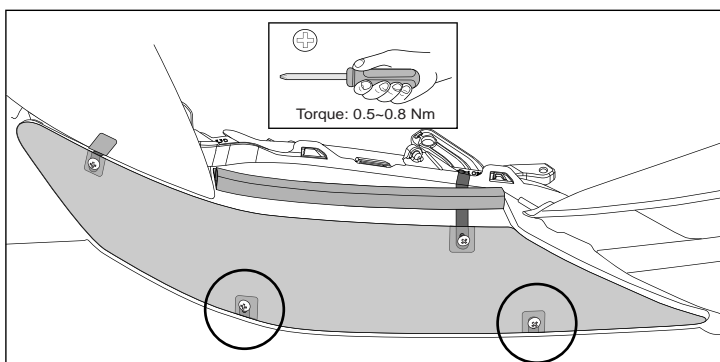


Diagram #: 9

9. Tighten the two bottom metal clip screws to the specified torque setting.

See Dia #9.

Note: Ensure torque setting 0.5~0.8Nm is used.

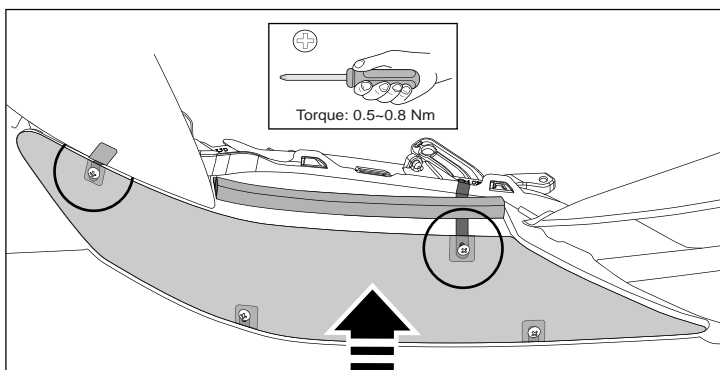


Diagram #: 10

10. Tighten the two top metal clip screws to the specified torque setting, while applying upwards pressure to the Headlamp Cover.

See Dia #10.

Note: Ensure torque setting 0.5~0.8Nm is used.

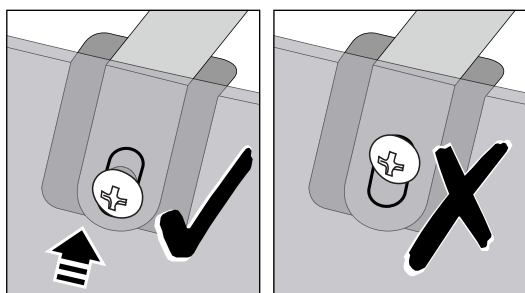


Diagram #: 11

11. Ensure the top screw is as close to the bottom of the vertical Headlight Protector slot as possible.

See Dia #11.

IMPORTANT: Conduct final inspection, ensuring all screws are tightened, and clips are correctly installed and not touching the headlamp surface.

TO REMOVE : Remove screws and washers, then remove Headlamp Cover from the Headlamp Assembly.