

Instructions

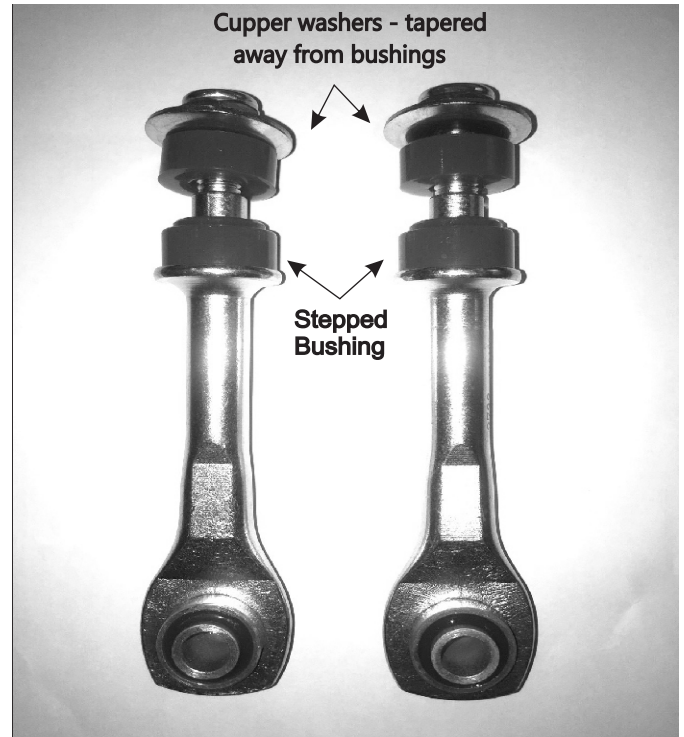
Rear Swaybar link Assembly

Application:

Ford Falcon - BA-FGX
Ford Territory - SX-SZ

Instructions

1. Safely raise rear of vehicle.
 2. Un-bolt sway-bar from the lower link bushing.
Do not discard OE nut and bolt.
 3. Un-bolt upper link nut and remove link.
 4. The OE upper link bushings are 'one-piece' and may require some force from a lever bar to remove.
 5. Once link bushings are removed, check/confirm link hole area is clean.
 6. Place the stepped upper link bushing on supplied link - place link in control arm. Place the flat upper link bushing to the high side of control arm.
- Add supplied cupper washer - cupper washer to taper away from bushing.
Add supplied Nyloc nut - do not tighten yet.
7. Apply small amount of grease to lower bushing face.
Re-use lower OE nut and bolt with supplied flat washer - place supplied washer between bolt head and lower bushing.
 8. It is recommended all nuts and bolt be tightened when vehicle is at ride height, to OE specification.
- Re-check bolts after 100kms travelled.



N.B: It is recommended that a licenced workshop or tradesman carry out the above procedure and that a workshop manual and relevant safety procedures are followed in addition to the

Instructions

Rear Trailing Arm - Blade Bushing

N.B: This instruction sheet should be used in conjunction with the workshop manual and proper safety procedures followed.

1. Raise vehicle evenly and safely support.

Application: Ford Falcon BA-FGX
Ford Territory SX-SZ

Note - for Falcon, lift the rear seat to un-plug ABS sensor.

This job can be performed on either a 2-Post or 4-Post hoist.

Contents: 2x Greasless bushings
2x Steel Pins

2. Once ABS wiring is free, proceed to un-bolt Trailing arm.

3. Completely Press out the old bushing with a Press, including the outer steel shell.

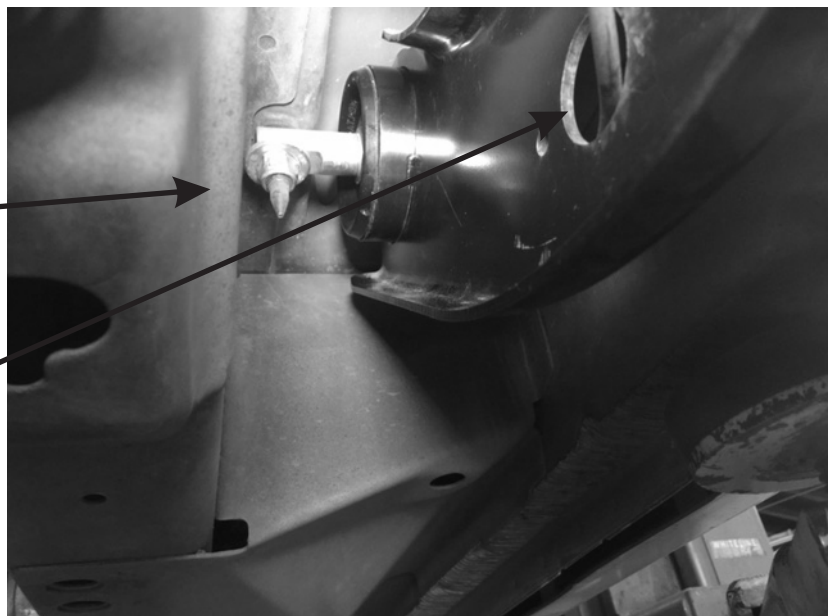
4. Press in new supplied bushing - this is best achieved with soapy water and a flat surface.

5. Slide new Pin in - confirm Pin is near central (The bushing will centre itself while driving)

6. Bolt Up arm to vehicle and plug ABS sensor in. Tighten bolts to manufacturers specs - it is suggested to use Loctite on Hub bolts as per manufacturer.

Position Pin centrally
as per image

Un-plug ABS wiring -
Lift seat for Falcon only



N.B: It is recommended that a licenced workshop or tradesperson carry out the above procedure and that workshop manual and relevant safety procedures are followed in addition to the above.