

# Fitting Instructions

## BFR58

# WHITELINE

Redranger Pty Limited  
4 Warringah Close, Somersby, NSW 2250 Australia  
Ph: 61 2 4340 2355 Fax: 61 2 4340 2466  
E-mail: sales@whiteline.com.au  
A.B.N. 99 124 177 297

*Flat out*

Code: Z194

### Application:

Full kit rear swaybar to suit:  
Ford Falcon 4/00-06 AU-BA-BF ute  
*Always refer to current catalogue for complete application listing.*

### Specifications:

BFR58 - 20mm non-adjustable full kit swaybar

### Contents:

- 1 x swaybar
- 2 x swaybar mount bushes 22mm
- 2 x 3/8" x 3.25 inch bolts
- 2 x U-bolts
- 6 x 3/8" flange nuts
- 2 x M10 x 48mm OD washers
- 2 x chassis brackets - 'L'
- 2 x axle brackets - plate
- 2 x axle brackets - saddle
- 2 x link pins
- 1 x link nut pack
- 1 x link bush pack
- 1 x grease bag

### Fitting Instructions:

Please read complete fitting instructions and check kit components prior to fitment. Whiteline recommends that all work be carried out by a qualified technician.

Installation of this product must be done with the vehicle at normal ride height. To enable better access to the undercarriage, drive-on hoist/ramps may be used.

1. Remove spare wheel.
2. Apply grease to the inside of poly D-bushes, and fit onto the swaybar.
3. Using new U-bolts and axle mounting brackets (saddles & plates) and with the swaybar arms pointing to the rear of the car, attach the swaybar to the underside of the axle. Tighten using new 3/8" nuts. Refer to photo 1.
4. Attach new chassis 'L' brackets to the links, and loosely connect to the swaybar. Refer to figure 1 and photo 2.
5. Swing the swaybar up, so that the arms are horizontal.
6. Mark the position of chassis mounting holes through the centre of the bracket mounting holes. Refer to photo 3.
7. Centre punch and drill a 10mm hole through the chassis rails, as shown in photo 4.
8. From the outside of the chassis, slide new bolts with large washers through new holes, and attach chassis bracket (with link) to the chassis. Tighten using new 3/8" flange nuts. Refer to photo 5.
9. Tighten top and bottom link bushes, evenly on both sides.  
*Caution: do not over tighten swaybar link bushes. Nuts should be tightened until washer meets the bush & stops rotating. then tighten a further 2/3 of a turn. Over tightening compresses and pre-loads the polyurethane bush which reduces flexibility and may cause failure.*
10. Tighten all nuts and bolts.
11. Replace spare wheel, and test drive the vehicle carefully.
12. Check & re-tension all fittings again after 100km's but no more than 200km's.

For noise and friction free operation, carry out periodic inspections and maintain proper bush lubrication.

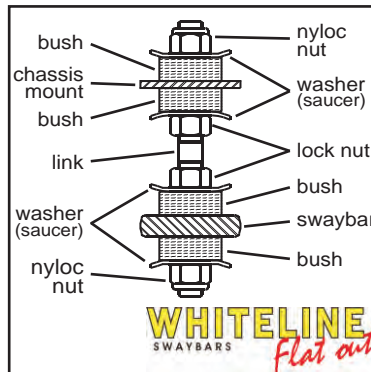


Figure 1.

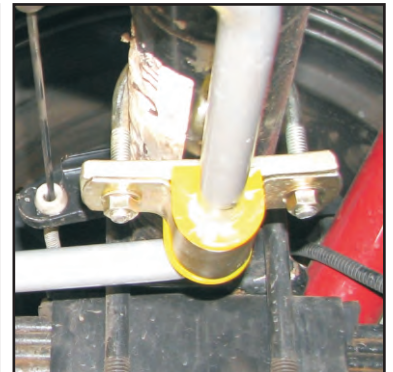


Photo 1.



Photo 2.



Photo 3.



Photo 4.



Photo 5.

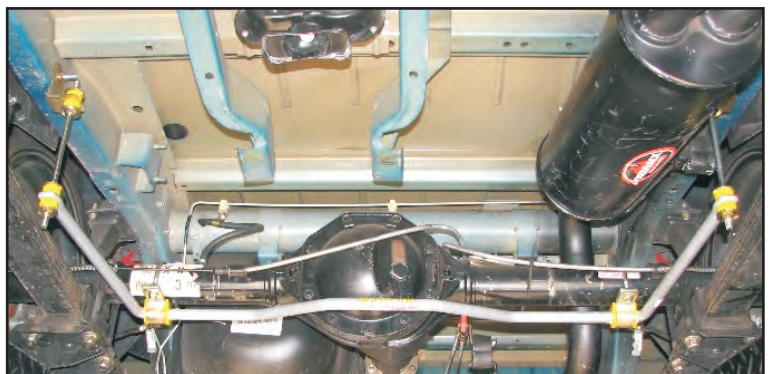


Photo 6. BFR58 complete assembly

**Warning:** Please drive carefully while you accustom yourself to the changed vehicle behaviour.