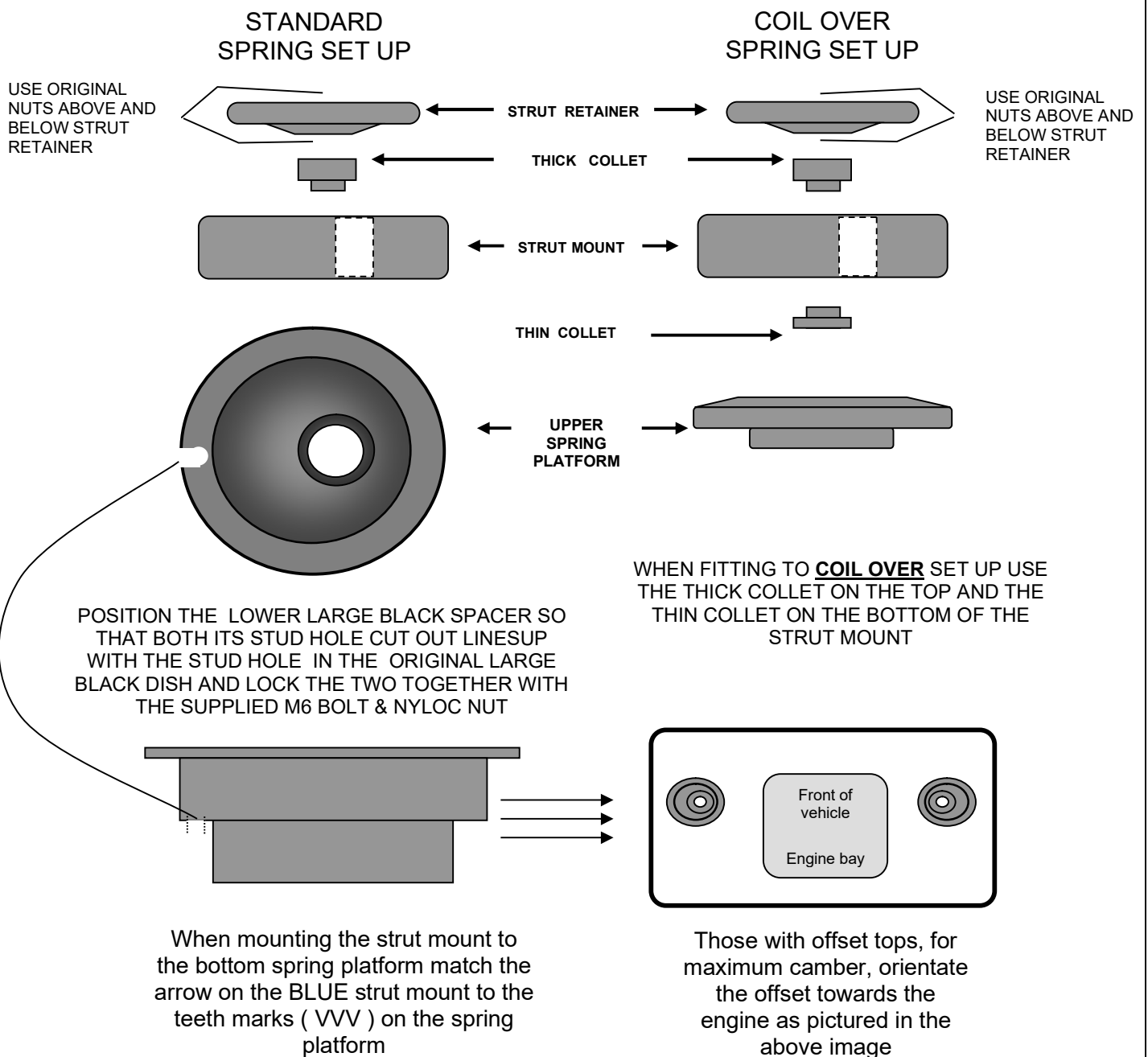


# INSTALLATION GUIDE

Z5368

## STRUT MOUNT

1. Remove strut from vehicle and remove strut mount,
2. Retain the two nuts used at the top of the mountings
3. Refer to the illustrations below, making sure of your replacement (ie standard spring set up or coil over). Commence from the bottom of the illustration and work your way up the strut ensuring you pay attention to the all the information provided.
4. Reinstall the struts and torque nuts to manufacturers specification
5. Wheel align the vehicle and make adjustments to achieve desired settings



This procedure must be carried out by a qualified person