



TOYOTA KLUGER CARGO BARRIER FITTING INSTRUCTION PART #608525

YEARS OF MANUFACTURE – SEPT. 2003 ONWARDS



TO SUIT CV 5 SEAT, NON SIDE AIR CURTAIN VEHICLES ONLY
NOT SUITABLE FOR 7 SEAT MODELS

This Cargo Barrier is capable of being located in two positions, behind the 2nd row of seats and behind the first row of seats with the rear seats in their folded down position. The installation kit contains sufficient components for fitment to both locations. A high degree of technical competence is necessary to correctly install this product.

We recommend this Cargo Barrier be installed by an Authorised outlet to ensure the barrier installation complies with AS/NZS 4034 Standard.

The cargo barrier is designed, manufactured and fitted to decrease the impact hazard in an accident to occupants from cargo carried within the interior cargo space of the vehicle. In the event of an accident, a cargo barrier can reduce injuries caused by cargo intruding into occupant's space.

Installation time approximately 2.5 Hours



WARNINGS

- Strict compliance with fitting instructions is essential for this safety product to perform as designed. Refer user instructions regarding correct usage of the Cargo Barrier.
- Seat, seat belt or child restraint anchorage's must not be used for mounting the Cargo Barrier.
- Where high tensile threaded fasteners are used, the cargo barrier must be installed using the size and grade fasteners specified by Milford Industries.
- Do not drill, rivet, adhere or attach objects to the front or rear of the Cargo Barrier.
- When load is positioned against cargo barrier, secure the load with a restraint system.
- During a collision moving cargo may damage seat belts or tether straps of a child restraint device, or its anchorage. Load should be carefully positioned so as not to come in contact with these items.
- Do not obstruct seat belts or child restraints, or their operation.
- Long thin items of cargo should be positioned in the vehicle with the long axis across the vehicle to minimize the penetration risk.
- If involved in an accident or accidentally damaged, the cargo barrier should be replaced and the anchorage's repaired to as new condition.
- Clean with soap and water only. Do not use solvents or chemicals. Discard Cargo Barrier if it becomes rusted.
- Do not store cargo barrier outside in direct sunlight.
- It is extremely dangerous to ride in the cargo area of the vehicle behind the cargo barrier. It is recommended that the cargo barrier be removed. In a collision people or children riding unrestrained in these areas are more likely to be seriously injured or killed.
- Never leave a child in the vehicle unattended, particularly in the rear cargo area. The cargo area should never be used as a play area for children.
- The Cargo Barrier may deform and significantly intrude into occupant's space in an accident.
- The plaque shall not be removed from the cargo barrier.
- Failure to comply with warning notes may prevent the barrier protecting the occupants.
- Parents should explain to children how and when to use **EMERGENCY ESCAPE HAMMER** attached to Cargo Barrier.

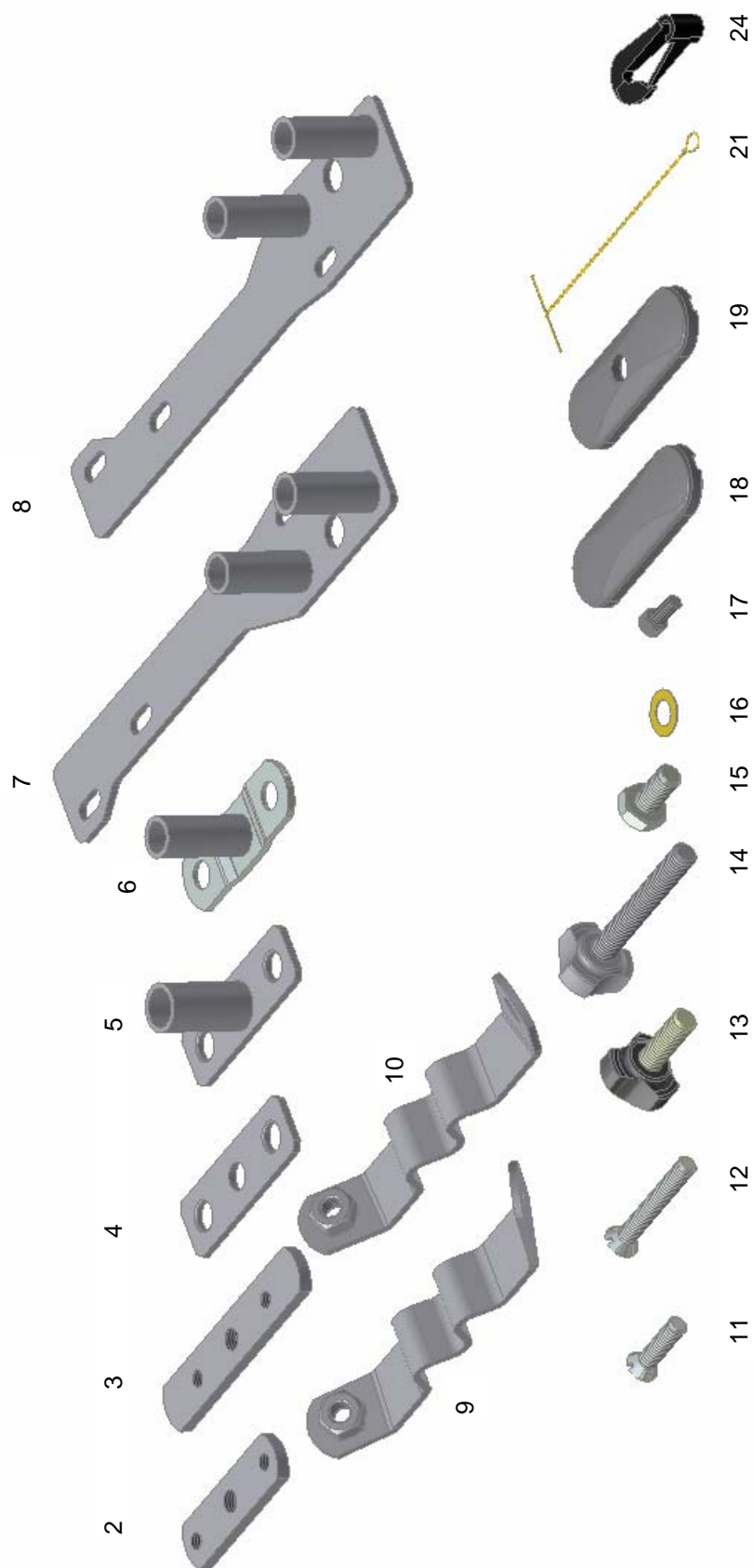
NOTICE TO FITTERS AND DISTRIBUTORS

Please ensure this notice and the fitting instructions are left in the glove box after installation of Cargo Barrier

TOOLS REQUIRED	<ul style="list-style-type: none"> • Hammer • Screwdriver • Drill • Masking Tape • Marker • Centre Punch • 5mm, 9mm, 11mm Drill Bits • 16mm, 22mm Hole Saws • Drill stops • 16mm, 22mm Vinyl Cutters • Steel Rule • Scriber • Trim removing tool • Tin snips • Vacuum cleaner • Drop sheet • Product & Installation Guide (Optional) 	FITTERS ADVICE	<p>Note: To fit the Cargo Barrier the following is essential:</p> <ul style="list-style-type: none"> • A positive drill stop should always be used to prevent accidental damage to external panels, fuel lines etc. • Always drill perpendicular to surface (Unless stated otherwise). • A vinyl cutter should be used for all soft material (i.e. Hood lining, floor covering etc). This can be made by grinding the teeth from a hole-saw at an angle of about 45 degrees. • Care should be taken when applying Tekote Sealer/Rust Preventative to all holes drilled to negate the possibility of skin and eye irritation. • Check screws in relevant components by hand before installation. Should there be resistance re-tap threads and re-check. • Before marking or drilling for this Cargo Barrier, check vehicle for LPG Conversion. If LPG is fitted, locate gas unit and all lines attached and take extreme care whilst installing this Cargo Barrier. • Care Should be taken not to cross thread the fasteners during installation of components to the vehicle.
-----------------------	---	-----------------------	--

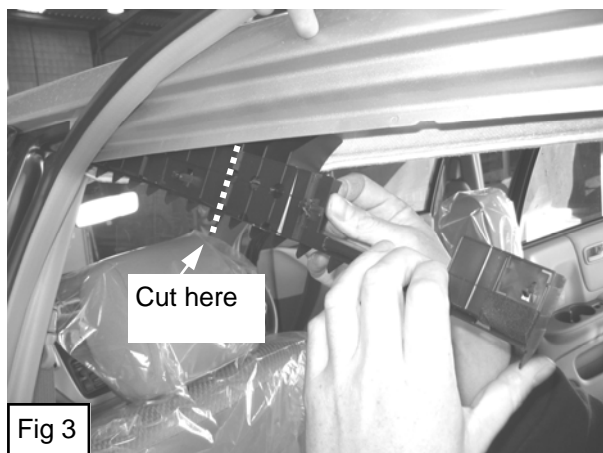
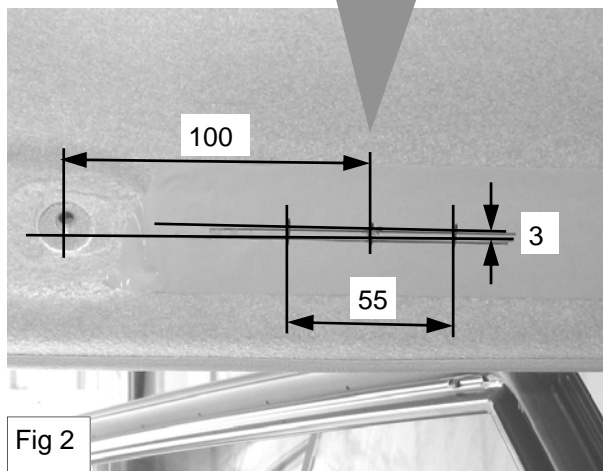
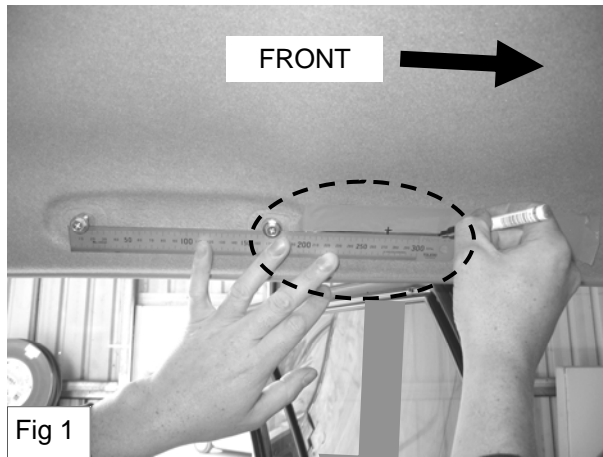
PARTS LIST

Item	Component name	Part #	Qty.
1	Cargo Barrier Panel (Not Illustrated)	608525	1
2	Mounting plate	754000	2
3	Mounting plate (Long)	754593	4
4	Metal cover plate/countersunk (No spacer)	754235	2
5	Metal cover plate with Ø19 x 36mm spacer tube	754985	2
6	Metal cover plate (formed) with Ø16 x 38mm spacer tube	753011	2
7	Metal cover plate (250mm long) with 38mm spacer tubes - RH	608546	1
8	Metal cover plate (250mm long) with 38mm spacer tubes - LH	608545	1
9	Extension strap (Left side)	774876	1
10	Extension strap (Right side) Marked with yellow dot	774976	1
11	Screw, 5/16" BSW x 1" CSK	912000	8
12	Screw, 5/16" BSW x 2 1/2" CSK	912555	4
13	Milbolt M10 x 1.5 x 29mm	912830	2
14	Milbolt M10 x 1.5 x 69mm	913085	2
15	Screw, Hex Hd, M10 x 1.5 x 20 long	912205	2
16	Crinkle washer Ø10	932125	6
17	Screw, Socket Hd cap, M6 x 12mm	711420	6
18	Plastic mount cover — Without Hole (Use when front position roof mounts not in use)	754965	2
19	Plastic mount cover — With hole	754960	2
20	Tekote Sealer/Rust Preventative (Not illustrated)	906300	1
21	Installation tool	754200	4
22	Adhesive warning label (Orange) (Not illustrated)	905017	1
23	Cleaning pad (Not illustrated)	906302	1
24	Snap hook	904673	4



MOUNTING POINT LOCATIONS

Passenger Side shown

**TOP FRONT HOLES***(If front position required)*

1. Remove grab handles from over rear side doors.
2. Loosely insert grab handle screws back into captive nuts.
3. Apply masking tape to roof trim just forward of grab handle.
4. Using steel rule (or straight edge) rest rule on underside of both grab handle screws and mark a line horizontal on the tape at approximately 140mm forward of front grab handle screw as shown in Fig. 1.
5. From front grab handle front screw centre, measure 100mm forward and 3mm up from marked line. Mark this location. This is the mounting plate centre screw hole position.
6. Using mounting plate Item 3 as a template hold plate horizontal with centre hole over marked point. Mark outer holes.
7. Remove pinchweld/door seal adjacent to mounting position and 'B' pillar.
8. Using trim removing tool unclip plastic honey comb behind roof trim and pull down as shown.
9. From grab handle cutout count 2 ribbed sections forward as shown in Fig 3. Cut through honey comb at this location and remove rearward section. (section removed is no longer required) Push remaining honey comb back into position behind trim.
10. Using slender centre punch, punch through soft trim at 3 marked locations each side, punching metal panel approximately 28mm behind. **(Keep centre punch perpendicular to trim when marking metal panel behind)**
11. Repeat on drivers side of vehicle.

MOUNTING POINT LOCATIONS Cont'd

Passenger Side shown

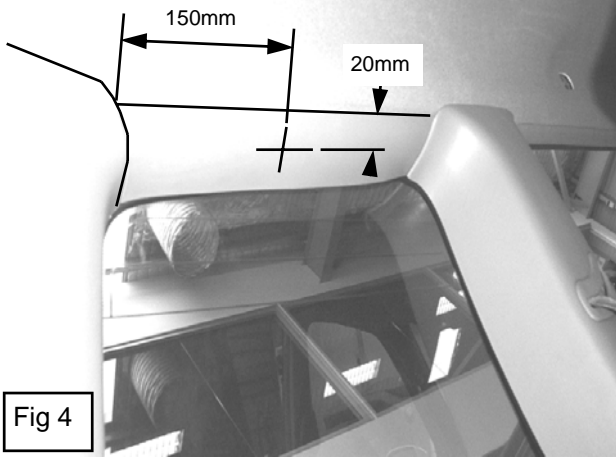


Fig 4

TOP REAR HOLES

1. Locate hard plastic trims above cargo area side windows.
2. Apply masking tape to trim approximately middle of window.
3. From point where hard trim meets rear pillar trim measure 150mm forward as shown in Fig. 4. Mark this location.
4. From inside edge of hard trim measure 20mm towards glass as shown in Fig. 4. Mark this location.
5. Where lines intersect is mounting plate centre hole.
6. Repeat on other side.

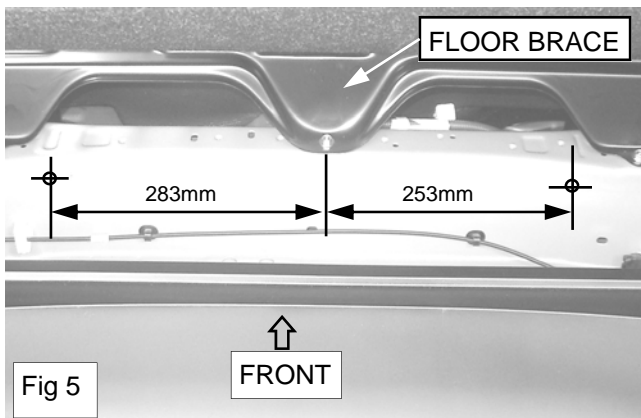


Fig 5

BOTTOM HOLES (Floor mounts)

1. Remove cargo area floor cover and plastic bins under to expose metal floor brace shown in Fig. 5.
2. Measure and mark locations shown in Fig. 5.
3. Using extension strap Item 9 positioned on the underside of the metal floor brace, position hole in strap over marked location on LHS, with the welded nut end of strap flush with top face of metal floor brace as shown in Fig. 7. Mark height through hole in strap.
4. Repeat on RHS using extension strap (Item 10). These locations are the M10 centre holes of mounting plates.
5. Using mounting plate Item 2 as a template hold plate horizontal with centre hole over marked points. Mark outer holes.
6. Centre punch all marked locations.

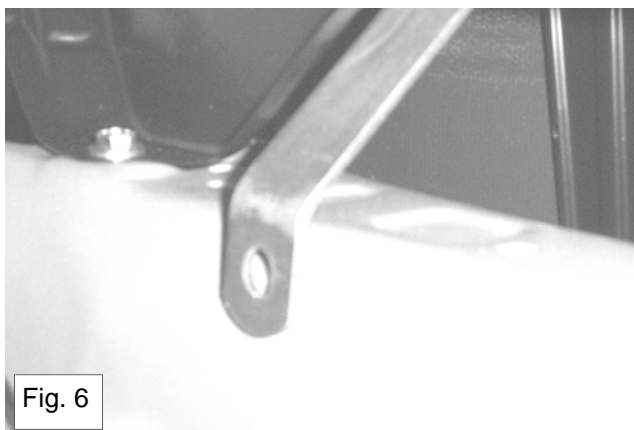


Fig. 6

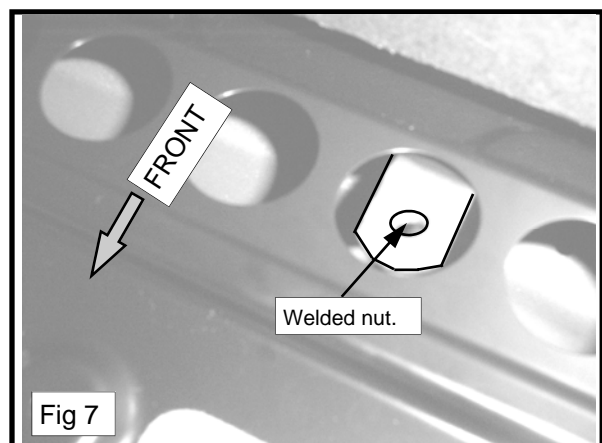


Fig 7

DRILLING PROCEDURE

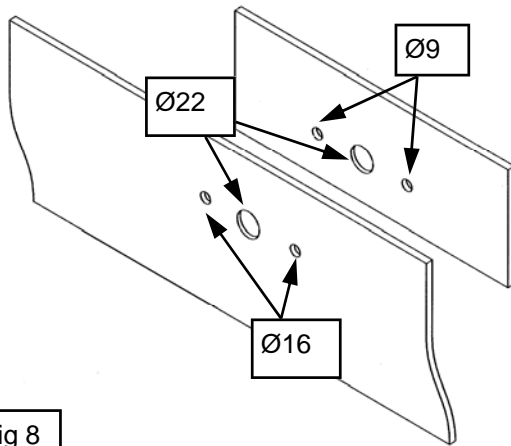


Fig 8

TOP FRONT POSITION HOLES

(If front position required)

1. At 6 locations marked as on page 4 pilot drill all holes through soft trim & metal panel behind using Ø5 drill bit, **with suitable drill stop attached.**
2. Using Ø16 vinyl cutter cut outer holes through soft trim only.
3. Using Ø22 vinyl cutter cut centre holes through soft trim only.
4. Using Ø22 hole saw cut **centre holes only** through metal panel. **Use suitable drill stop.**
5. Drill outer holes to Ø9 through metal panel. **Use suitable drill stop.**
6. Vacuum away all drilling swarf.
7. Apply Tekote sealer (Item 20) to drilled holes in metal panels.

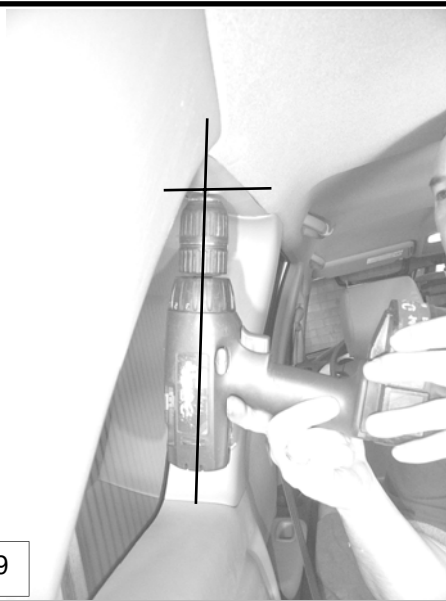


Fig 9

TOP REAR POSITION HOLES

1. At locations marked as per page 5, pilot drill center holes to Ø5mm through plastic trim & metal panel behind. **Drill should be perpendicular to hard plastic trim as shown in Fig. 9**
2. Using Ø22mm Hole Saw drill out centre hole through **plastic trim only.**
3. Remove plastic trim.
4. Using mounting plate Item 3 as a template, position centre hole over pilot hole in roof rail. Mark outer holes through mounting plate. Centre punch outer hole locations. Pilot drill all hole locations Ø5mm.

PLEASE NOTE UNUSUAL DRILLING PROCEDURE FOR TOP REAR MOUNTS ONLY—Refer Fig. 10

5. Using Ø22mm Hole Saw drill out hole **closest to the front of the vehicle only** (Hole saw drill bit should only protrude 5mm past hole saw for this operation to avoid damaging panel behind).
6. Drill the center holes only Ø11mm. **Use suitable drill stop.**
7. Drill the holes closest to the rear of the vehicle Ø9mm. **Use suitable drill stop.**
8. Vacuum away all swarf.
9. Apply Tekote Sealer/Rust Preventative Item 20 to all drilled holes to prevent corrosion.

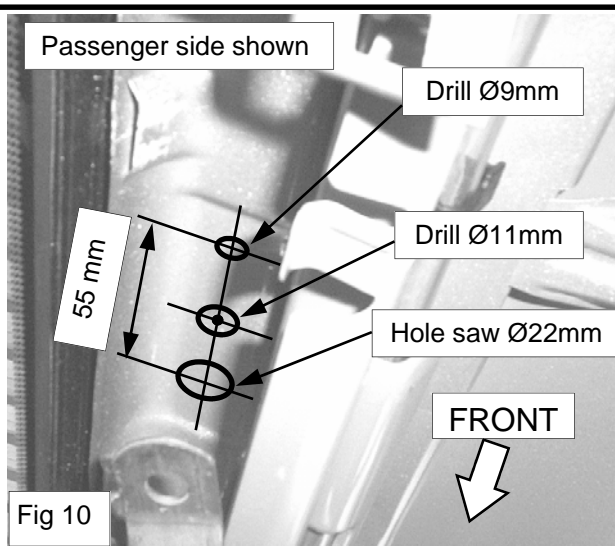


Fig 10

DRILLING PROCEDURE Cont'd

Passenger side shown

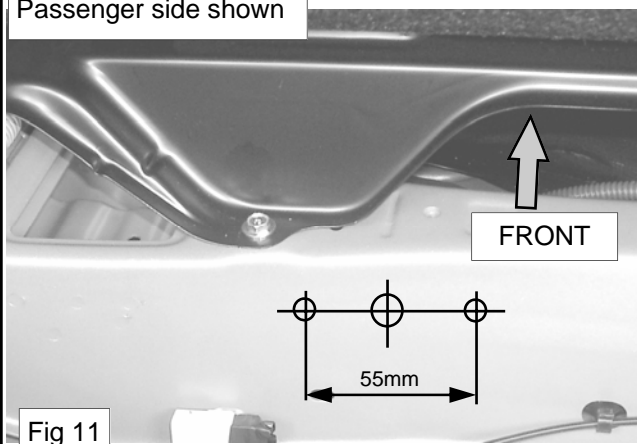


Fig 11

FLOOR MOUNTS

1. Pilot drill all hole locations marked as per page 5, to Ø5mm.
2. Using Ø22mm hole saw drill out centre holes only.
3. Using Ø9mm drill bit drill out outer holes.
4. Vacuum away all swarf.
5. Apply Tekote Sealer/Rust Preventative (Item 20) to all drilled holes to prevent corrosion.

INSTALLATION OF MOUNTS

Fig. 12

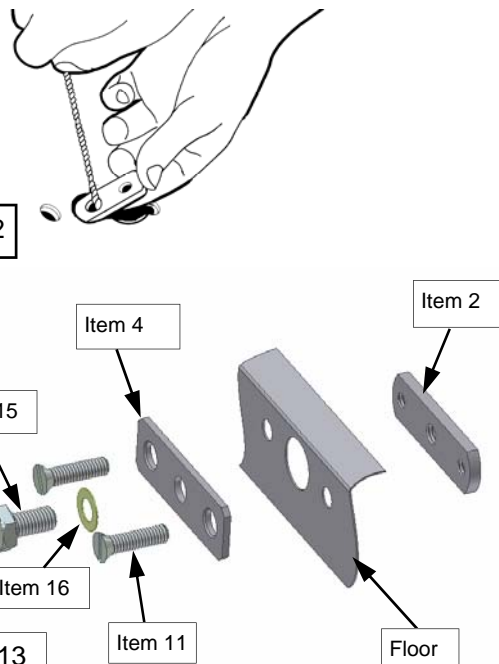


Fig. 13

FLOOR MOUNTS

1. Insert the eye of the installation tool Item 21 through centre M10 hole in mounting plate Item 2.
2. Feed mounting plate through Ø 22mm hole in floor panel as shown in Fig.12. Pull mounting plate into position on underside of floor panel with outer holes aligned.
3. Whilst keeping hold of installation tool slide centre hole of Metal Cover Plate (Item 4) over.
4. With all holes aligned fit 5/16" x 1" Countersink Screws Item 11 to outside holes.
5. Remove installation tool and fit M10 Hex Head Screw Item 15 to centre M10 thread temporarily to align centre holes. Tighten 5/16" screws and remove M10 screws.
6. Reset ends of installation tool and repeat on opposite side of vehicle.

INSTALLATION OF MOUNTS Cont'd

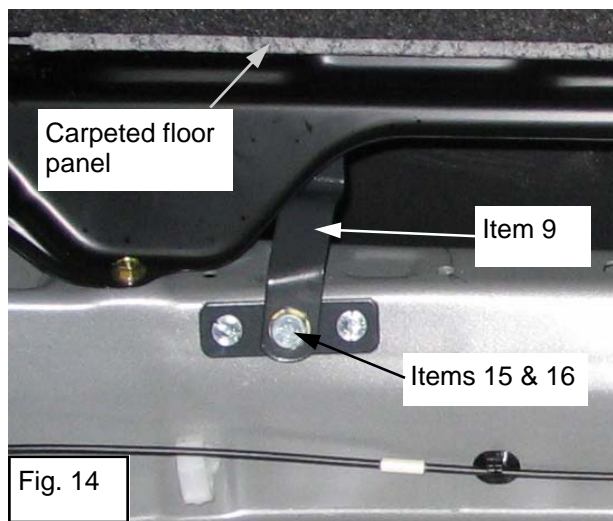


Fig. 14

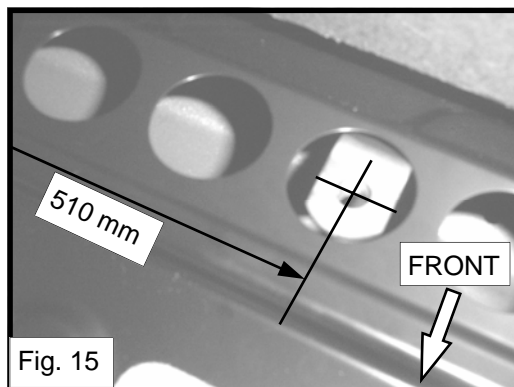


Fig. 15

INSTALLATION OF BOTTOM EXTENSION STRAPS

1. Place Extension Straps Items 9 & 10 in position and secure with M10 Hex Head Screws Item 15 with crinkle washers Item 16 under head as shown in Fig. 14. Lightly tighten.
2. Adjust the Extension Straps so that they sit as close to the centre of the holes in the floor brace as possible and are approximately 510mm apart at the centre of the welded nuts as shown in Fig. 15.
3. Tighten M10 screws fully when in correct position.
4. Refit hinges on cargo area floor panel and clip brace/floor panel back into position.
5. Lift up large floor panel to access underside of floor brace and using a suitable marker, scribe through the M10 welded nut on the Extension straps to mark the centres onto the underside of the small forward brace/floor panel.
6. Un-clip forward brace/floor panel and flip over to expose the centre marks. Put a piece of sheet metal or similar under the small floor panel and drill Ø5mm pilot hole at 2 marked locations.
7. Flip floor panel to normal position and using Ø22mm Vinyl Cutter cut through the carpet at piloted positions.
8. Using Ø22mm Hole Saw drill through the hard backing of the panel to expose the Extension straps M10 nuts when panel is reclipped in place.
9. Vacuum away swarf/dust.
10. Refit plastic cargo containers and cargo floor panels removed earlier.

TOP REAR MOUNTS

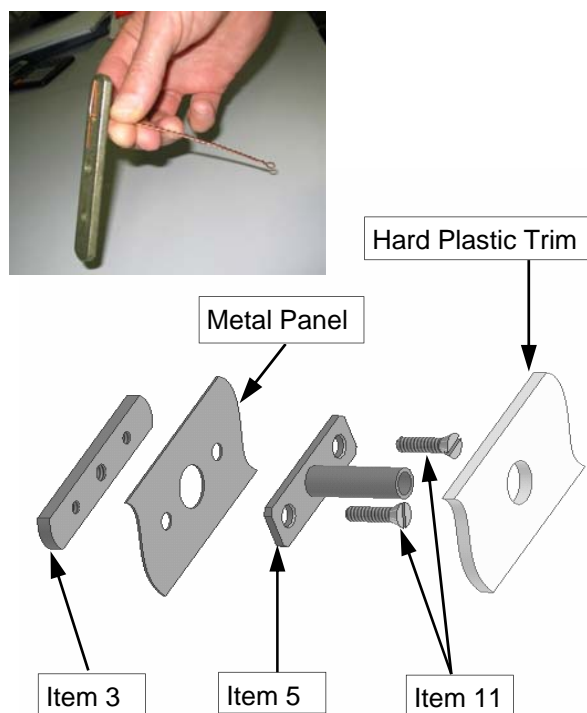


Fig. 16

1. Insert eye of Installation Tool Item 21 through **end 5/16"** hole in mounting plate Item 2. (End of installation tool may need to be reduced in size to fit through 5/16" hole)
2. Insert mounting plate through Ø22mm hole in roof rail.
3. Once mounting plate is inserted align outer holes with those in roof rail.
4. Whilst keeping hold of installation wire, slide end hole of Metal Cover Plate with long spacer tube Item 5 over. Spacer tube must face towards inside of vehicle.
5. With all holes aligned fit 5/16" x 1" Countersink Screw Item 11 to opposite end and temporarily fit Milbolt Item 14 to centre hole.
6. Remove installation tool and fit 5/16" x 1" Countersink Screw Item 11 to outside hole. Tighten 5/16" screws keeping Milbolt central.
7. Remove Milbolt after tightening screws.
8. Re-fit hard plastic trim.
9. Reset ends of installation tool and repeat on opposite side of vehicle.

INSTALLATION OF MOUNTS Cont'd

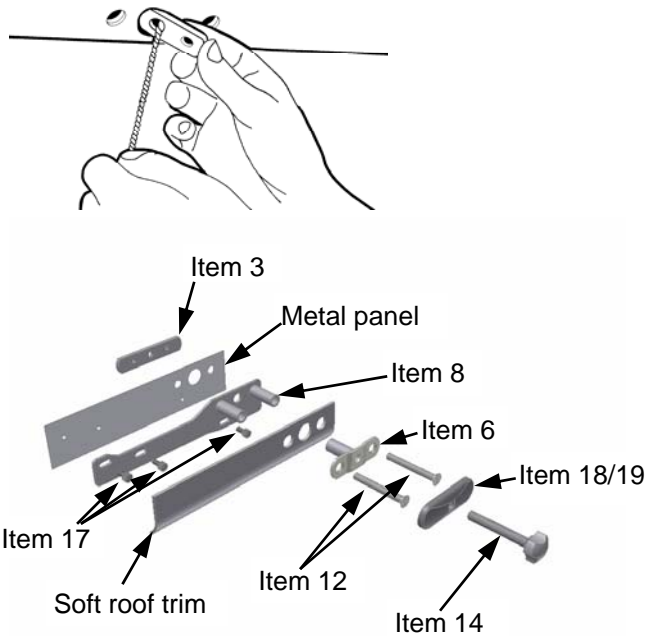


Fig 17

Passenger Side shown

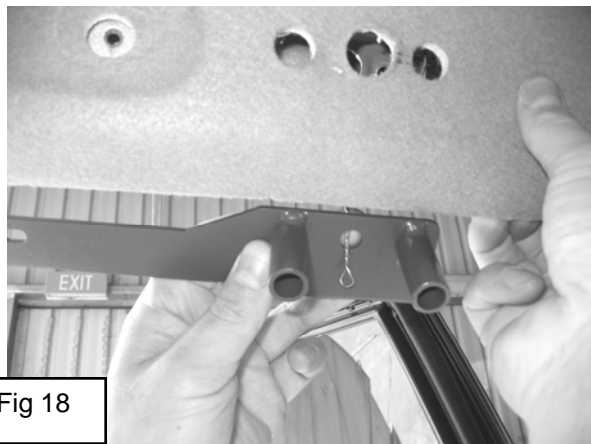
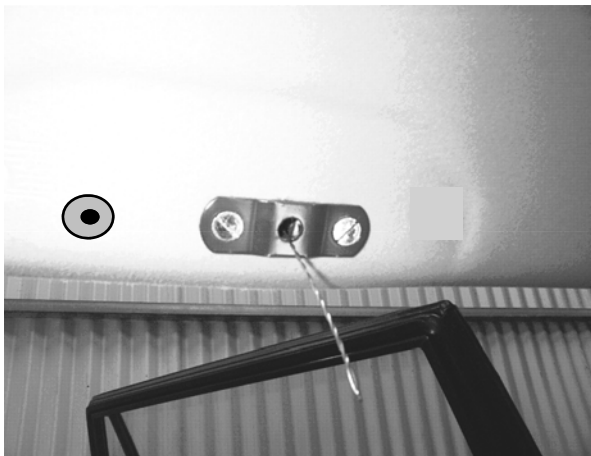


Fig 18



TOP FRONT MOUNTS

1. Slide centre hole of mounting plate Item 3 over installation tool Item 21.
Note: It is advisable to use a new installation tool for each of the top front mounts.
2. From behind soft trim feed mounting plate through Ø22 hole in roof rail as shown.
3. Slide the cover plate assembly Item 8 centre hole over the end of the installation tool Item 21 making sure the spacer tubes are facing inward. Refer Figs. 17/18.
4. Push end of installation tool up through centre hole in soft roof trim.
5. Slide cover plate assembly Item 6 over installation tool with spacer facing outside of vehicle as shown in Fig 17.
6. Whilst holding assembly in position, align all outer holes and fasten with 5/16" x 21/2" CSK Screws Item 12.
7. Before tightening 5/16" screws fit M6 socket head cap screws Item 17 x 3 through slotted holes in cover plate, to captive nuts which exist in roof rails.
8. Remove Installation tool and temporarily fit Milbolt Item 14 to centre M10 hole.
9. Tighten all screws and remove Milbolt.
10. Attach plastic mount covers Items 18 or 19 depending on required barrier position. Item 18 is used to cover mount when position is not occupied by barrier.
11. Re-attach grab handles and replace pinch weld around door opening.
12. Repeat steps 1 to 11 for the other side of vehicle.

INSTALLATION OF CARGO BARRIER

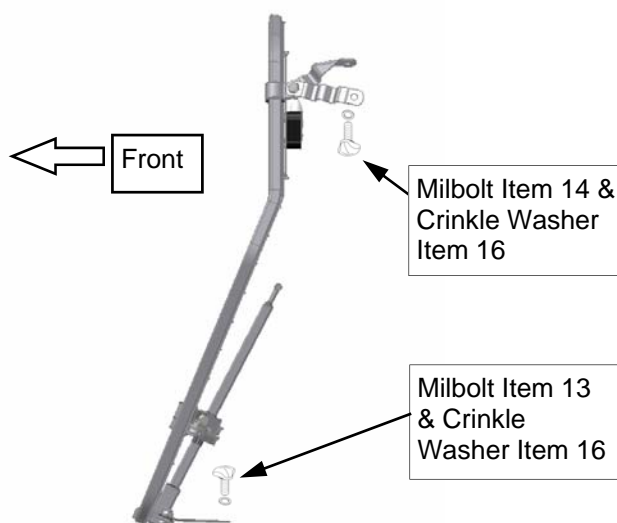


Fig. 20

REAR POSITION

- With the second row of seats in an upright position, stand the cargo barrier assembly Item 1 directly behind seats.
- (Note: Seats cannot be fully reclined in this position)
- The Cargo Barrier rating label must be in the top left hand corner, and facing towards the rear of the vehicle.
- Attach the short top straps to roof mounts using 69mm Milbolts Item 14, with Crinkle washers Item 16 under heads and short bottom straps to floor mounts using 29mm Milbolts Item 13 with Crinkle washers under heads .

FRONT POSITION

- Move both front seats forward on their runners. This will make relocating the barrier to the front position much easier.
- Fold rear seat down as per instructions in owners manual. Please ensure head restraints are fully down.
- Undo Milbolts (If fitted in rear position), fold straps inwards out of way & lay barrier on its back in load area.
- Remove tube support leg from barrier by pulling quick release knob on leg support outwards and sliding leg out of slide tube.
- Insert leg back into bottom of slide tube and lock leg into second hole using quick release pin.
- Move barrier into position behind first row of seats with support leg resting on floor just behind consol.
- Attach longer top straps to front mounts using 69mm Milbolts Item 14 with Crinkle washers Item 16 under heads. (If mount cover plates fitted have no holes in them, they will need to be changed for covers with holes Item 19 supplied in kit)
- Undo Velcro straps holding long front position straps to back of barrier.
- Pull link straps out straight and attach to floor mounts using 29mm Milbolts Item 13 with Crinkle washers Item 16 under heads.
- Reverse procedure to move barrier to rear position.

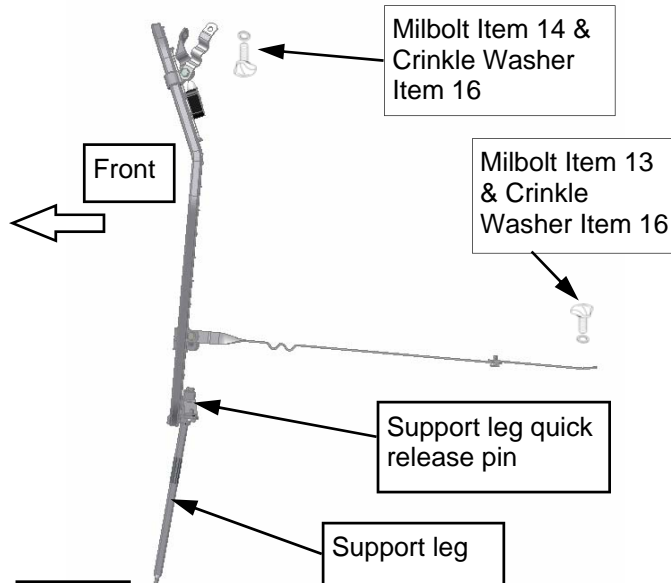


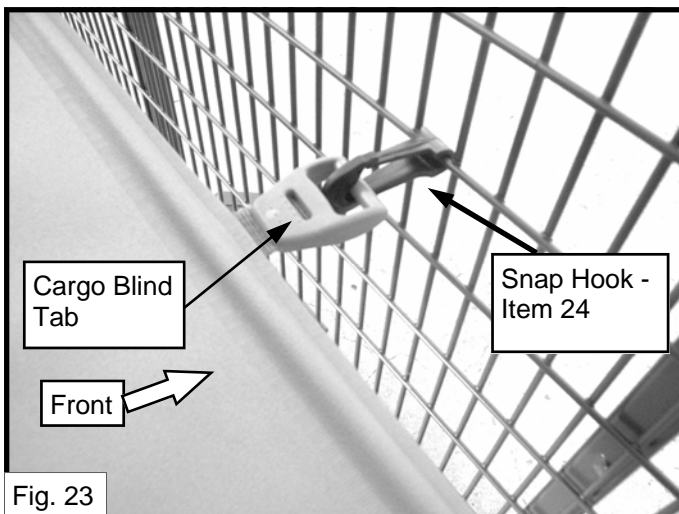
Fig. 21



CHECK THAT ALL BOLTS, NUTS AND SCREWS ARE TIGHT WHEN FITTING COMPLETE

INSTALLATION OF WARNING LABEL

1. Wipe off area at side of dashboard where label is to be affixed with Cleaning Pad Item 23, & allow to dry.
2. Affix Orange warning label Item 22 in location shown. Light pressure should be applied to label to bond glue correctly.

ATTACHING CARGO BLIND SNAP HOOKS
(If cargo blind required)

1. Extend the cargo blind flap towards the cargo barrier and take note of which spaces on the mesh the Cargo Blind Tabs line up with.
2. Place the Snap Hooks Item 24 as shown on Fig. 23 on the mesh, inline with the Cargo Blind Tabs.
3. Open Snap Hooks to attach the Cargo Blind Tabs as shown in Fig. 23.