



MITSUBISHI OUTLANDER ZM CARGO BARRIER USER INSTRUCTION

Part # 306500

VEHICLE YEARS OF MANUFACTURE - FROM 06/2021



This cargo barrier is capable of being located in two positions, behind the 2nd row of seats with the seats in an upright position, and behind the 1st row of seats* with the 2nd row of seats in their folded position. A high degree of technical competence is necessary to correctly install this product. We recommend this cargo barrier be installed by an authorised outlet to ensure the barrier installation complies with AS/NZS 4034 Standard. The cargo barrier is designed, manufactured and fitted to decrease the impact hazard in an accident to occupants from cargo carried within the interior cargo space of the vehicle. In the event of an accident, a cargo barrier can reduce injuries caused by cargo intruding into occupant's space.

***Front position kit P/N 306502 (sold separately) is required to be able to locate the cargo barrier in the behind 1st row seats position.**



Scan the QR code for video instructions on repositioning the cargo barrier.



WARNINGS

- Strict compliance with fitting instructions is essential for this safety product to meet its rated capacity. Refer user instructions regarding correct usage of the cargo barrier.
- Do not modify cargo barrier in any way.
- Do not use this cargo barrier in any other vehicle for which it is not designed.
- Modifications to the cargo barrier or its fixings or use in any other vehicle for which it is not designed may void the load rating and warranty.
- Do not attach the cargo barrier to the vehicle using seat, seat belt or child restraint anchorage's.
- Where high tensile threaded fasteners are used, the cargo barrier must be installed using the size and grade fasteners specified by Milford Industries.
- Do not drill, rivet, adhere or attach objects to the front or rear of the cargo barrier.
- Do not place smaller items, that may bypass the cargo barrier in the event of heavy braking or collision, near the edges of the barrier.
- Position the load against the cargo barrier.
- When load is positioned against cargo barrier, secure the load with a restraint system.
- During a collision moving cargo may damage seat belts or tether straps of a child restraint device, or its anchorage. Load should be carefully positioned so as not to come in contact with these items.
- Do not obstruct seat belts or child restraints, or their operation.
- Long thin items of cargo should be positioned in the vehicle with the long axis across the vehicle to minimise the penetration risk.
- If involved in an accident or accidentally damaged, the cargo barrier should be replaced and the anchorage's repaired to as new condition.
- Clean with soap and water only. Do not use solvents or chemicals. Discard cargo barrier if it becomes rusted. Do not expose to direct sunlight for long periods.
- It is extremely dangerous to ride in the cargo area of the vehicle behind the cargo barrier. It is recommended that the cargo barrier be removed. In a collision people or children riding unrestrained in these areas are more likely to be seriously injured or killed.
- Never leave a child in the vehicle unattended, particularly in the rear cargo area. The cargo area should never be used as a play area for children.
- The cargo barrier may deform and significantly intrude into occupant's space in an accident.
- Remember that the tailgate cannot be opened from inside the cargo area.
- The fixed labeling should not be removed from the cargo barrier.
- Failure to comply with warning notes may prevent the barrier protecting the occupants.
- Parents should explain to children how and when to use **EMERGENCY ESCAPE HAMMER** attached to cargo barrier.
- Do not remove the rating plaque from the cargo barrier.

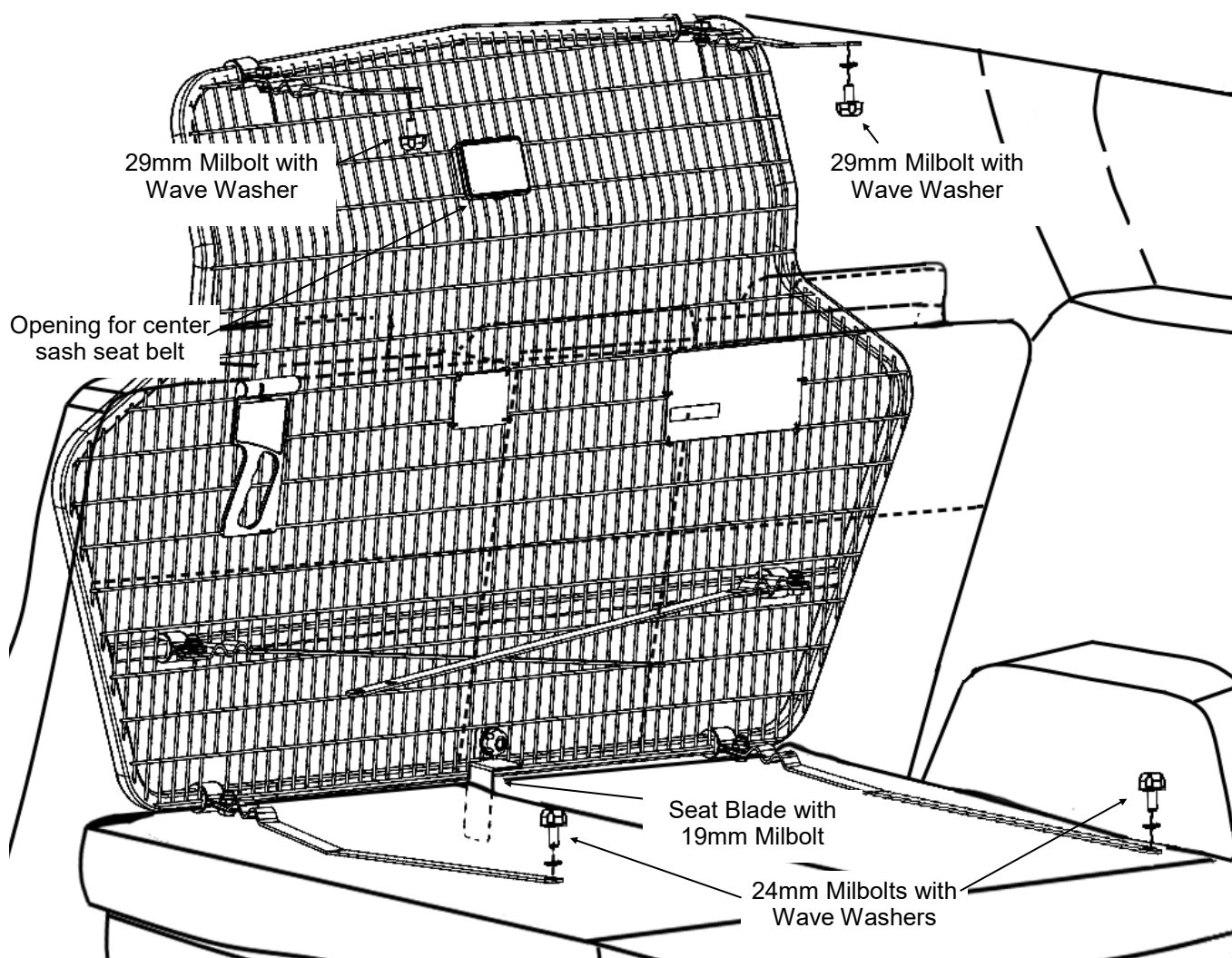
NOTICE TO INSTALLERS & DISTRIBUTORS

Please ensure User Instructions are left with vehicle owner after installation.



INSTALLATION OF CARGO BARRIER 'Behind 2nd row of seats'

1. Remove the cargo blind if installed.
2. Fold the 3rd row seats forward to create flat floor.
3. Fold the 2nd row seats forward to allow space to manoeuvre the cargo barrier into position.
4. Ensure all straps are pivoted towards the meshed side of the cargo barrier.
5. Manoeuvre the cargo barrier into the vehicle with the rating label (meshed side of the cargo barrier) facing the rear of the vehicle. Locate the cargo barrier behind the 2nd row seat position.
6. Attach the top straps to the roof mounts using 29mm Milbolts with wave washers under the heads.
7. Attach the bottom straps to the bottom mounts using 24mm Milbolts with wave washers under the heads.
8. Attach seatblade to cargo barrier mesh and slot between third row seatbacks. Attach using 19mm Milbolt. (see page 4).
9. Tighten all Milbolts.
10. Replace the cargo blind if required.
11. Put 2nd row seats back into upright position.



IMPORTANT NOTE: Check that all bolts and screws are tight and re check periodically.

MITSUBISHI OUTLANDER ZM CARGO BARRIER USER INSTRUCTION

Part # 306500

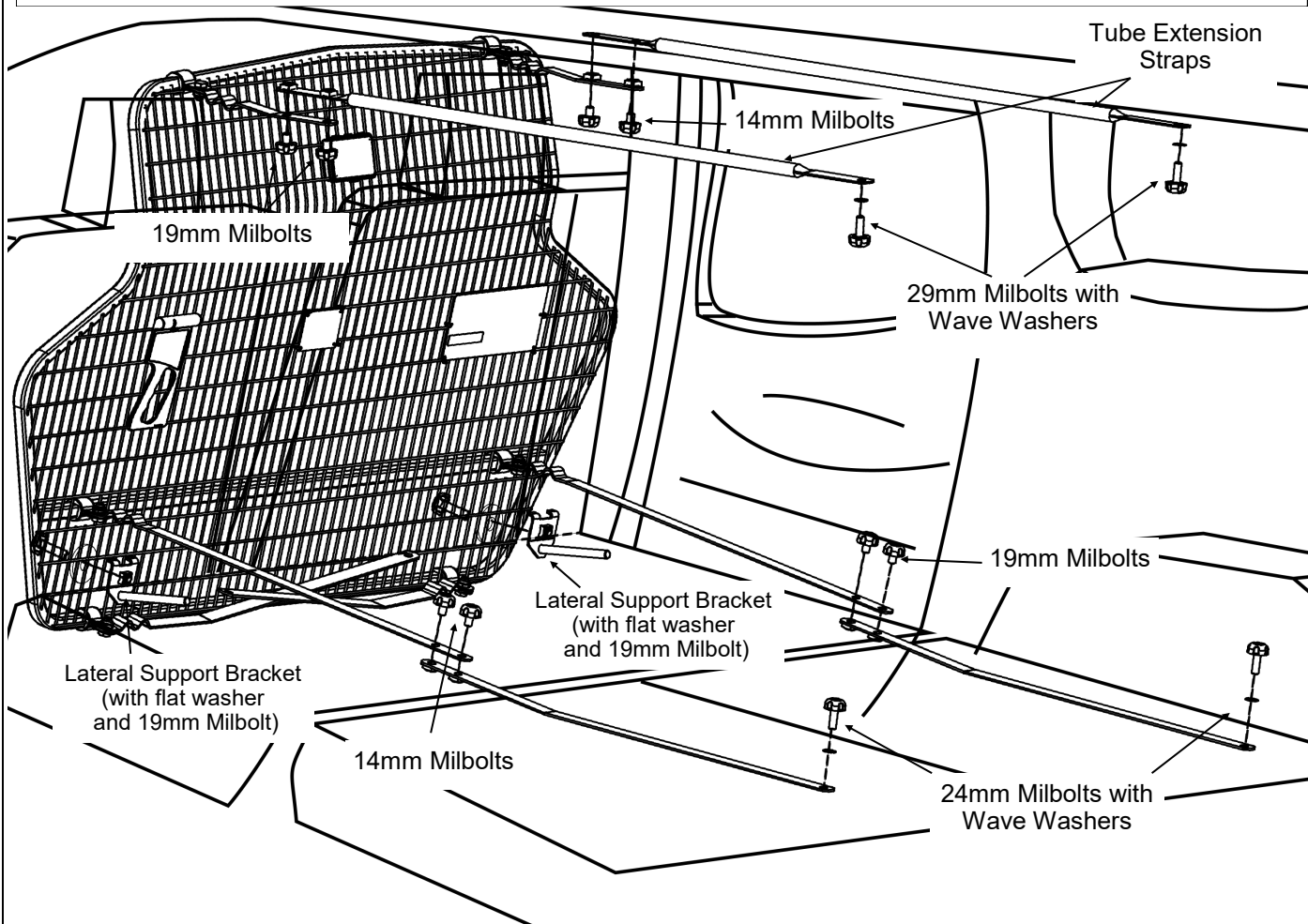
VEHICLE YEARS OF MANUFACTURE - FROM 06/2021



INSTALLATION OF CARGO BARRIER 'Behind 1st row of seats'

(Requires the front position kit 306502 (sold separately) to have been installed)

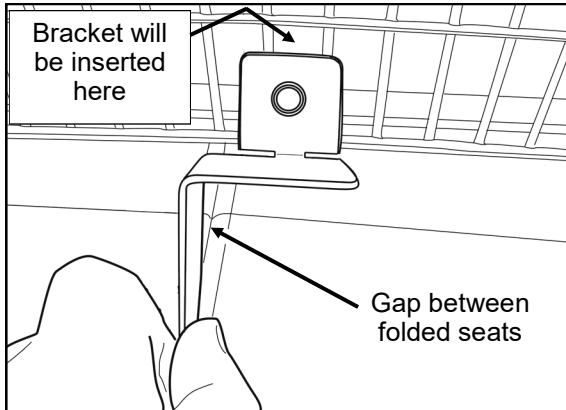
1. Remove the cargo blind if installed.
2. Remove the headrests from the 2nd row seats.
3. Fold the 2nd row seats forwards.
4. Place the lateral support headrest attachments in the outside headrest holes for the outer headrests on the 2nd row seats as shown.
5. Lay the cargo barrier on its back in the cargo area.
6. If attached, ensure rear position bottom straps are pivoted towards the center of the cargo barrier.
7. Position the cargo barrier in place behind the 1st row seats.
8. Pivot front position bottom straps away from the barrier. Attach front position bottom extension straps to front position bottom straps using 14mm Milbolts (2 per strap) as shown.
9. Secure the extended bottom straps to the bottom mounts using 24mm Milbolts with wave washers under the heads.
10. Attach the tube extension straps to the top straps using 14mm Milbolts (2 per strap) as shown.
11. Attach the free end of the top tube extension straps to the roof mounts using 29mm Milbolts with wave washers under the heads.
12. Centre the cargo barrier in the vehicle (even gap each side).
13. Attach the lateral support headrest attachments to the cargo barrier mesh using 19mm Milbolts with flat washers under the heads.
14. Tighten all Milbolts.



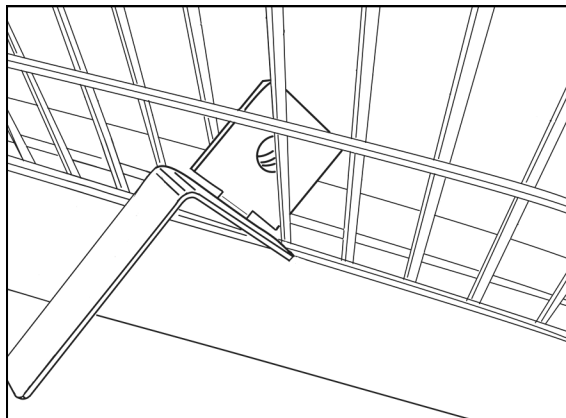
IMPORTANT NOTE: Check that all bolts and screws are tight and re check periodically.



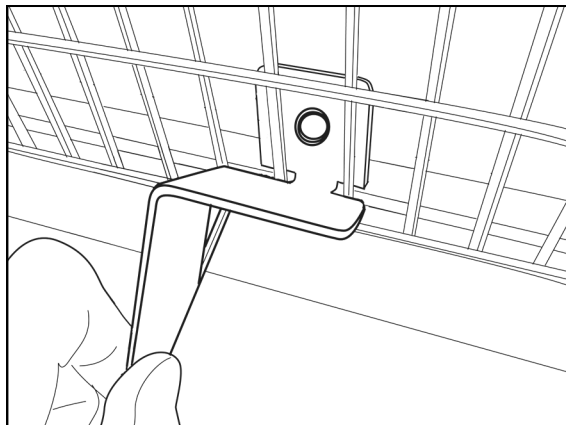
INSTALLATION OF LATERAL SUPPORT BRACKET



1. Centre cargo barrier in the middle of the vehicle. (Even gap each side)
2. Locate best mesh aperture opening along bottom of cargo barrier for lateral support bracket. (Bracket will locate in gap between folded seat backs)



3. Manoeuvre lateral support bracket into position through mesh aperture selected.



4. With lateral support bracket positioned in gap between folded seat backs, secure in position using 19mm Milbolt with flat washer under head.

