



**SUBARU WRX SPORTSWAGON**  
**CARGO BARRIER 'FRONT POSITION KIT'**  
**INSTALLATION INSTRUCTION - Part # 705177**  
 VEHICLE YEARS OF MANUFACTURE - FROM MARCH 2022



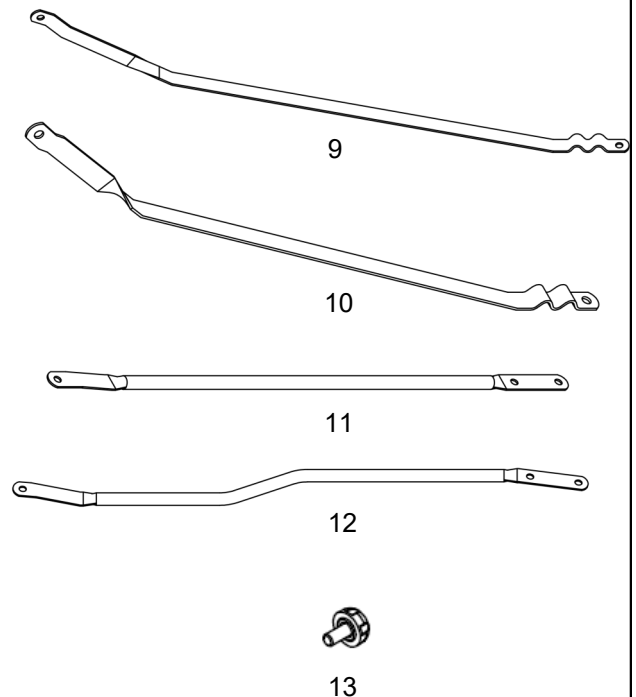
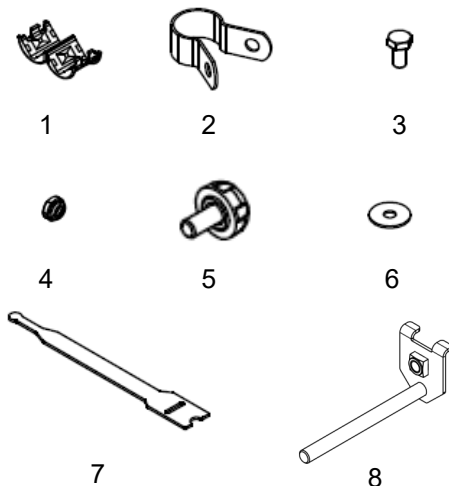
**Use this kit with Cargo Barrier part number 705175 only.**  
**Kit will enable the barrier to be installed in the behind 1st row seats position.**

**Installation time approximately 15 Mins.**

"The estimated fitting time is based on an experienced fitter conversant with the fitment procedure"

### Parts List

Item	Component Name	Part No.	Qty
1	Bush - Pivot Saddle	752684	2
2	Pivot Saddle	752700	2
3	Bolt - Hex Head, M10 x 1.5 x 20mm ZP	912205	2
4	Nut - Hex, Nyloc, M10 x 1.5 ZP	922090	2
5	Milbolt - M10 x 1.5 x 19mm	912820	2
6	Flat Washer - 10mm ZP	932005	2
7	Velcro Tie	904003	4
8	Lateral Support Headrest Bracket	753830	2
9	Front Position Bottom Strap LHS	771991	1
10	Front Position Bottom Strap RHS	771982	1
11	Top Tube Extension Strap LHS	774374	1
12	Top Tube Extension Strap RHS	774368	1
13	Milbolt - M10 x 14mm	912816	4



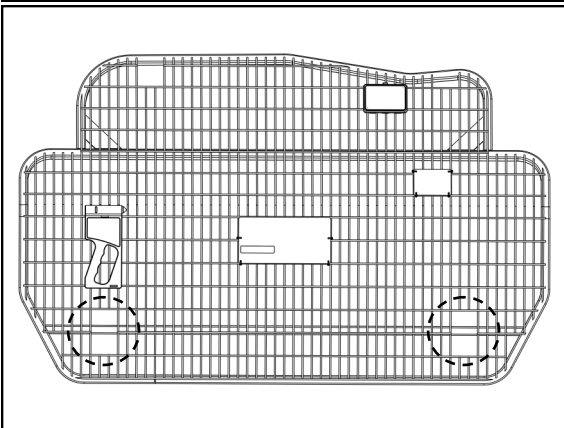
### TOOLS REQUIRED

- Socket Wrench
- 17mm A/F Hex Socket
- 16mm A/F Spanner

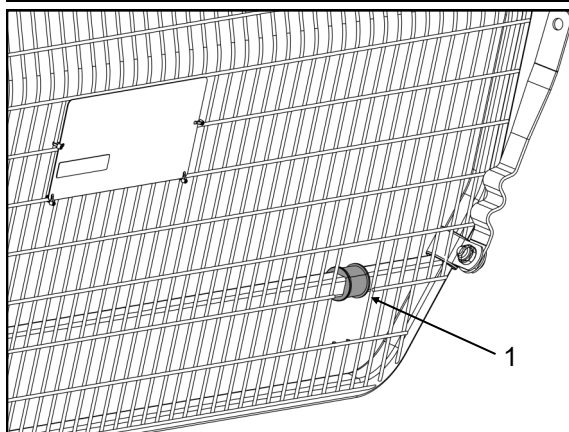
***E and OE—Errors and Omissions Excepted***



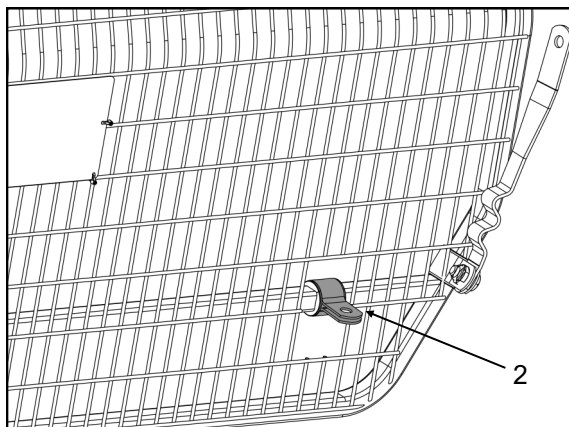
## SECURING STRAPS TO CARGO BARRIER



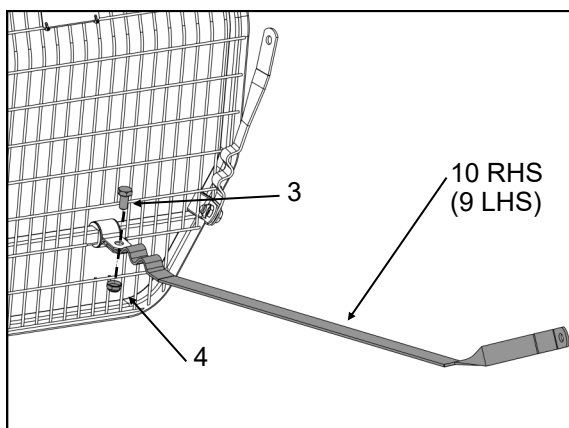
1. Locate the open apertures in the cargo barrier mesh at the bottom of the cargo barrier.



2. Place a saddle bush (1) over the cargo barrier frame as shown.



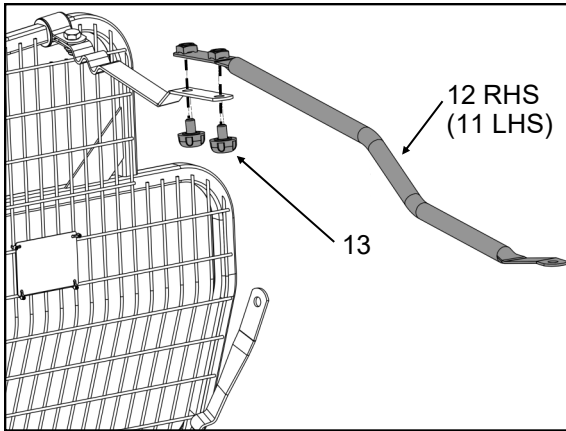
3. Place a pivot saddle (2) over the saddle bush then push the ends together.



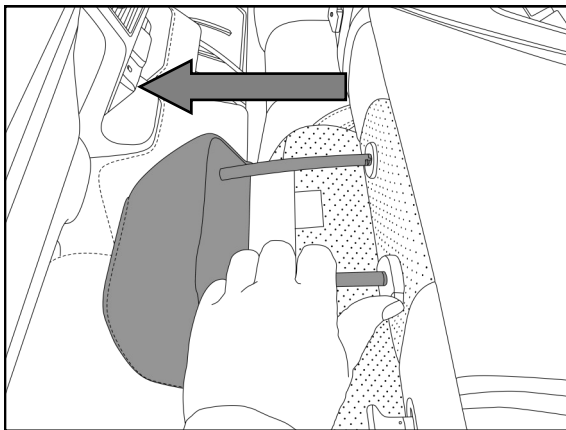
4. Place a bottom front position strap (6) in between the saddle as shown then secure with an M10 bolt and nut (3 & 4).
5. Tighten the nut and bolt until the strap is firm in the saddle but can still be pivoted.
6. Repeat the above on the other side.
7. Pivot the long bottom straps across the meshed side of the cargo barrier then secure using Velcro ties (7).



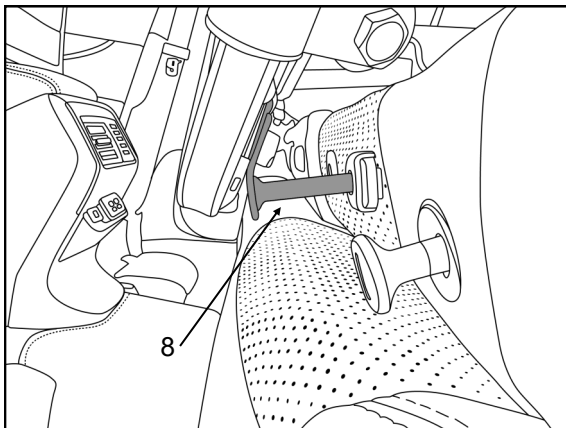
## SECURING STRAPS & SUPPORT BRACKETS TO CARGO BARRIER



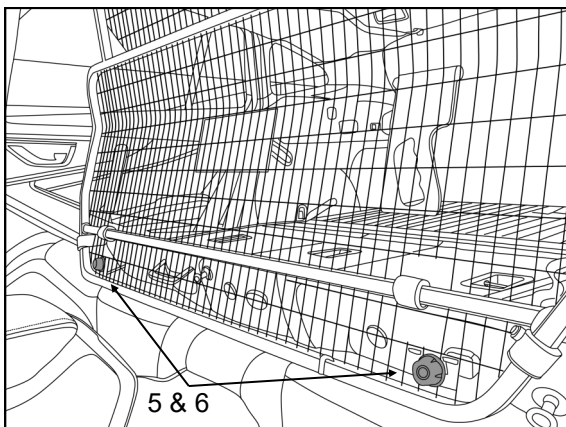
8. Fasten top tube straps to the barrier top straps as shown using 14mm Milbolts (13) (two per strap).



9. Remove headrests from the second row of seats and store in a safe location.



10. Insert the lateral support headrest brackets (8) into the inner headrest holes on both side of the seats.



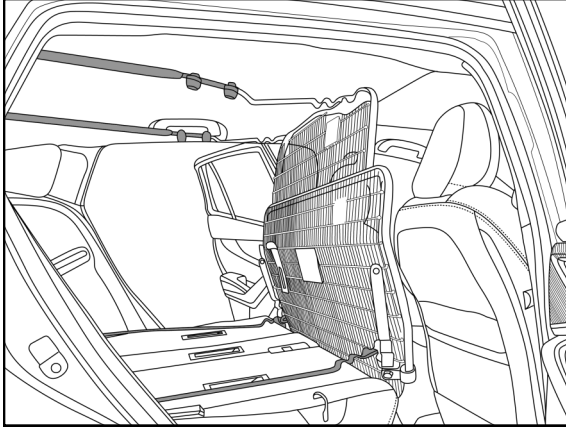
11. Support the cargo barrier mesh on the lateral support headrest brackets and fasten the mesh to the brackets using 19mm Milbolts (5) with 10mm flat washers (6) underneath the heads.



**SUBARU WRX SPORTSWAGON**  
**CARGO BARRIER 'FRONT POSITION KIT'**  
**INSTALLATION INSTRUCTION - Part # 705177**  
VEHICLE YEARS OF MANUFACTURE - FROM MARCH 2022



**INSTALLING CARGO BARRIER IN FRONT POSITION**



12. Fasten the Top Tube Extension Straps (11 & 12) to the vehicle top mounts.
13. Fasten the Front Position Bottom Straps (9 & 10) to the vehicle bottom mounts.