



SUZUKI GRAND VITARA 5 DOOR CARGO BARRIER INSTALLATION INSTRUCTION

Part # 708425

VEHICLE YEARS OF MANUFACTURE - FROM AUG. 2008



This cargo barrier is capable of being located in two positions, behind the 2nd row of seats with the seats in an upright position, and behind the 2nd row of seats in their fully forward folded position. The installation kit contains sufficient components for fitment to both locations. A high degree of technical competence is necessary to correctly install this product.

We recommend this cargo barrier be installed by an authorised outlet to ensure the barrier installation complies with AS/NZS 4034 Standard.

The cargo barrier is designed, manufactured and fitted to decrease the impact hazard in an accident to occupants from cargo carried within the interior cargo space of the vehicle. In the event of an accident, a cargo barrier can reduce injuries caused by cargo intruding into occupant's space.

Installation time approximately 1.5 Hours



WARNINGS

- Strict compliance with fitting instructions is essential for this safety product to meet its rated capacity. Refer user instructions regarding correct usage of the cargo barrier.
- Do not modify cargo barrier in any way.
- Do not use this cargo barrier in any other vehicle for which it is not designed.
- Modifications to the cargo barrier or its fixings or use in any other vehicle for which it is not designed may void the load rating and warranty.
- Do not attach the cargo barrier to the vehicle using seat, seat belt or child restraint anchorage's.
- Where high tensile threaded fasteners are used, the cargo barrier must be installed using the size and grade fasteners specified by Milford Industries.
- Do not drill, rivet, adhere or attach objects to the front or rear of the cargo barrier.
- Do not place smaller items, that may bypass the cargo barrier in the event of heavy braking or collision, near the edges of the barrier.
- Position the load against the cargo barrier.
- When load is positioned against cargo barrier, secure the load with a restraint system.
- During a collision moving cargo may damage seat belts or tether straps of a child restraint device, or its anchorage. Load should be carefully positioned so as not to come in contact with these items.
- Do not obstruct seat belts or child restraints, or their operation.
- Long thin items of cargo should be positioned in the vehicle with the long axis across the vehicle to minimise the penetration risk.
- If involved in an accident or accidentally damaged, the cargo barrier should be replaced and the anchorage's repaired to as new condition.
- Clean with soap and water only. Do not use solvents or chemicals. Discard cargo barrier if it becomes rusted. Do not expose to direct sunlight for long periods.
- It is extremely dangerous to ride in the cargo area of the vehicle behind the cargo barrier. It is recommended that the cargo barrier be removed. In a collision people or children riding unrestrained in these areas are more likely to be seriously injured or killed.
- Never leave a child in the vehicle unattended, particularly in the rear cargo area. The cargo area should never be used as a play area for children.
- The cargo barrier may deform and significantly intrude into occupant's space in an accident.
- Remember that the tailgate cannot be opened from inside the cargo area.
- The fixed labeling should not be removed from the cargo barrier.
- Failure to comply with warning notes may prevent the barrier protecting the occupants.
- Parents should explain to children how and when to use **EMERGENCY ESCAPE HAMMER** attached to cargo barrier.
- Do not remove the rating plaque from the cargo barrier.

NOTICE TO INSTALLERS & DISTRIBUTORS

Please ensure User Instructions are left with vehicle owner after installation.

SUZUKI GRAND VITARA 5 DOOR CARGO BARRIER INSTALLATION INSTRUCTION

Part # 708425

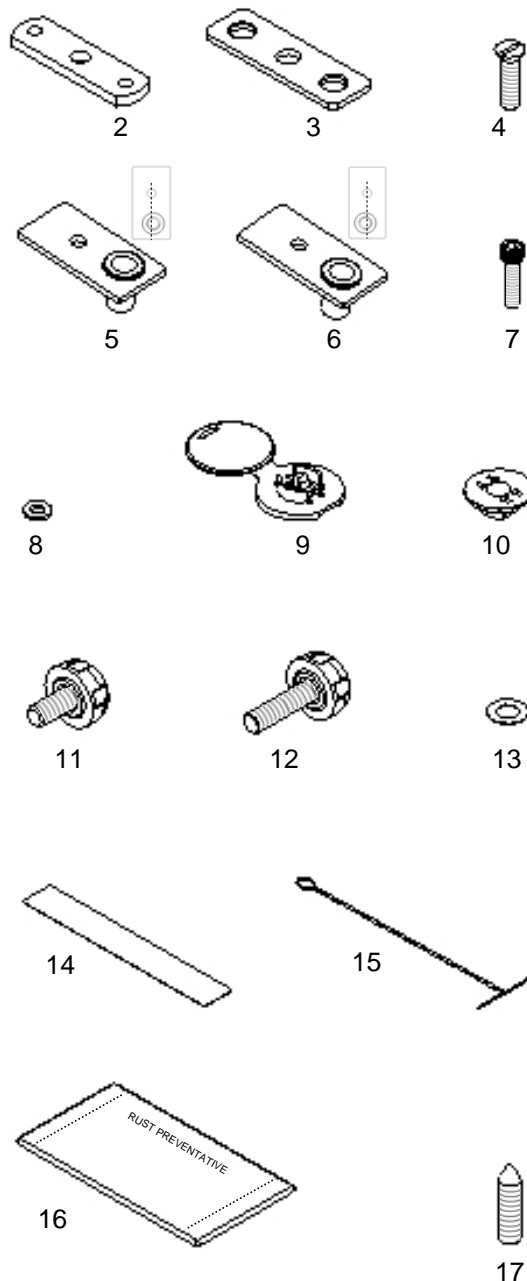
VEHICLE YEARS OF MANUFACTURE - FROM AUG. 2008



IMPORTANT: The installation kit contains sufficient components to fit the cargo barrier. A high degree of technical competence is necessary to correctly install this product. We recommend this cargo barrier be installed by an authorised outlet to ensure the barrier installation is correct. These instructions must be read and clearly understood before commencing installation. Check contents of kit before commencing fitment and report any discrepancies or damage.

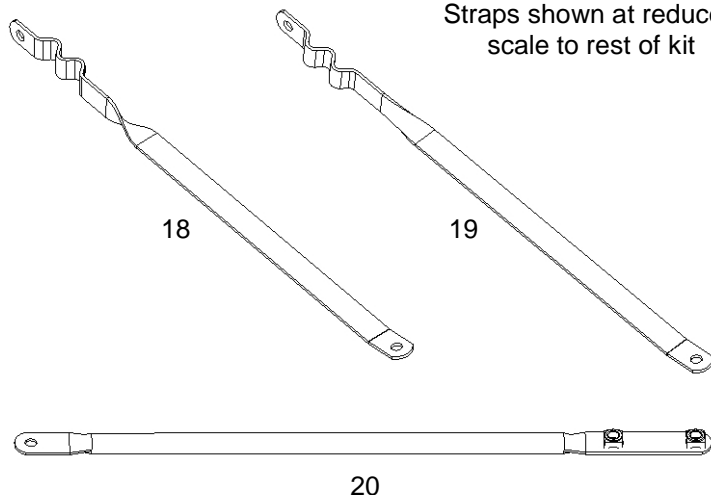
Parts List

Item	Component Name	Part No.	Qty
1	Cargo Barrier ASM (not shown)	708425	1
2	Mounting Plate—ZP	754000	2
3	Cover Plate—Powder Coated	754235	2
4	Screw—5/16" BSW x 1" CSK	912000	4
5	Bracket ASM—Roof Mount L/H	756875	1
6	Bracket ASM—Roof Mount R/H	756874	1
7	Screw— M6 x 25 Cap Head—ZP	711419	2
8	Washer— Spring 6mm	932060	2
9	Trim Garnish—Base & Lid	753075	2
10	Garnish Spacer	753077	2
11	Milbolt—M10 x 1.5 x 19mm	912820	8
12	Milbolt—M10 x 1.5 x 39mm	912840	2
13	Wave Washer—10mm	932125	6
14	Label—Warning (Orange)	905017	1
15	Installation Tool	754200	1
16	Rust Preventative Sealer (Sachet)	906300	1
17	Marking Pin—M10 x 40	906186	2
18	Strap— Front Position Bottom LH	776531	1
19	Strap— Front Position Bottom RH	776530	1
20	Tube Strap— Front Position Top	776529	2



Note: Head style of CSK screws (Item 4) may vary from that shown.

Straps shown at reduced scale to rest of kit



SUZUKI GRAND VITARA 5 DOOR CARGO BARRIER INSTALLATION INSTRUCTION

Part # 708425

VEHICLE YEARS OF MANUFACTURE - FROM AUG. 2008



ADVICE TO FITTER

Note: To fit the cargo barrier the following is essential:

- ☐ Always drill perpendicular to surface (Unless stated otherwise).
- ☐ A positive drill stop should always be used to prevent accidental damage to external panels, fuel lines etc.
- ☐ Ensure Safety Eye Protection and Gloves are worn as required when using cutting tools.
- ☐ When cutting metal panels be very careful of sharp edges, for risk of skin cuts etc.
- ☐ Care should be taken when applying Rust Preventative sealer to all holes drilled, to negate the possibility of skin and eye irritation.
- ☐ Check screws in relevant components by hand before installation. Should there be resistance re-tap threads and re-check.
- ☐ **Before marking or drilling to install this cargo barrier, check vehicle for LPG conversion & non standard fuel tanks. Locate tanks and all lines attached and take EXTREME CARE not to damage whilst installing this cargo barrier.**
- ☐ **Before drilling to install this cargo barrier, check for concealed wiring looms. E.g. tow bar, reversing camera, reversing sensor wiring etc.. Relocate before drilling to avoid damage.**

**CARE SHOULD BE TAKEN NOT TO CROSS THREAD THE FASTENERS DURING
INSTALLATION OF COMPONENTS TO THE VEHICLE.**

TOOLS REQUIRED

Metric spanners
Trim removal tools
Tape Measure
Hammer
Screwdriver—Large Flat Blade
Screwdriver—#4 Phillips
Power Drill
Masking Tape
Markers—Black & White
Centre Punch
5mm, 9mm, Drill Bits

Drill stop's
22mm Hole Saw
16mm, 20mm Vinyl Cutters
Hole De-Burring Tool
Magnetic Pickup Tool
Rust Preventative Applicator eg. Cotton bud
Vacuum Cleaner
Cover sheet / Drop sheet
Screwdriver—Small Flat Blade
Hex Key—5mm A/F



MARKING PROCEDURE FOR FLOOR MOUNTS



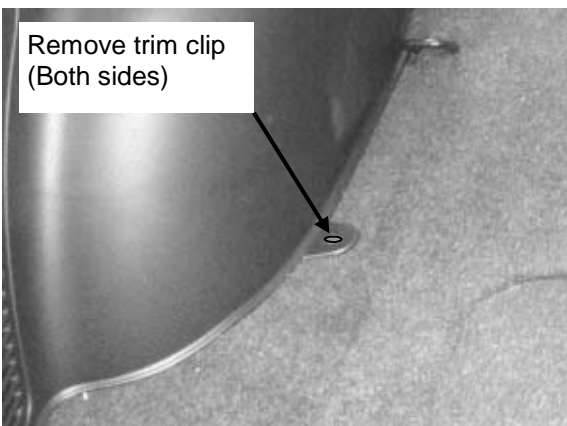
1. Identify area which you will be working in.
(Second row seats shown folded forward in picture)



2. Remove cargo area floor hold lid.



3. Remove the 2 clips on front face, securing hard trim at bottom of tailgate opening, then unclip trim by pulling upwards.



Remove trim clip
(Both sides)

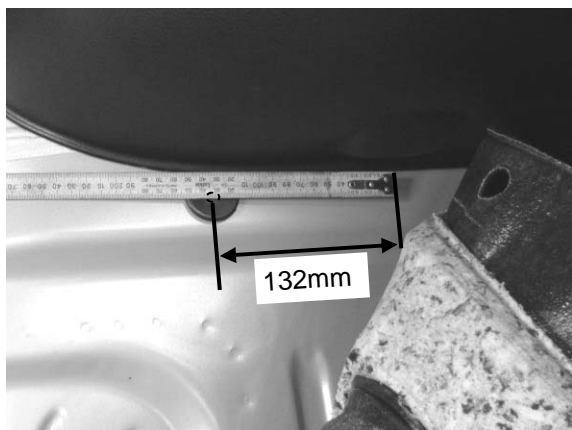
4. Remove trim clips securing bottom of hard side trims in place.



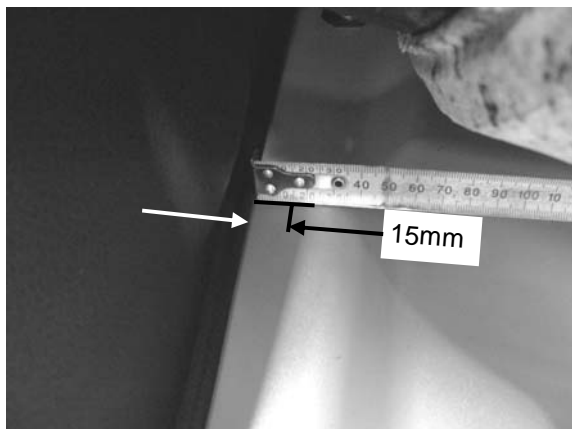
MARKING PROCEDURE FOR FLOOR MOUNTS—Cont'd



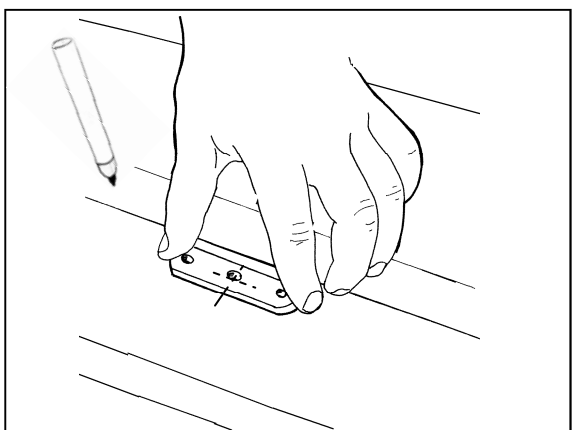
5. Lift cargo area floor covering out of the way to expose metal floor under as shown.



6. From the centre of the side trim, trim clip hole in metal panel measure forward 132mm as shown. Mark this location on floor panel.
7. Repeat on other side.



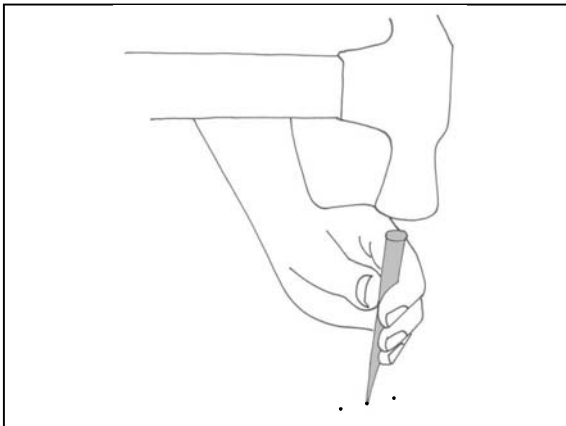
8. At location marked in step 6 measure from the side trim inboard 15mm as shown. Mark this location on floor panel. The intersection of the 2 lines will be the centre mounting hole of floor mounting plates.
9. Repeat on other side.



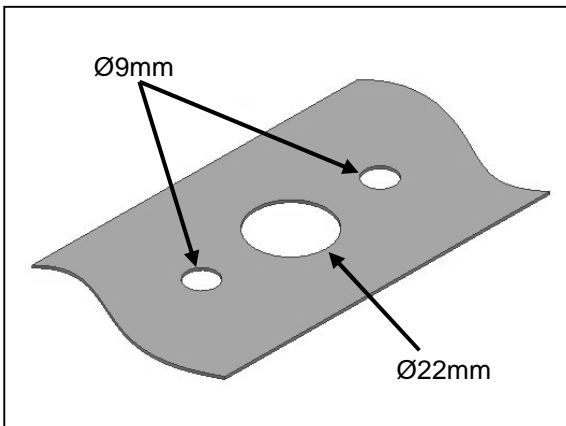
10. Using mounting plate (Item 2) as a template position centre hole over marked location from step 8, with plate parallel to side trim. Using marker pen mark the outer holes onto metal panel.
11. Repeat on other side.



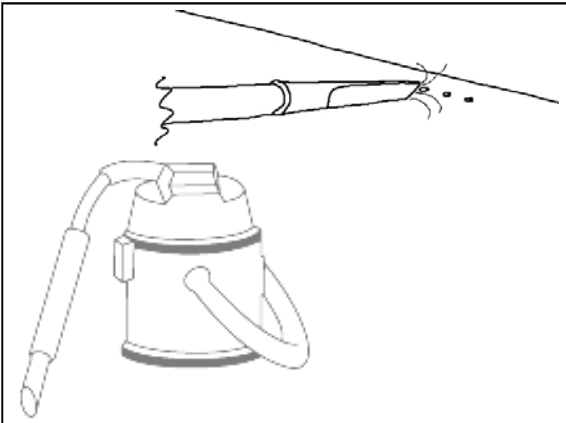
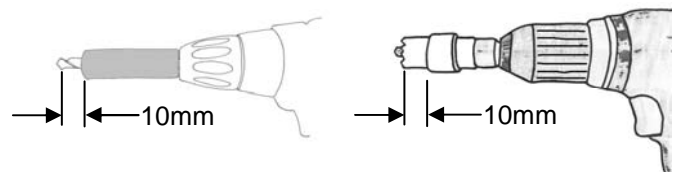
DRILLING PROCEDURE FOR FLOOR MOUNTS



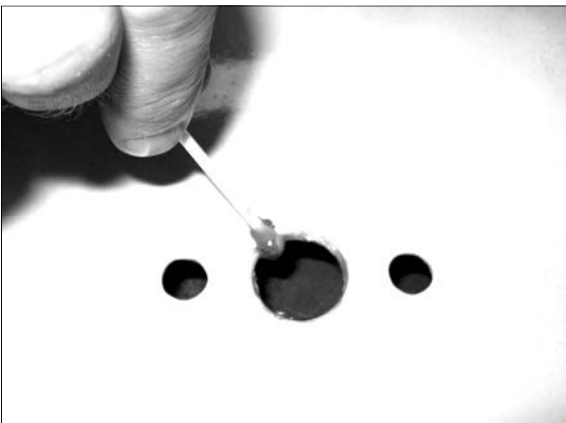
12. Centre punch the 6 floor mount hole locations.



13. Using Ø5mm drill bit with drill stop attached, pilot drill the 6 floor mount holes centre punched at step 12.
14. Using Ø9mm drill bit with drill stop attached enlarge the **outer holes** only.
15. Using Ø22mm hole saw with drill stop attached enlarge the **centre holes** only.



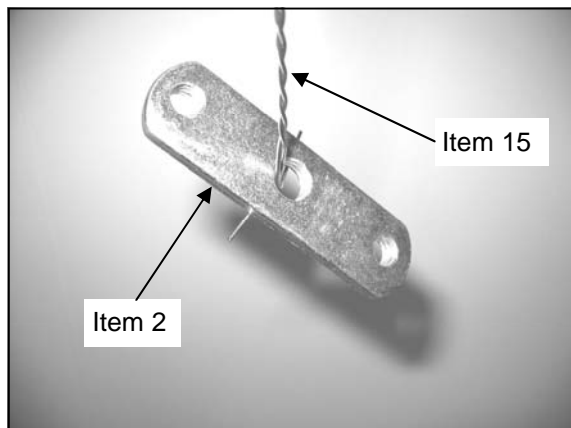
16. Vacuum away all drilling swarf.



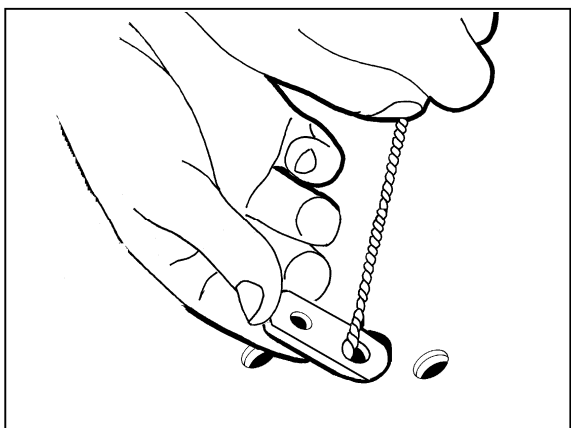
17. Apply rust preventative sealer (Item 16) to all drilled holes using suitable applicator. (ie. Cotton bud)



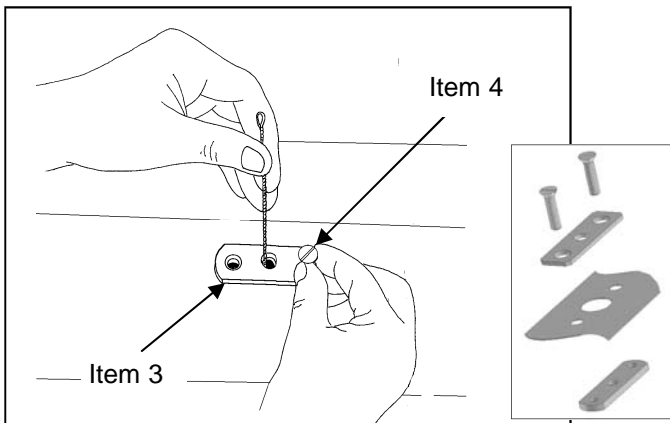
INSTALLATION PROCEDURE FOR FLOOR MOUNTS



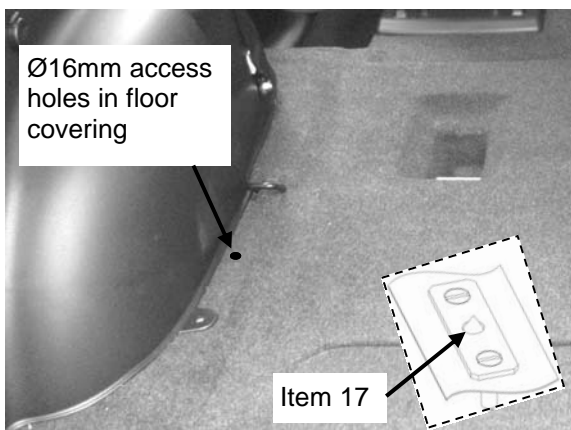
18. Place mounting plate (Item 2) centre hole over installation tool (Item 15).



19. Insert mounting plate through Ø22mm centre hole as shown, whilst keeping hold of the installation tool. Once the mounting plate is behind the floor panel align the outer holes with outer holes in floor panel.



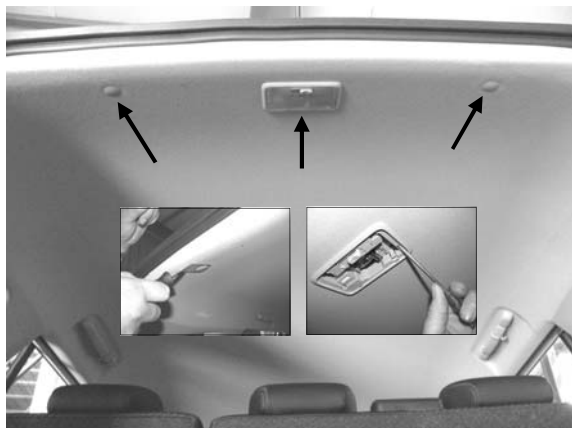
20. Place cover plate (Item 3) centre hole over installation tool as shown. Secure assembly in place using countersunk screws (Item 4) in the outer holes. Once screws are started remove installation tool by pulling upwards.
21. Temporarily insert Milbolt (Item 11) into centre hole then tighten outer screws.
22. Reset installation tool ends then repeat on other side.



23. Screw marking pins (Item 17) into centre (M10) holes of floor mounting plates. (Just the points should be protruding)
24. Reposition floor covering back into its home location.
25. At location of marking pins carefully apply pressure to floor covering until marking pin protrudes through covering. Mark these locations with a white marker.
26. Lift floor covering & remove marking pins.
27. Using Ø16mm vinyl cutter, cut a hole through the floor covering at each of the marked locations.
28. Reposition floor covering and replace all trim, clips etc.



INSTALLATION PROCEDURE FOR UPPER MOUNTS



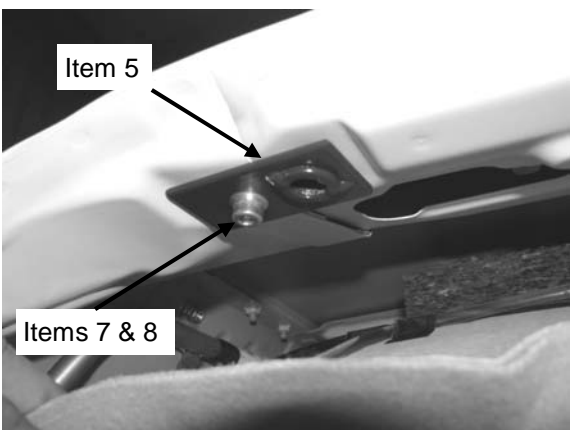
29. Using a suitable trim clip removal tool, remove the 2 clips securing the roof lining in place just forward of the tailgate opening.
30. Remove the rear centre roof light cover then unclip light from roof. (Leave wiring connected)



31. Remove the rubber tailgate seal from across top edge & about 200mm down each side.
32. Carefully unclip the top back corners of hard plastic 1/4 trims as shown.



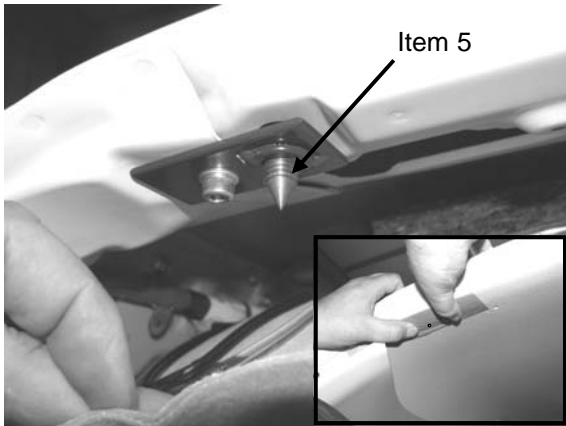
33. Carefully pull rear edge of roof lining down about 60mm.
34. Remove the M6 screws shown. *(These screws are no longer required and will be replaced with longer high tensile screws from the kit)*



35. Taking care to ensure the correct bracket has been chosen, position LH roof bracket ASM (Item 5) as shown. Threaded nut should be inserted into existing hole in panel with small hole aligned with M6 captive nut.
36. Using M6 x 25mm cap head screw (Item 7) with spring washer (Item 8) under head, secure bracket in place.
37. Tighten screw to 9Nm max.
38. Repeat on other side using roof bracket (Item 6).



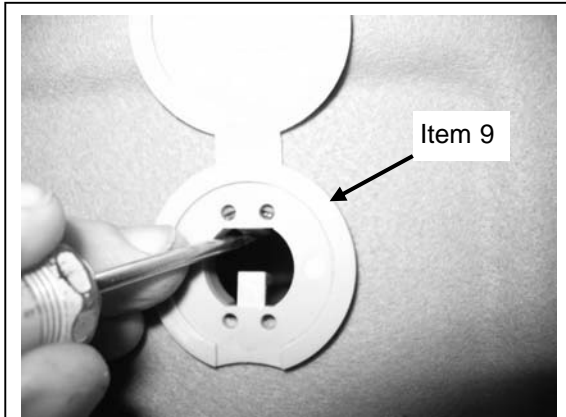
INSTALLATION PROCEDURE FOR UPPER MOUNTS—Cont'd



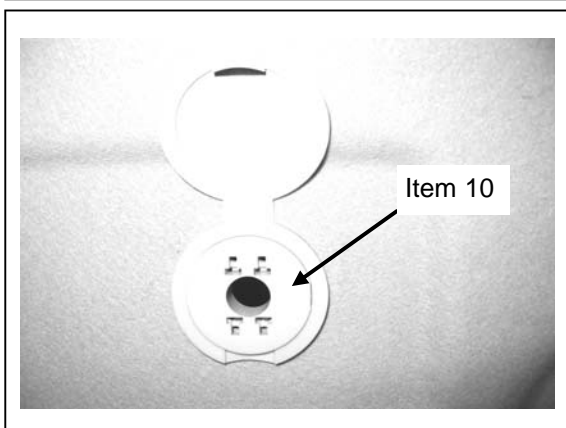
39. Screw marking pins (Item 17) into M10 thread of new roof brackets, with approximately 10mm protruding.
40. Carefully apply pressure to roof lining until marking pins protrude through the lining. Mark protrusion points on roof lining.
41. Remove marking pins.



42. Using a centre punch carefully enlarge the pierced holes in roof lining from step 40 until about Ø5mm.
43. Using Ø20mm vinyl cutter, cut through the roof lining at each of the pierced holes taking care not to damage brackets behind.
44. Vacuum away any cutting swarf.



45. Insert Trim Garnish- Base/Lid (Item 9) into each of the Ø20mm holes cut in roof trim, with the lid pointing forwards.
46. Using small screw driver or similar push the 2 locking tabs outwards so they grip on the back surface of the roof trim.



47. Once legs have been pushed back, push Garnish Spacer (Item 10) into centre of base, until it clips in place flush.
48. Replace 1/4 trims, trim clips and centre light.
49. Replace rubber tailgate seal.

SUZUKI GRAND VITARA 5 DOOR CARGO BARRIER INSTALLATION INSTRUCTION

Part # 708425

VEHICLE YEARS OF MANUFACTURE - FROM AUG. 2008



AFFIXING OF WARNING LABEL

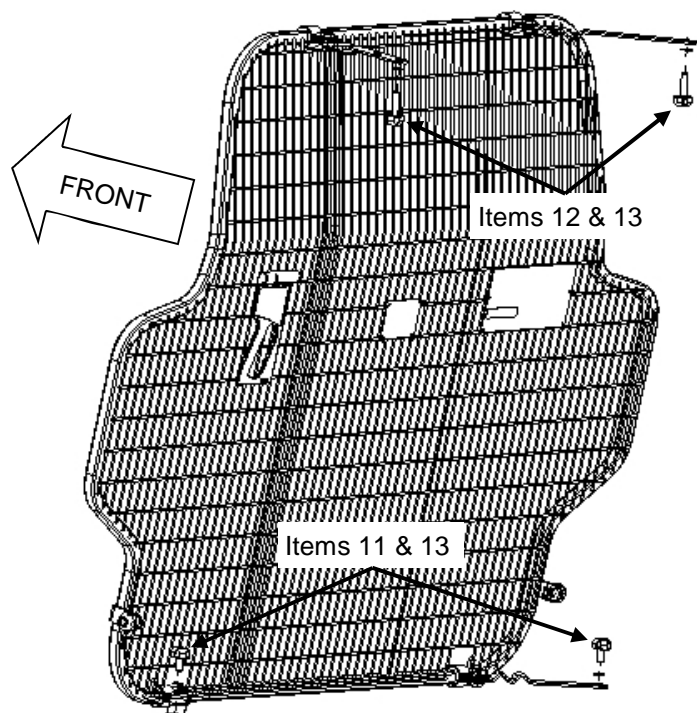


50. Clean area inside drivers door opening as shown.
51. Affix orange warning label (Item 14) at that location as shown.

Please ensure User Instructions are left with vehicle owner after installation.

INSTALLATION OF CARGO BARRIER 'Behind 2nd row of seats'

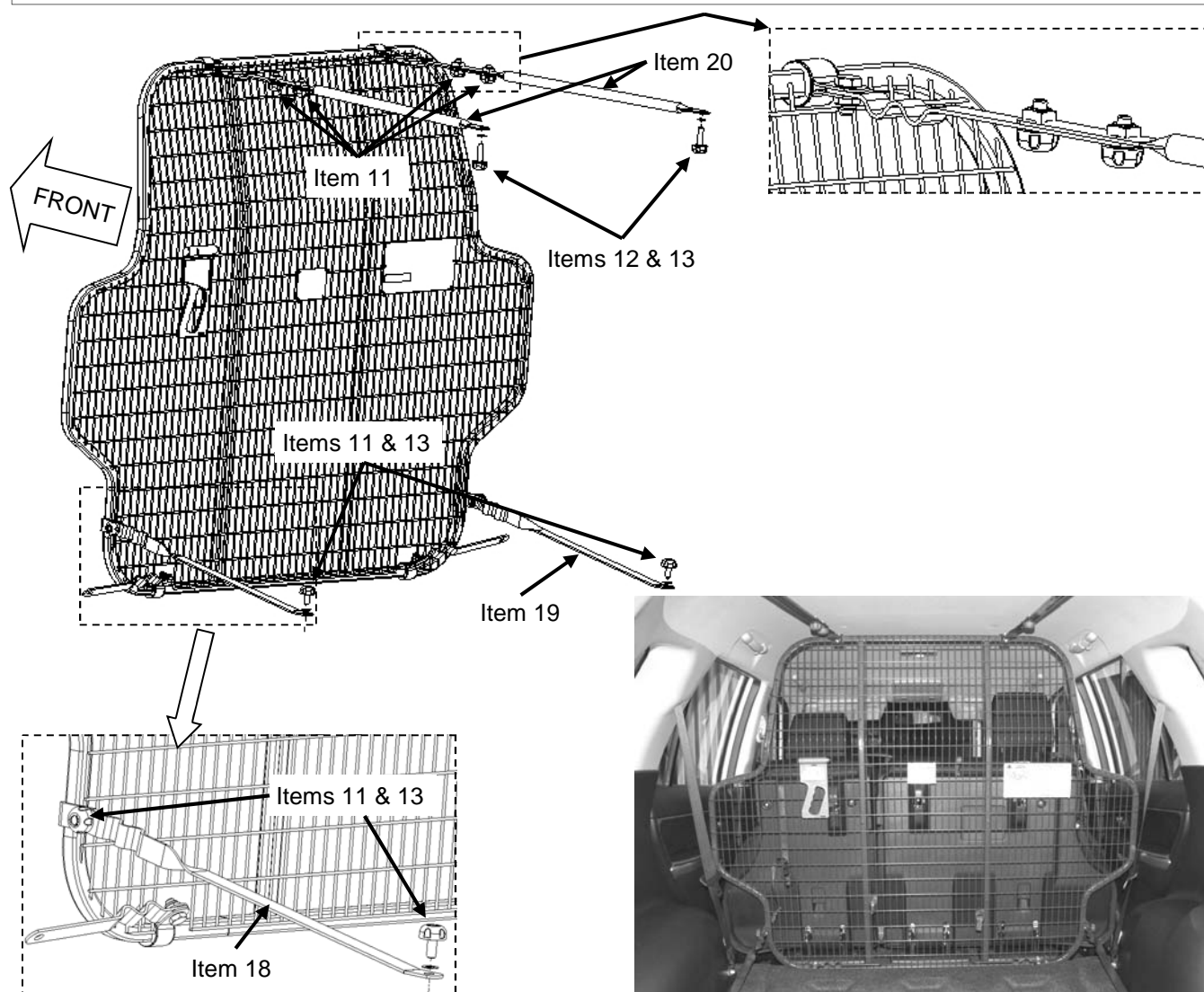
1. Remove cargo blind if installed.
2. Before placing cargo barrier in vehicle ensure the straps are pivoted towards the meshed side of the barrier.
3. Position cargo barrier in cargo area behind 2nd row of seats with rating label (meshed side of barrier) facing the rear of the vehicle.
4. Attach top straps to roof mounts through end holes in straps, using 39mm Milbolts (Item 12) with wave washers (Item 13) under heads.
5. Attach bottom straps to floor mounts using 19mm Milbolts (Item 11) with wave washers (Item 13) under heads.
6. Tighten all Milbolts.
7. Replace cargo blind if required.





INSTALLATION OF CARGO BARRIER 'Behind 1st row of seats'

1. Fold second row seats forward as shown in owners handbook.
2. If moving from rear position undo all Milbolts to release cargo barrier.
3. Move cargo barrier forward until just behind folded 2nd row seats.
4. Attach tube extension straps supplied with cargo barrier to short top straps as shown, using 19mm Milbolts (Item 11).
5. Attach other ends of tube straps to top mounts using 39mm Milbolts (Item 12) with wave washers (Item 13) under heads.
6. Attach front position lower side straps supplied with cargo barrier, to cargo barrier side brackets as shown using 19mm Milbolts (Item 11) with wave washers (Item 13) under heads.
7. Attach other ends of bottom side straps to floor mounts using 19mm Milbolts (Item 11) with wave washers (Item 13) under heads.
8. Tighten all Milbolts.



IMPORTANT NOTE: Check that all bolts and screws are tight and re check periodically.