



MITSUBISHI OUTLANDER CARGO BARRIER INSTALLATION INSTRUCTION Part # 306325

VEHICLE YEARS OF MANUFACTURE - FROM NOV. 2012



This cargo barrier is capable of being located in two positions, behind the 2nd row of seats with the seats in an upright position, and behind the 1st row of seats* with the 2nd row of seats in their folded position. The installation kit contains sufficient components for fitment to the rear position only. A high degree of technical competence is necessary to correctly install this product.

We recommend this cargo barrier be installed by an authorised outlet to ensure the barrier installation complies with AS/NZS 4034 Standard.

The cargo barrier is designed, manufactured and fitted to decrease the impact hazard in an accident to occupants from cargo carried within the interior cargo space of the vehicle. In the event of an accident, a cargo barrier can reduce injuries caused by cargo intruding into occupant's space.

***Front position kit P/N 306327 (sold separately) is required to be able to locate the cargo barrier in the behind 1st row seats position.**

- Installation time approximately 0.75 Hours (1 Hour in 7 seat & power tailgate models)

"The estimated fitting time is based on an experienced fitter conversant with the fitment procedure"



WARNINGS

- Strict compliance with fitting instructions is essential for this safety product to meet its rated capacity. Refer user instructions regarding correct usage of the cargo barrier.
- Do not modify cargo barrier in any way.
- Do not use this cargo barrier in any other vehicle for which it is not designed.
- Modifications to the cargo barrier or its fixings or use in any other vehicle for which it is not designed may void the load rating and warranty.
- Do not attach the cargo barrier to the vehicle using seat, seat belt or child restraint anchorage's.
- Where high tensile threaded fasteners are used, the cargo barrier must be installed using the size and grade fasteners specified by Milford Industries.
- Do not drill, rivet, adhere or attach objects to the front or rear of the cargo barrier.
- Do not place smaller items, that may bypass the cargo barrier in the event of heavy braking or collision, near the edges of the barrier.
- Position the load against the cargo barrier.
- When load is positioned against cargo barrier, secure the load with a restraint system.
- During a collision moving cargo may damage seat belts or tether straps of a child restraint device, or its anchorage. Load should be carefully positioned so as not to come in contact with these items.
- Do not obstruct seat belts or child restraints, or their operation.
- Long thin items of cargo should be positioned in the vehicle with the long axis across the vehicle to minimise the penetration risk.
- If involved in an accident or accidentally damaged, the cargo barrier should be replaced and the anchorage's repaired to as new condition.
- Clean with soap and water only. Do not use solvents or chemicals. Discard cargo barrier if it becomes rusted. Do not expose to direct sunlight for long periods.
- It is extremely dangerous to ride in the cargo area of the vehicle behind the cargo barrier. It is recommended that the cargo barrier be removed. In a collision people or children riding unrestrained in these areas are more likely to be seriously injured or killed.
- Never leave a child in the vehicle unattended, particularly in the rear cargo area. The cargo area should never be used as a play area for children.
- The cargo barrier may deform and significantly intrude into occupant's space in an accident.
- Remember that the tailgate cannot be opened from inside the cargo area.
- The fixed labeling should not be removed from the cargo barrier.
- Failure to comply with warning notes may prevent the barrier protecting the occupants.
- Parents should explain to children how and when to use **EMERGENCY ESCAPE HAMMER** attached to cargo barrier.
- Do not remove the rating plaque from the cargo barrier.

NOTICE TO INSTALLERS & DISTRIBUTORS

Please ensure User Instructions are left with vehicle owner after installation.

MITSUBISHI OUTLANDER CARGO BARRIER INSTALLATION INSTRUCTION

Part # 306325

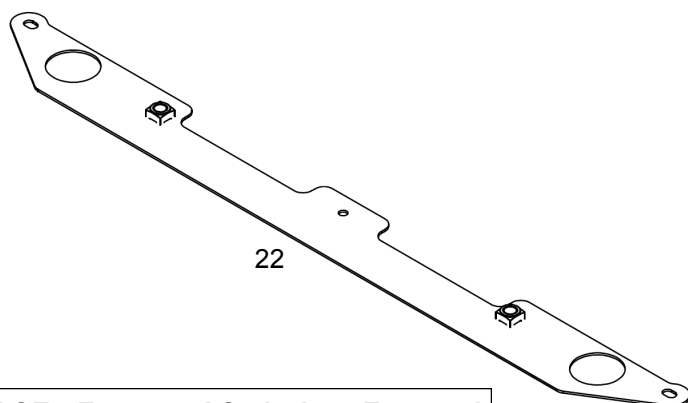
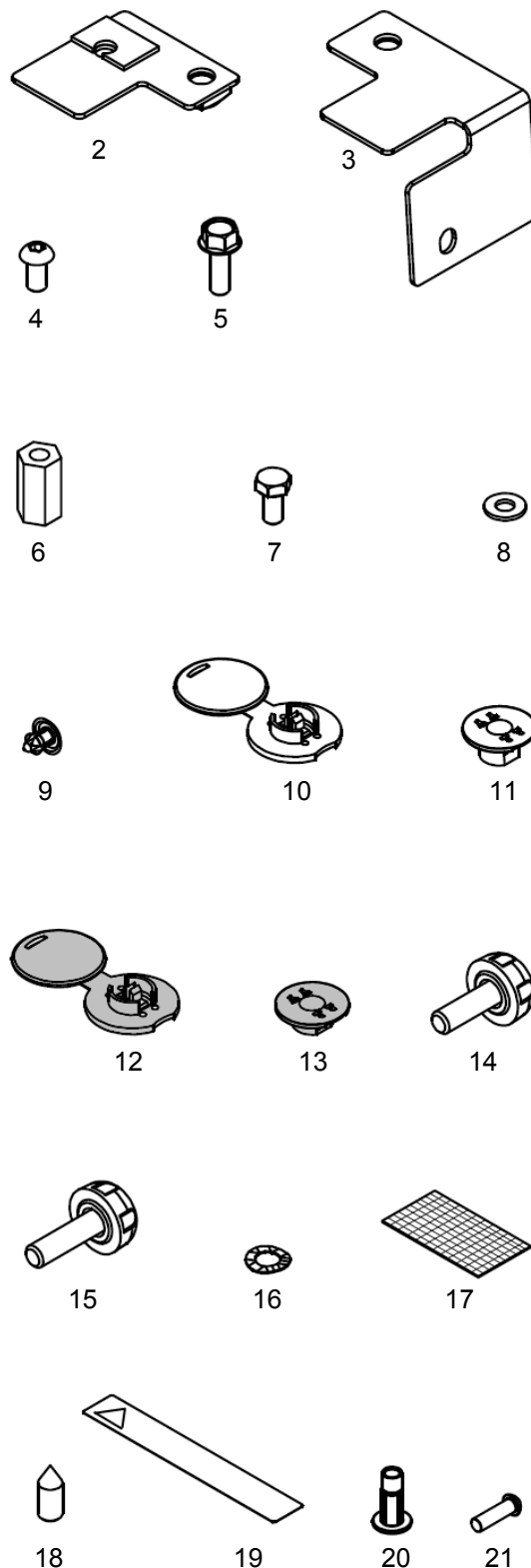
VEHICLE YEARS OF MANUFACTURE - FROM NOV. 2012



IMPORTANT: The installation kit contains sufficient components to fit the cargo barrier. A high degree of technical competence is necessary to correctly install this product. We recommend this cargo barrier be installed by an authorised outlet to ensure the barrier installation is correct. These instructions must be read and clearly understood before commencing installation. Check contents of kit before commencing fitment and report any discrepancies or damage.

Parts List

Item	Component Name	Part No.	Qty
1	Cargo Barrier ASM (see page 11)	306325	1
2	Bracket ASM - Bottom LHS	753455	1
3	Bracket ASM - Bottom RHS	753458	1
4	Screw - Button Head, M8 x 1.25 x 16mm ZP	913140	1
5	Screw - Hex Hd Flanged, M8 x 1.25 x 20mm	912785	1
6	Threaded Hex Spacer (M8 x 1.25) ZP	753042	2
7	Screw - Hex Hd, M8 x 1.25 x 16mm ZP	912670	2
8	Washer - Flat, 8mm ZP	932085	2
9	Scrivet - Plastic Fastener	904503	1
10	Trim Plug - Base & Lid (Beige)	753075	2
11	Trim Plug Insert (Beige)	753076	2
12	Trim Plug - Base & Lid (Black)	753095	4
13	Trim Plug Insert (Black)	753097	4
14	Milbolt - M10 x 1.5 x 29mm	912830	2
15	Milbolt - M10 x 1.5 x 34mm	912835	2
16	Wave Washer - 10mm	932125	4
17	Adhesive Felt Pad	904685	1
18	Marking Pin (M10)	906185	2
19	Adhesive Warning Label (Orange)	905017	1
20	Threaded Insert (M6)	907608	1
21	Screw - Button Head, M6 x 1.0 x 20mm ZP	912981	1
22	Bracket ASM - Roof	753460	1



E and OE—Errors and Omissions Excepted



ADVICE TO FITTER

Note: To fit the cargo barrier the following is essential: (where applicable)

- ☐ Always drill perpendicular to surface (Unless stated otherwise).
- ☐ A positive drill stop should always be used to prevent accidental damage to external panels, fuel lines etc.
- ☐ Ensure Safety Eye Protection and Gloves are worn as required when using cutting tools.
- ☐ When cutting metal panels be very careful of sharp edges, for risk of skin cuts etc.
- ☐ Care should be taken when applying Rust Preventative sealer to all holes drilled, to negate the possibility of skin and eye irritation.
- ☐ Check screws in relevant components by hand before installation. Should there be resistance re-tap threads and re-check.
- ☐ **Before marking or drilling to install this cargo barrier, check vehicle for LPG conversion & non standard fuel tanks. Locate tanks and all lines attached and take EXTREME CARE not to damage whilst installing this cargo barrier.**
- ☐ **Before drilling to install this cargo barrier, check for concealed wiring looms. E.g. tow bar, reversing camera, reversing sensor wiring etc.. Relocate before drilling to avoid damage.**

**CARE SHOULD BE TAKEN NOT TO CROSS THREAD THE FASTENERS DURING
INSTALLATION OF COMPONENTS TO THE VEHICLE.**

TOOLS REQUIRED

- | | |
|--|--|
| <input type="checkbox"/> Socket Wrench | <input type="checkbox"/> 22mm Hole Saw |
| <input type="checkbox"/> Metric Hex Sockets | <input type="checkbox"/> 20mm Vinyl Cutter |
| <input type="checkbox"/> Trim Removal Tools | <input type="checkbox"/> Hex Bits & Wrench Adaptor |
| <input type="checkbox"/> Screwdrivers (Small flat blade) | <input type="checkbox"/> Vacuum Cleaner |
| <input type="checkbox"/> Power Drill | <input type="checkbox"/> Cover sheet / Drop sheet |
| <input type="checkbox"/> Masking Tape | <input type="checkbox"/> Torque Wrench (10 to 30Nm) |
| <input type="checkbox"/> Marker Pen | <input type="checkbox"/> Clean Rag |
| <input type="checkbox"/> 9mm, 5mm Drill Bit | <input type="checkbox"/> Threaded Insert Tool (with M6 long mandrel) |
| <input type="checkbox"/> Drill Stop's | |



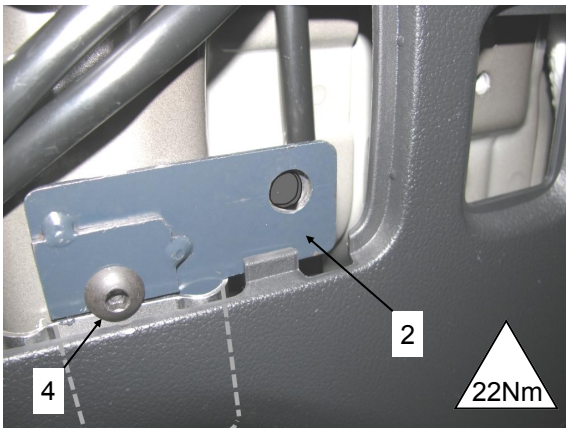
INSTALLATION PROCEDURE FOR LOWER MOUNTS



1. Identify the area which you will be working in. Sides of cargo area.



2. On the LHS unclip the rectangular cover shown just behind the forward 'D' anchors.



3. Slide the bracket ASM (2) in behind the chassis member as shown until the levelling plate is sitting hard against the top edge of the chassis member.
4. With the hole aligned with captive nut in the chassis, secure the bracket in place using M8 button head screw (4).
5. Tighten & torque up screw to 22Nm.



Note: Some models do not have the captive nut fitted to the back of the mounting hole. In this situation follow the steps below.

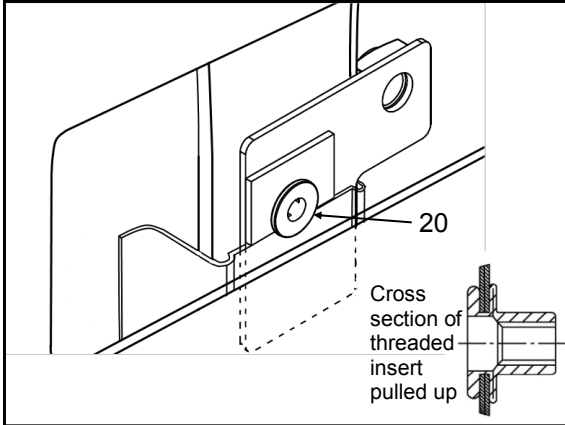


6. Screw the threaded insert (20) onto a suitable threaded insert tool.
7. With the LHS bracket ASM (2) positioned as per above, place the threaded insert through the hole in the bracket and panel behind.

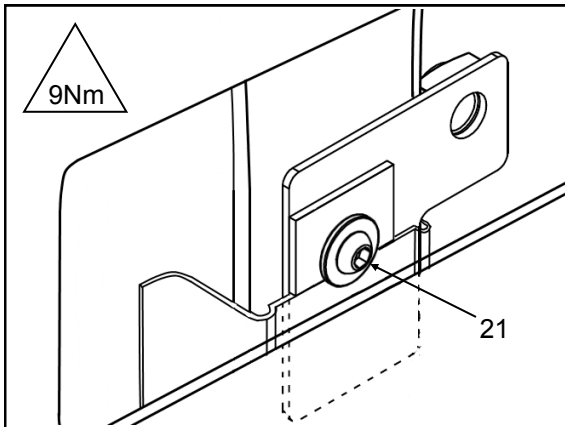
Note: Should the holes be slightly out of alignment, run a 9mm drill through the holes with the bracket in position, to allow the insert to be fitted.



INSTALLATION PROCEDURE FOR LOWER MOUNTS - Cont'd



Threaded insert shown installed.



8. Screw an M6 button head screw (21) into the threaded insert and tighten to 9Nm.



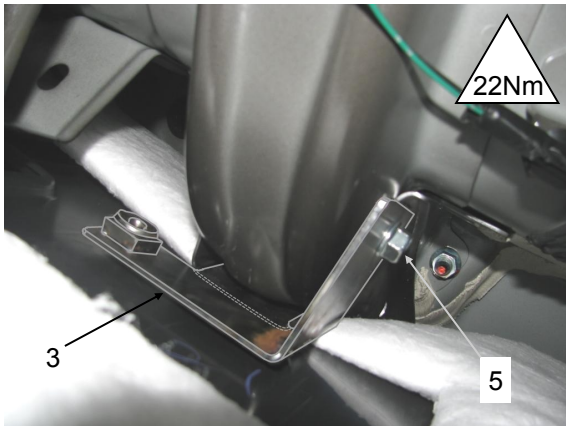
9. On the RHS of the cargo area carefully unclip the cover, from the top of the wheel arch trim to expose wheel arch.



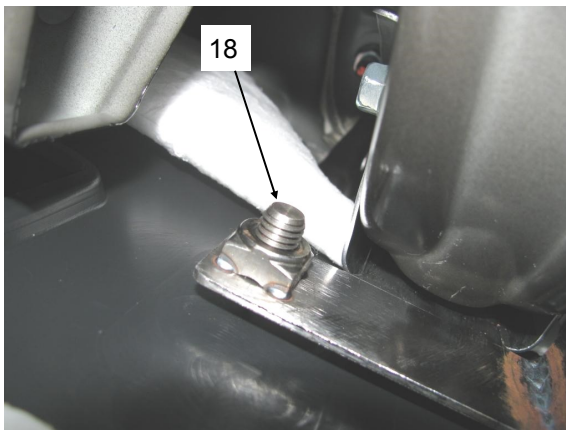
10. Working inside the RHS trim remove the M8 screw indicated and discard.



INSTALLATION PROCEDURE FOR LOWER MOUNTS - Cont'd



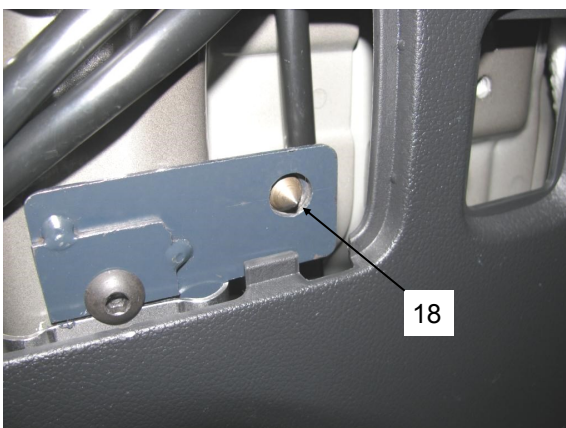
11. Slide the bracket ASM (3) in behind the chassis member as shown.
12. Secure the bracket ASM in position using M8 hex head flange screw (5) into the vacated captive nut.
13. Tighten & torque up the screw to 22Nm.



14. Screw a marking pin (18) into the back of the RHS bracket ASM captive nut, with the point towards the hard plastic trim.



15. Whilst supporting the bracket from behind push on the trim until the point of the marking pin can be seen on the cabin side of the trim.
16. Mark the point position if necessary then remove the marking pin.



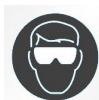
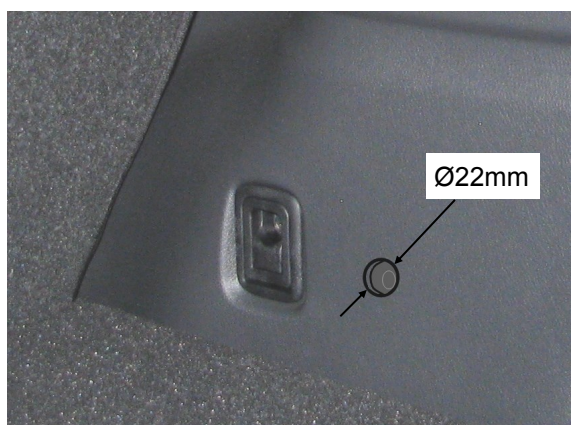
17. On the LHS, screw a marking pin (18) into the bracket ASM captive nut with just the point protruding.



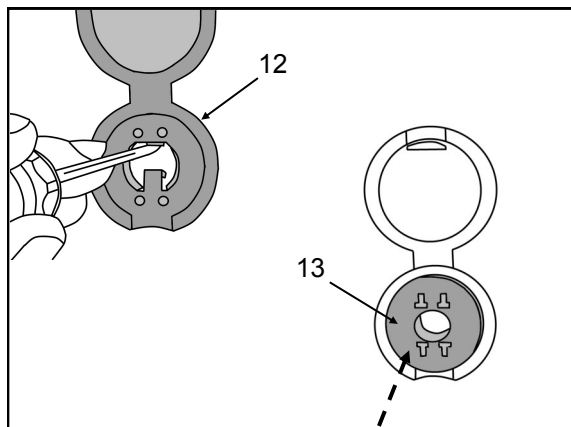
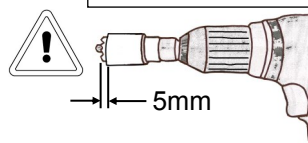
INSTALLATION PROCEDURE FOR LOWER MOUNTS - Cont'd



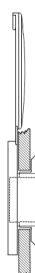
18. Carefully position the plastic cover back in place then apply pressure at the marking pin location until a mark is left in the back face of the cover.
19. Remove the cover.
20. Remove the marking pin.



21. At the marked locations on both the RHS side trim and the LHS cover, carefully drill a 5mm pilot hole.
22. Using a 22mm hole saw with drill stop set at 5mm enlarge the pilot holes.
23. Deburr the cut holes if necessary.
24. Resecure both of the trim pieces removed, back in place.



Cross section of trim plug installed



25. Place a black trim plug base and lid (12) into each of the cut holes in side trims.
26. Using a small flat blade screwdriver push the securing legs back behind the trim panel.
27. With the legs pushed fully back push a black trim plug insert (13) into each of the trim plugs until it clips in place.



INSTALLATION PROCEDURE FOR UPPER MOUNTS



28. Place a drop sheet over the cargo area floor.
29. Using a suitable trim removal tool carefully unclip the top part of the rear 1/4 trims enough to allow the roof lining to drop down about 100mm at the back.

Note: In models with 3rd row seats and power tailgates the upper seat belt bolts and extra trim will need to be moved out of the way first.



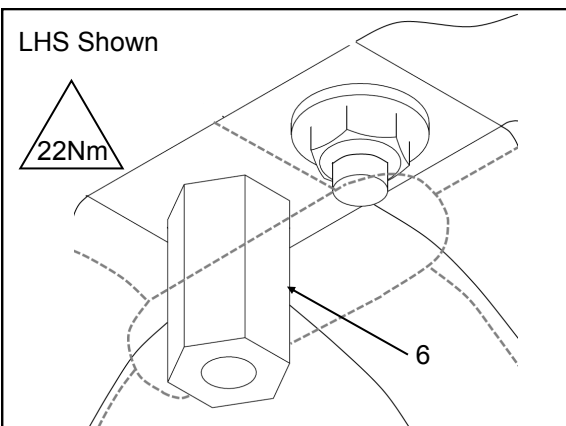
Note: The motor system for the power tailgate models is located behind the trim. Be careful when unclipping trim as it cannot be removed as far.



30. Using a suitable trim removal tool remove the 3 trim plugs supporting the roof lining along the back edge.



31. Locate the tailgate hinge securing nuts.
32. Using a 12mm AF socket remove the **outer hex nuts only** from each of the tailgate hinges and discard.

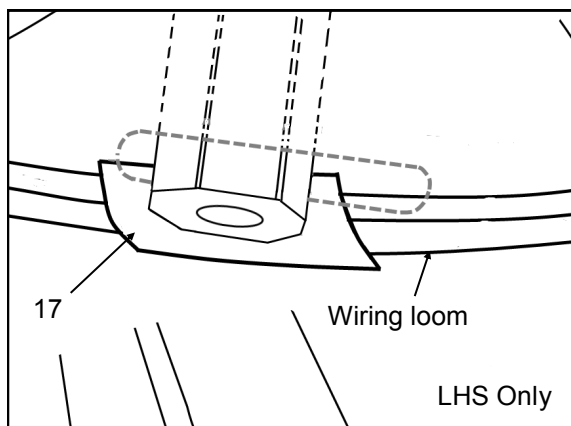


33. Screw a threaded hex spacer (6) onto each of the outer hinge studs.
34. Tighten and torque up the threaded hex spacers to 22Nm.



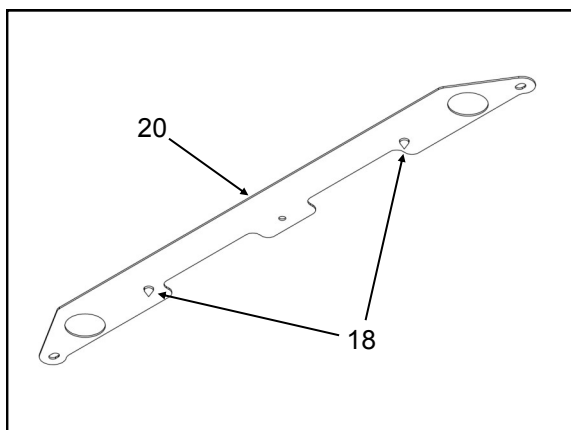


INSTALLATION PROCEDURE FOR UPPER MOUNTS - Cont'd



35. On the LHS just forward of the threaded hex spacer locate the existing wiring loom.

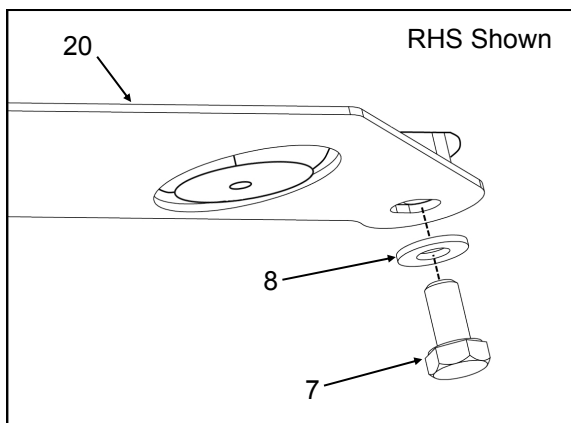
36. Affix the adhesive felt pad (17) over the back surface of the wiring loom directly forward of the LHS hex spacer.



37. Screw a marking pin (18) into each of the captive nuts in the roof bracket (20) with approx. 10mm protruding.



38. With the captive nuts on top and the mounting holes to the front, carefully slide the roof bracket in between the roof lining and the metal roof panel.



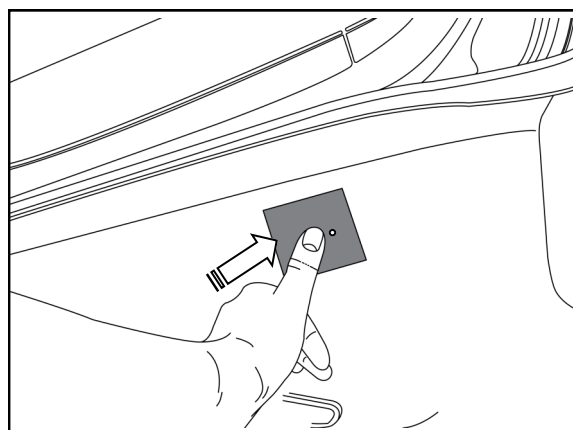
39. Align the mounting holes with the threaded hex spacers then secure loosely in place using M8 hex screws (7) with flat washers (8) under heads.



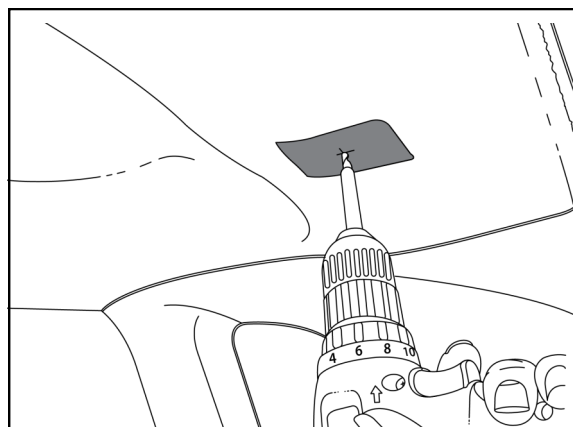
INSTALLATION PROCEDURE FOR UPPER MOUNTS - Cont'd



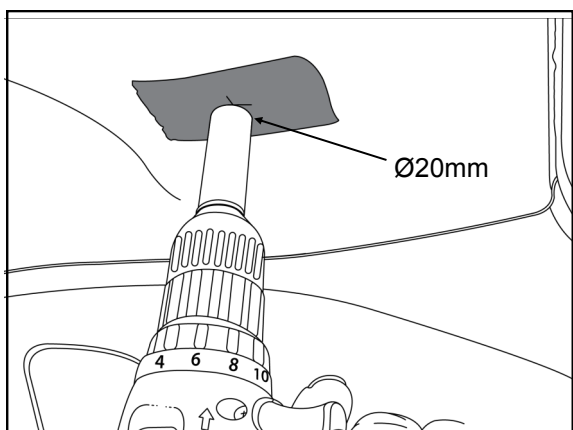
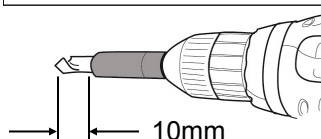
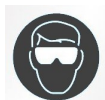
40. Ensure the centre clip hole in the roof bracket is aligned with the clip hole in the vehicle roof panel.
41. Tighten and torque up bracket securing screws to 10Nm.



42. Apply masking tape to the cabin side of the roof lining at the approximate locations of the marking pins.
43. At the approximate location of the marking pins apply pressure to the roof lining until the points can be seen on the cabin side. Mark the point locations with a marker pen if required.
44. Remove the marker pins from roof bracket.



45. Using a Ø5mm drill bit with drill stop set at 10mm carefully drill a pilot hole through the roof lining at each of the marked locations from above.

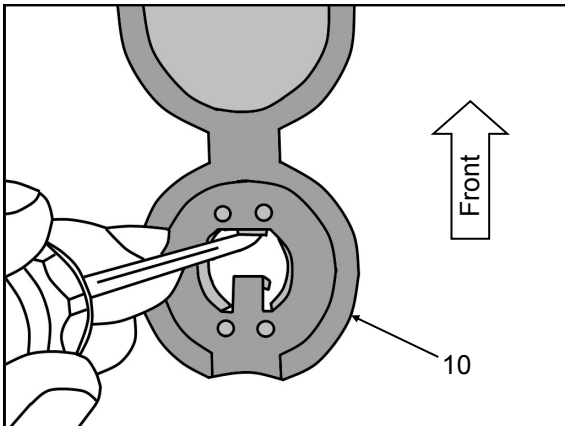


46. Using a Ø20mm vinyl cutter, enlarge each of the pilot holes through the roof lining.
47. Remove the masking tape.
48. Vacuum away any drilling swarf.

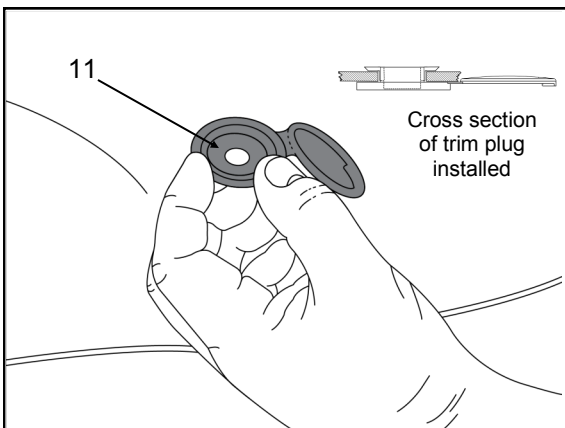




INSTALLATION PROCEDURE FOR UPPER MOUNTS - Cont'd



49. Place a correctly coloured trim plug base and lid (10) into each of the cut holes in the roof lining with the lids facing forward.
50. Using a small flat blade screwdriver push the securing legs back behind the roof trim.



51. With the legs pushed fully back push a correctly coloured trim plug insert (11) into each of the trim plugs until it clips in place.



52. Place the scrivet (9) through the centre roof trim hole, through the roof bracket and into the vehicle body work then pin in place securing the roof bracket firm.
53. Replace the outer trim plugs.
54. Re secure the 1/4 trims back in place taking care not to damage the metal clips at the top.
55. Reset the rubber door seal over the roof lining & trims.
56. Remove the drop sheet.



Note: If 3rd row seats, seat belt bolts have been removed, resecure and torque up to 30Nm.

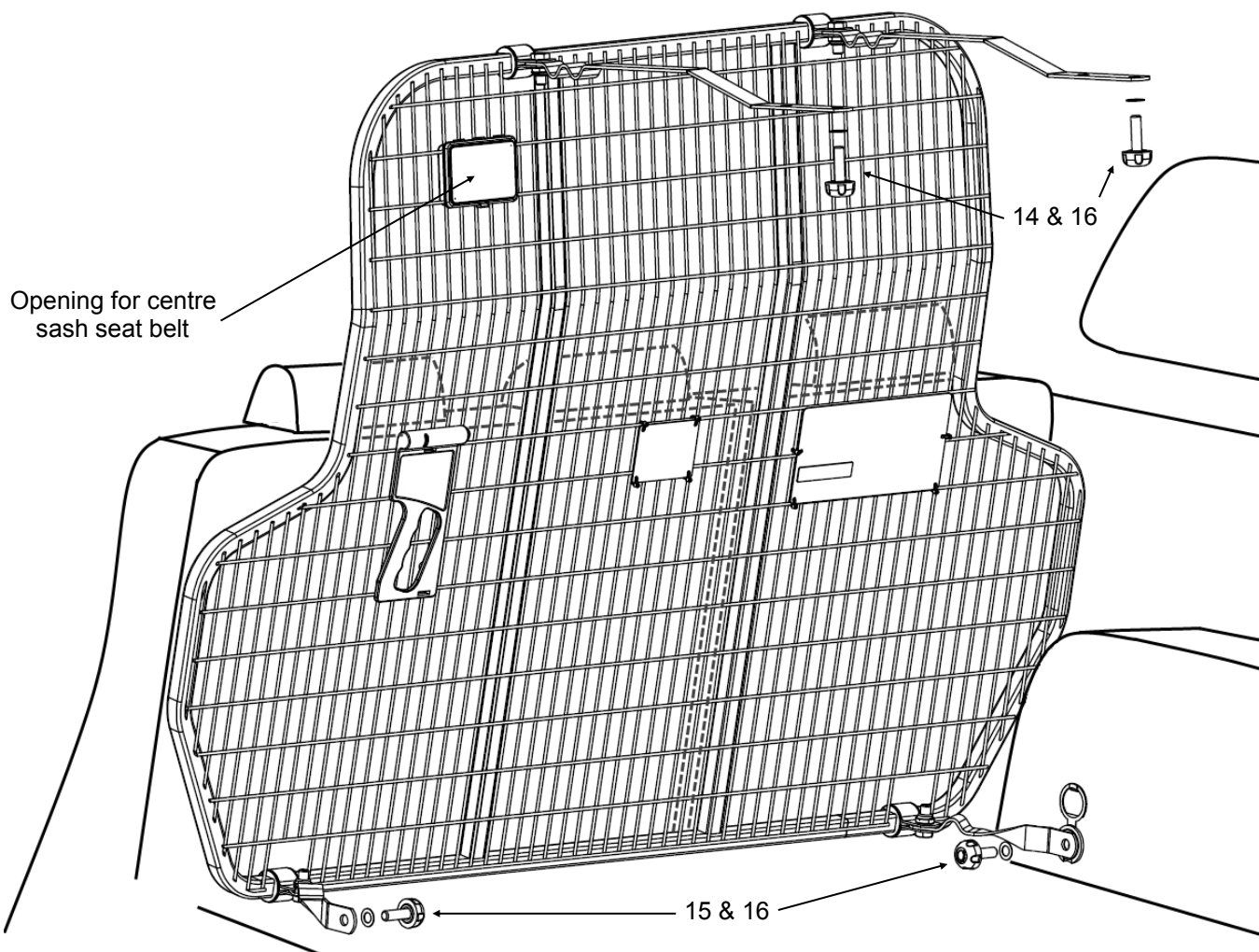


57. Clean the area inside drivers door opening as shown.
58. Affix orange warning label (19) at that location as shown.



INSTALLATION OF CARGO BARRIER **'Behind 2nd row of seats'**

1. Remove the cargo blind if fitted.
2. Lay the 2nd row seats down flat to allow manoeuvring space.
3. Ensure the attaching straps are pivoted towards the meshed side of the cargo barrier.
4. With the meshed side of the cargo barrier facing the rear of the vehicle, manoeuvre the cargo barrier into position in the behind 2nd row seats location.
5. Attach the top straps to the roof mounts using 29mm Milbolts (14) with wave washers (16) under heads.
6. Attach the bottom straps to the side mounts using 34mm Milbolts (15) with wave washers (16) under heads.
7. Tighten all Milbolts.
8. Replace cargo blind if fitted/required.



Please ensure User Instructions are left with vehicle owner after installation.



IMPORTANT NOTE: Check that all bolts and screws are tight and re check periodically.