

Z5302 –Bushing installation guide

WARNING: These products are designed for easy installation however installation by a recognized trades person is recommended. Please drive carefully and accustom yourself to any changes in handling characteristics of the vehicle.

Note: This installation guide should be used in conjunction with the vehicle manufacturers repair manual.

1. Remove the old rubber bushing from the suspension arm eyelet and or chassis eyelet making sure to remove any steel casing that may be part of the original rubber bushing. This is very important as the supplied replacement bushing has been specifically designed to be installed into the suspension/chassis eyelet without this steel shell.

Note: If an aftermarket bushing has been previously installed then the steel shell may have already been removed. (Refer image 1).

2. Using a round file remove all sharp edges from both ends of the arm/chassis eyelet internal diameter. (Refer image 2)
3. Using a flat file remove all sharp edges from both ends of the arm/chassis outside diameter. (Refer image 2)
4. Using sand paper or wire wheel on an air/power tool remove any rust, old rubber deposits, dirt and paint so a clear inspection of the suspension component can be made prior to any bushing installment. Any damaged, worn or bent components should be repaired or replaced as required.
5. Install the supplied bushing into the cleaned arm/chassis eyelet. (Refer image 3).
6. With the supplied bushings now installed into the arm/chassis eyelets, lubricate the internal bore using the supplied grease making sure to fill all the internal knurling for best service life. Also apply the supplied grease to contact face of the bushings. (Refer image 3, and image 4 lubrication guide).
7. If center sleeves are supplied in the kit, lubricate the outer surface of the sleeve and install into the required bushing. (Refer image 3).
8. Refit all components to vehicle
9. Tension components to manufacturer's specifications at normal ride height.
10. Test drive vehicle and recheck all removed components for tension and correct operation.

Representative image of suspension arm eyelet

Original equipment shell style bushing

Note: The design of the supplied bushing kit requires the removal of this steel shell.

Some manufacturers do not use steel shell bushings at this point so the shell would not be required to be removed

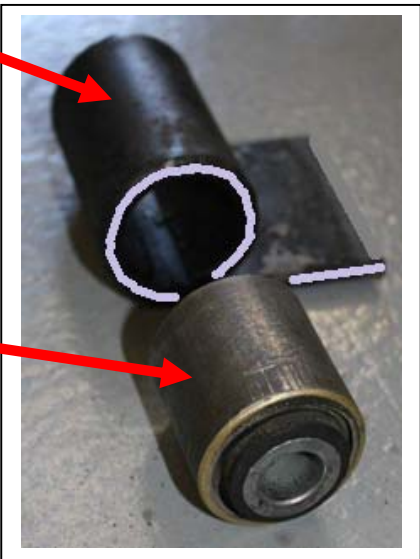
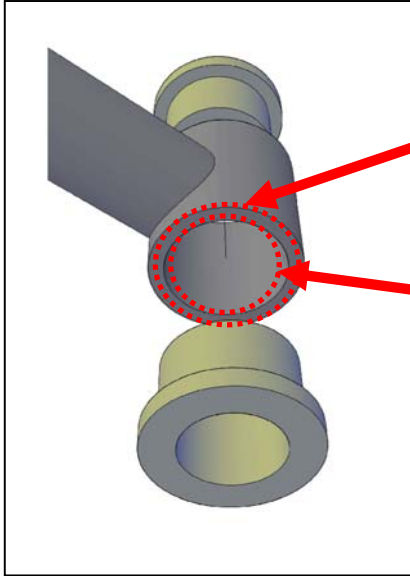


Image 1

Image 2



Using a flat file remove sharp edge from outside diameter both ends of tube

Using a round file remove sharp edge from inside diameter both ends of tube

Lubricate outside of sleeve before installing.

Note: A center sleeve may or may not be required at this point in the bushing kit as some bushings may run directly on the suspension retaining bolt.

Lubricate hardware contact face at both ends.

Lubricate the internal bore of the supplied bushing as per instruction sheet and lubrication guide (refer image 4).

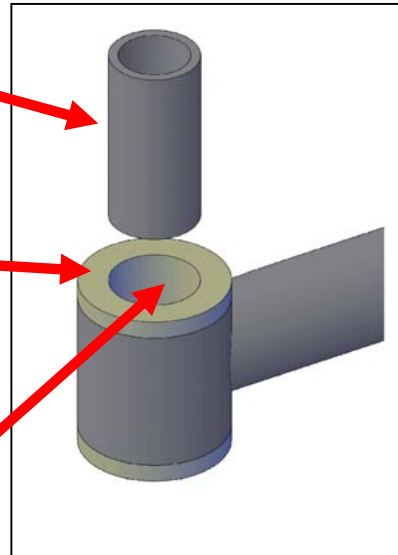
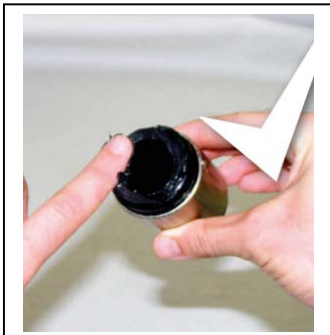


Image 3

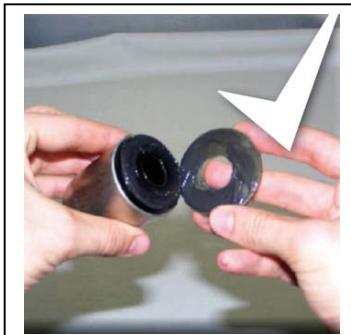
Lubrication guide - useful tips on correct grease placement.



Lubricate contact face.



Lubricate internal bore.



Lubricate shackle plate/working surface (hardware if supplied).

Image 4