

Instructions

Front Upper Control Arms

Application:

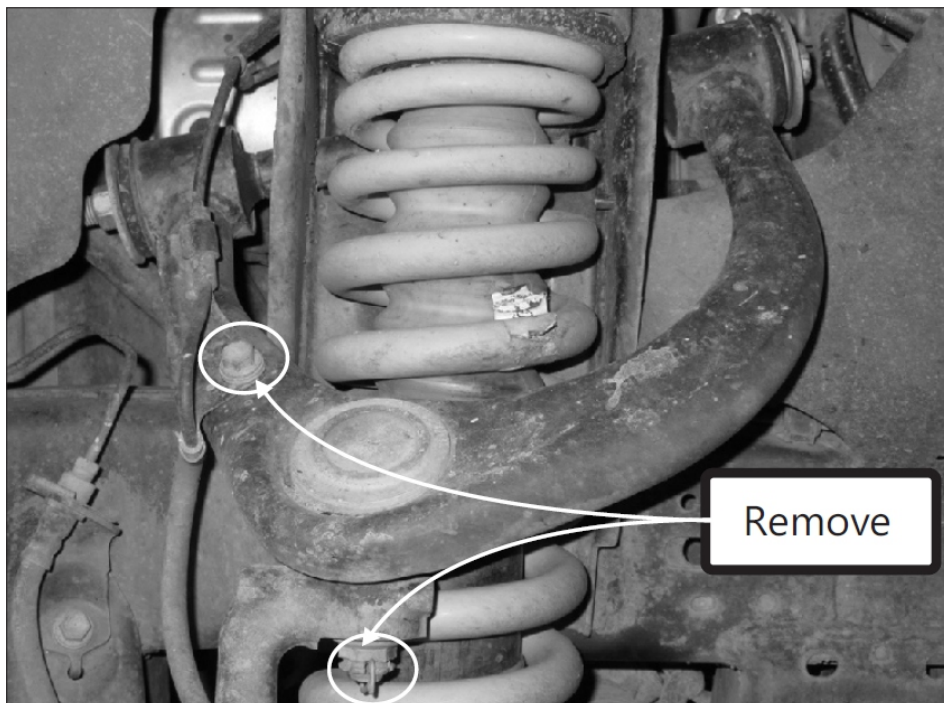
- Toyota Prado 120 Series
- Toyota Prado 150 Series
- Toyota FJ Cruiser

Contents:

- 2x complete upper A arms
- with ball joints

(Refer current catalogue listing)

IMPORTANT: Fitment of ZEDER upper control arms to vehicles that have lifts fitted greater than a 50mm (2 inch) height may suffer from premature ball joint failure if droop length exceeds specification listed in the RVD. The use of strut spacers may also effect the performance and longevity of the UCA ball joint due to the limitations of the spherical bearing housing being breached or bound at full suspension droop. There will be no warranty either expressed or implied if the vehicle is used out of legal driving conditions that will include but is not limited to jumping of the vehicle.



1. Raise vehicle evenly and safely support

Never rely on a Jack only

2. Proceed to remove the front wheels.
3. Using a Jack, place under the lower control arm ball joint to support the weight of the lower control arm & hub.

4. Remove the ABS wiring bolt from the OEM arm.
5. Remove the 'R' clip from the bottom of the ball joint stud

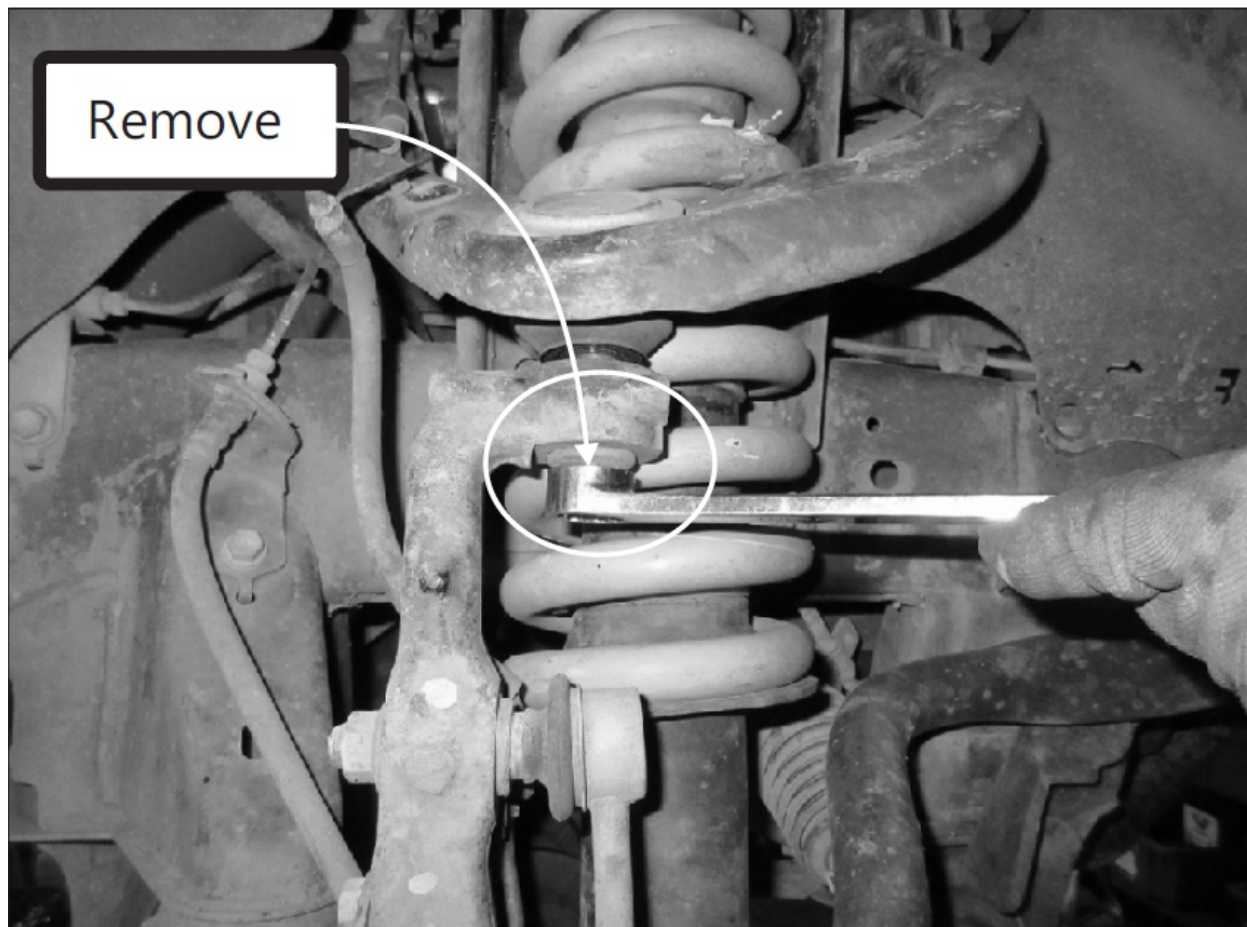
N.B: It is recommended that a licenced workshop or tradesperson carry out the above procedure and that workshop manual and relevant safety procedures are followed in addition to the above.

Instructions

Front Upper Control Arms

Continued -

6. Loosen the ball joint nut - but do not remove yet.
7. Using a hammer, strike the face of the hub with several blows to release the taper of the ball joint from the hub.
8. Remove the ball joint nut.



N.B: It is recommended that a licenced workshop or tradesperson carry out the above procedure and that workshop manual and relevant safety procedures are followed in addition to the above.

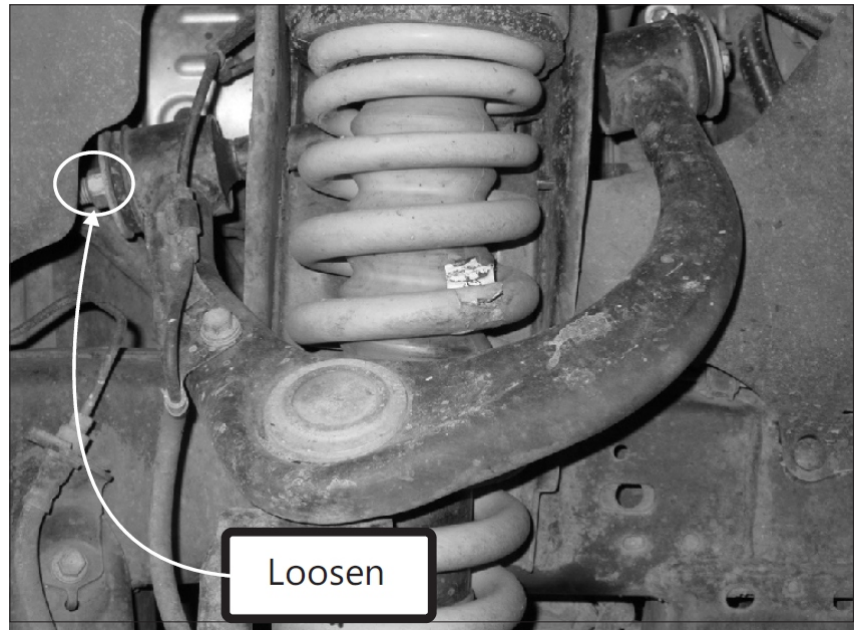
Instructions

Front Upper Control Arms

Continued -

9. Loosen the control arm nut.

Note: Depending on vehicle model, removal of the mounting bolt may require the removal of the batteries and air cleaner

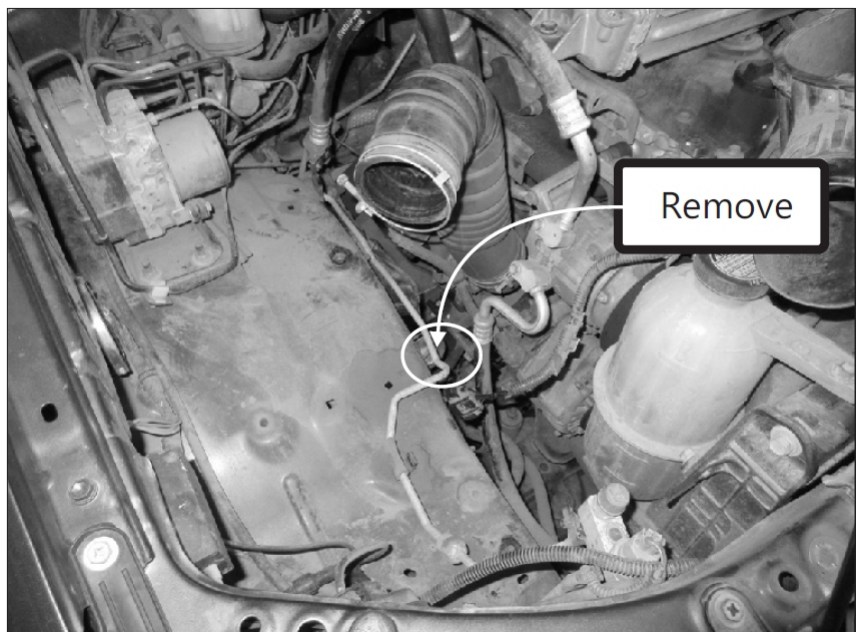


10. Remove the air mass sensor clip and wiring harness clip.

11. Remove the intake tube steel clamp.

12. Remove the two lower mounting bolts.

13. Remove the air filter housing to facilitate removal of the bolt.



N.B: It is recommended that a licenced workshop or tradesperson carry out the above procedure and that workshop manual and relevant safety procedures are followed in addition to the above.

Instructions

Front Upper Control Arms

Continued:

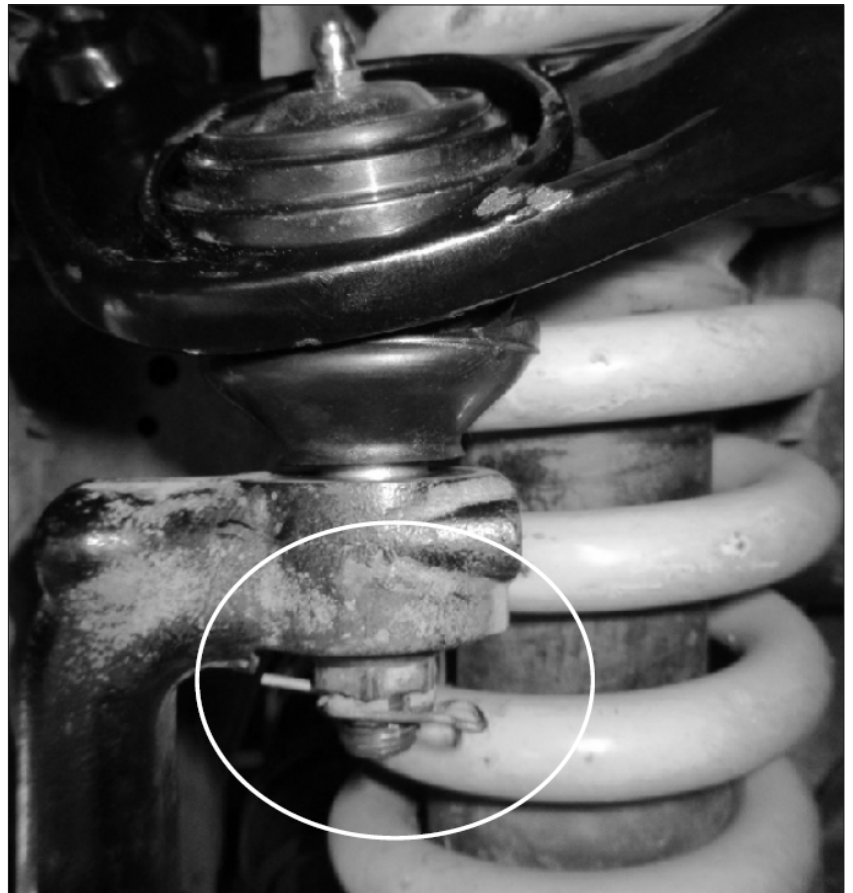
14. Install new supplied arm, refitting the removed OEM bolt, nut and washers.
15. Bolt up arm with OE bolt/nut and washers

16. Install the ball joint taper into the wheel hub, refit & torque the flange nut. Push 'R' clip in position.

17. Re-fit the ABS wiring bracket.

18. Remove the jack supporting the lower control arm, re-fit the wheels and lower the vehicle.

IMPORTANT - a wheel alignment is required immediately after install.



Re-check all bolts after 100kms travelled.

N.B: It is recommended that a licenced workshop or tradesperson carry out the above procedure and that workshop manual and relevant safety procedures are followed in addition to the above.