

Z5304 –Body mount installation guide

WARNING: These products are designed for easy installation however installation by a recognized trades person is recommended. Please drive carefully and accustom yourself to any changes in handling characteristics of the vehicle.

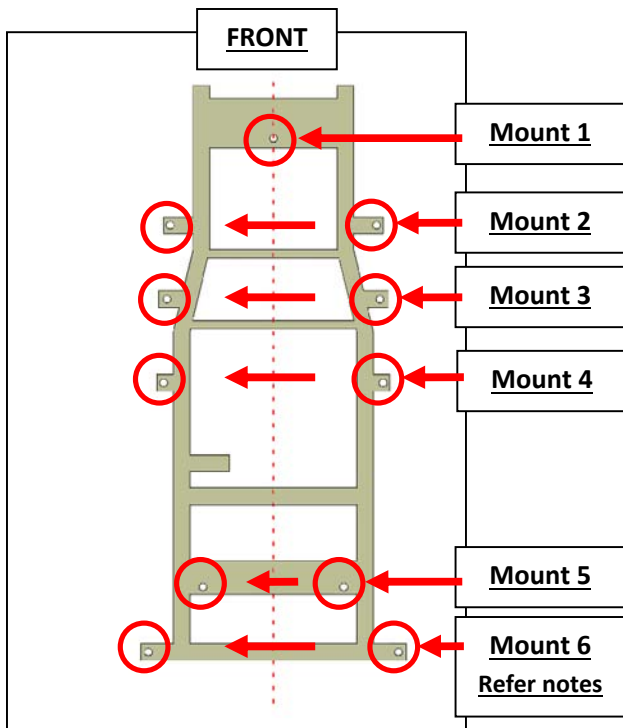
Note: This installation guide should be used in conjunction with the vehicle manufacturers repair manual.

Note: Many of the original fittings like washers nuts and bolts may be required to be re-installed.
 : Care must be taken to note the position and orientation of the removed hardware for re-installation.
 We suggest taking a photo and using separate containers to keep mount hardware in specific order and position for use in re-installation.
 : Carry out mount installation one side of the vehicle at a time.

1. Loosen ALL body mounting points but leave in place to help in locating the body in later steps. (Penetrating oil may be required depending on existing hardware corrosion).
2. Disconnect the brake line bracket above the proportioning valve.
3. Remove the retaining bolts down one side of the chassis to body including the front center mount and lift the body on one side only and remove the original body mounts.

Note: Never lift the body further than required to install the raised mounts to help stop damage to other components mounted between the chassis and body of the vehicle. It may take two jacks to equally raise the body to install the mounts. Always use the largest possible surface area when lifting. Clearance of other components must be inspected during the lift, i.e. Fan shroud and wiring connectors.

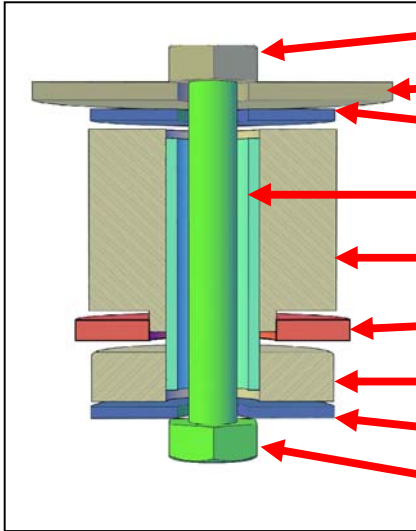
4. Install one mount at a time as per the below images using the supplied or reused hardware.
5. Repeat step 4 for the other side of the body.
6. Once all mounts are installed align the body to the chassis and tension all removed and replaced hardware to manufacturer's specification.
7. Suitably mount and retain the proportioning valve brake line.
8. Recheck all removed components for alignment and tension after 100miles but no more than 200.



Part No:	Description	QTY	Mount
67879	Urethane upper mount	1	1
67780	Urethane lower mount	1	1
67883	Urethane upper mount	10	2,3,4,5,6
67818	Urethane lower mount	2	2
67817	Urethane lower mount	8	3,4,5,6
Sleeve	3/4" x 2.050"	1	1
Sleeve	3/4" x 2.760"	2	2
Sleeve	3/4" x 2.270"	6	3,4,6
Sleeve	3/4" x 2.450"	2	5
Washer	2"OD x 7/16"ID	4	1,6*
Washer	2 1/2"OD x 3/8"ID (top)	10	2,3,4,5,6
Washer	2"OD x 3/8"ID (bottom)	10	2,3,4,5,6
Washer	2 1/2"OD x 7/16"ID (top)	2	6*
Bolt	7/16"-14 x 3 1/2"	3	1,6*
Bolt	3/8"-16 x 3 1/4"	8	3,4,5,6
Bolt	3/8"-16 x 4"	2	2

NOTE: Body Mount 6
 The original manufacturers hardware will determine which of the supplied hardware will need to be used on your vehicle.
 May use 7/16"-14 x 3 1/2" Bolts and 7/16"ID washers.

Body mount: 1.



Captive retaining nut (part of body).

Body section

Supplied washer - 2"OD x 7/16"ID

Supplied Steel sleeve - 3/4" x 2.050"

Supplied bushing - 67879

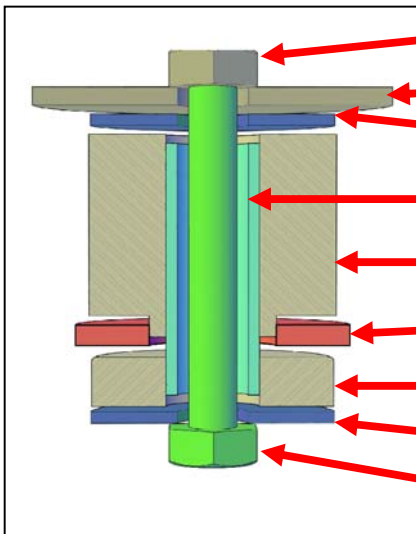
Chassis section

Supplied bushing - 67880

Supplied washer - 2"OD x 7/16"ID

Supplied bolt - 7/16"-14 x 3 1/2"

Body mount: 2.



Captive retaining nut (part of body).

Body section

Supplied washer - 2 1/2"OD x 3/8"ID

Supplied steel sleeve - 3/4" x 2.760"

Supplied bushing - 67883

Chassis section

Supplied bushing - 67818

Supplied washer - 2"OD x 3/8"ID

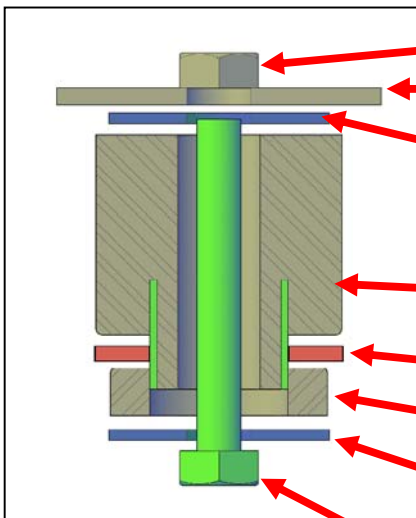
Supplied bolt - 3/8"-16 x 4"

Body mount: 3.

Body mount: 4.

Body mount: 5.

Body mount: 6.



Captive retaining nut (part of body).

Body section

Supplied washer = 2 1/2"OD x 3/8"ID

OR

Supplied washer - 2 12"OD x 7/16"ID MOUNT 6.

Supplied bushing - 67883

Steel sleeve as part of bushing

Chassis section

Supplied bushing - 67817

Supplied washer = 2 1/2"OD x 3/8"ID

OR

Supplied washer - 2 12"OD x 7/16"ID MOUNT 6.

Supplied bolt 3/8"-16 x 3 1/4"

OR

Supplied bolt 7/16"-14 x 3" MOUNT 6

Body Mount 6:

NOTE: Take note of the original fitted bolts to determine which is used in your application

May use Bolts 7/16"-14 x 3 1/2" and washer 7/16"ID.