

Fitting Instructions #2750IS

Mitsubishi Pajero NM, NP, NS, NT & NW

Rear differential bushes



Note this instruction sheet can be used for installing SPF2750K and TRC2750

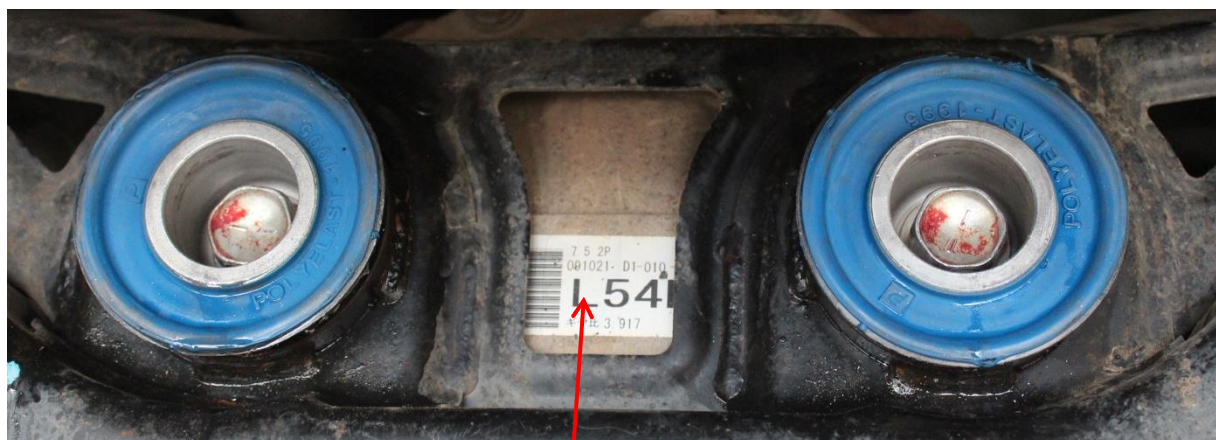
- Jack up vehicle and support on jack stands/hoist
- Support diff housing with stand
- Loosen bolts on the rear diff bushes and take bolts off
- If bushes are fully separated from outer tube, take inner out and using air hack-saw cut the outer tube, careful not to cut the housing
- If bushes aren't separated and rubber legs are still attached, cut rubber legs with air hack-saw then cut outer tube as above
- Take out outer tube and clean around housing, ensuring housing is free from any debris inside and out
- Using lead-in on the bushing as a guide, centre bush in housing and begin to push in
- **For SPF2750K**, check diagram on next page to make sure the voids are aligned accordingly.
- When bush is half way into housing, insert bolts into bushes, ensuring washers supplied are located between the diff and the bush and begin to tighten bolts onto diff housing – **Note Washers are not required on fitment of SPF2750K**
- Once tight (DO NOT OVER TIGHTEN), push into housing using hammer and flat plate
- If bush doesn't push in all the way, tighten bolts again and knock in with hammer and flat plate, repeat this process until bush is fully into housing
- Once bush is fully into housing, ensure bolts are tightened to manufactures specifications

Fitting Instructions #2750IS

Mitsubishi Pajero NM, NP, NS, NT & NW

Rear differential bushes

TRC2750



Diff resting against subframe = bush not full in housing

Diff not resting against
subframe housing



Need to check here to be sure bush is fully
into housing

SPF2750K



Align voids so they are vertical