

# Fitting Instructions #RC0009RZIS

Mazda BT-50 / Ford Ranger

*Sway Bar Stabiliser Kit*

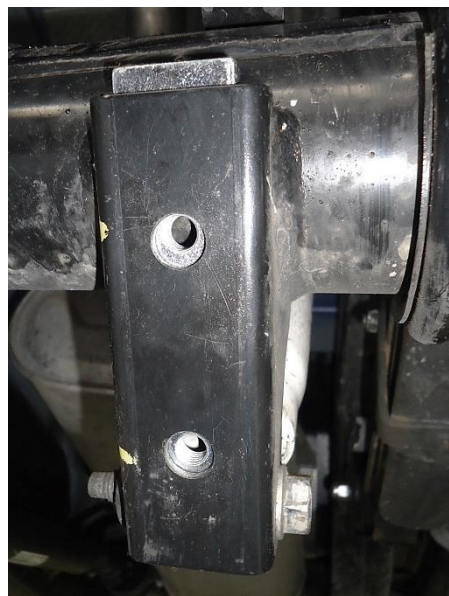
**Fitting of this bar should be carried out by qualified persons only.**

- Jack the Vehicle and place on support stands;
- Fit the L Brackets, U-bolts and nuts as per the photo. On the left side the wiring loom inside of the chassis rail needs moving out of the way to allow fitment(return it to original position when finished);

**Note** position of the LH bracket in the photo and match the RH side. Do not over tighten.



- Slide the 2 Flat plates with the 3 threaded holes into the bracket mounts on the diff.

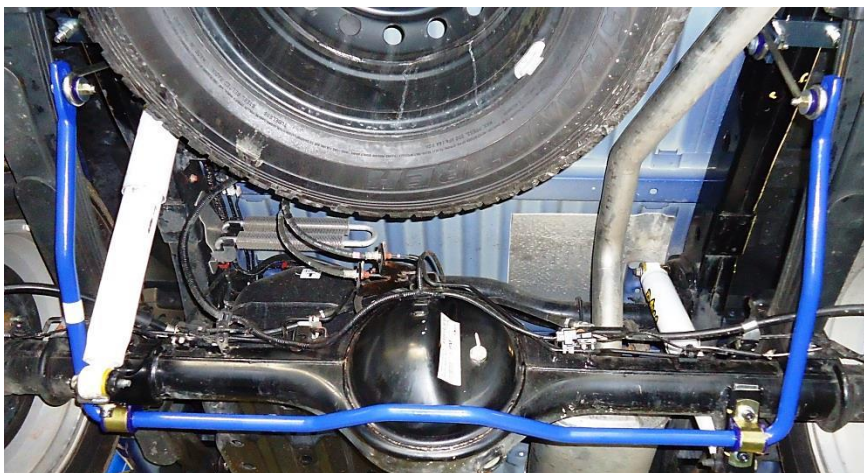
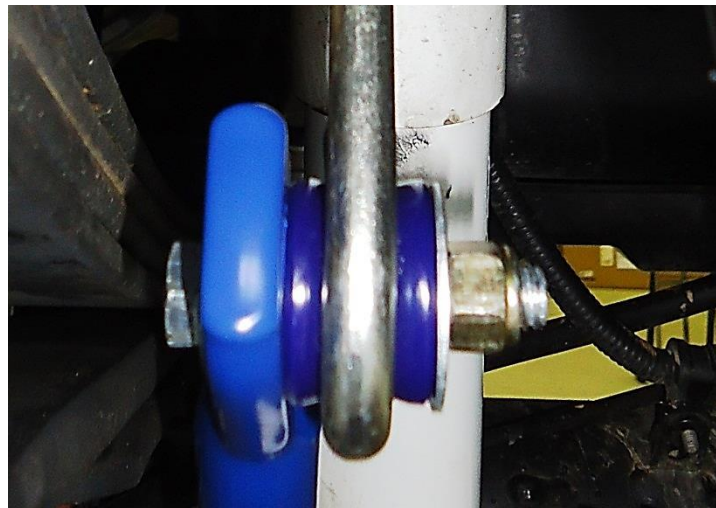
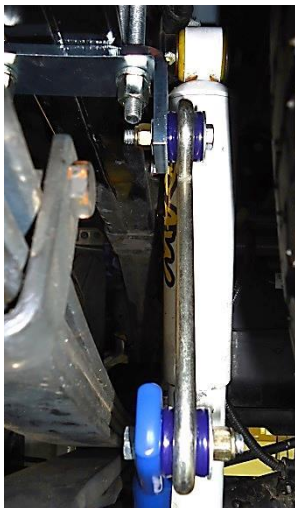


## Fitting Instructions #RC0009RZIS

- There are 2 D brackets provided. The longer one goes on the LH side of the Diff. Fit the bar to the diff using D bushes, D brackets, Cap screws spring and flat washers. You may need another person to hold up the sway bar while you attempt this;



- Swing the bar up towards the rear and fit the sway bar links, bolts, nuts and washers provided. We recommend the middle hole is used initially.



**Recheck positioning and Torque all bolts.**

**Please drive carefully to get used to the new handling characteristics.**