

# Fitting Instructions



SKU

PRODUCT

**T7K784**

## **TAG Heavy Duty Towbar to suit KIA Sorento (03/2020 - on)**



Scan for latest version of these instructions

### SPECIFICATIONS

- Towbar Class: Heavy Duty
- Towing Capacity: 2000kg

### IN THIS GUIDE

- Fitment Instructions
- Torque Settings
- Warranty Info

# Towbar Fitting Instructions



## Step-By-Step Instructions

### Warning:

- This product is for towing purposes only and must only be loaded as shown in your vehicle Owner's Manual.
- This towbar is NOT to be drilled, cut, welded, or modified in any way.
- Check behind chassis rail and body panels before drilling to ensure no hazards are present
- All load ratings shown are under the assumption your trailer has a functional braking system installed
- When installed in positions other than the one depicted in these instructions the Tow Ball Mount may interfere or obstruct certain features of your vehicle (tailgate opening, Chassis clearance, etc.)

### General:

- Before fitting this towbar read fitting instructions and check installation hardware is correct.
- Check that the towbar is suitable for the vehicle and be wary of any changes to the vehicle design that may conflict with the fitting of this towbar. (Tray, Canopy, Suspension etc.)
- After drilling, blow any filings clear, remove any swarf and treat exposed metal with a rust inhibitor.
- The high tensile fasteners supplied with this product are an integral feature to achieving the specified rating, if replacement is required ensure that fasteners of the same grade (8.8) & quality are used. Contact an authorised TAG distributor or the TAG fitment centre - (07) 3208 3022 - if further information is required.

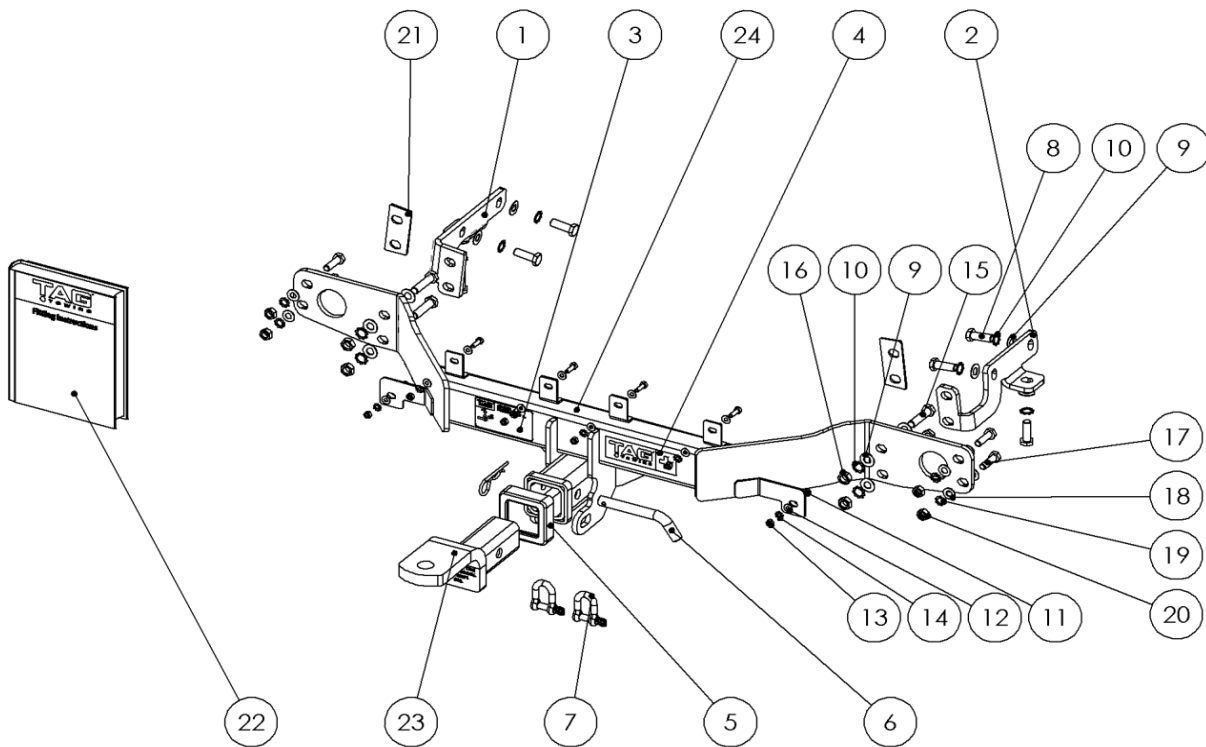
### Towbar Maintenance and Care:

It is recommended, when not in use, the Tow Ball Mount assembly and class 4 Pin and Clip is stored inside the car away from moisture to prevent standing water from forming rust. Inspect to ensure, on regular basis, fasteners are torqued to the specifications below and in good condition.

**Ensure that the fitting instructions are read and understood prior to fitment**

**Place these instructions in the vehicle's glovebox after installation is completed**

# Towbar Fitting Instructions



Tools Required: Spanners, Sockets, Torque wrench


ITEM NO.	DESCRIPTION	QTY.
1	Chassis Bracket - PS	1
2	Chassis Bracket - DS	1
3	TAG Compliance plate	1
4	TAG + Foil Sticker 123x38	1
5	Cover Hitch Receiver Collar TAG	1
6	Class 4 Pin & Clip	1
7	TAG D-Shackle - 10mm, 1000kg, Galvanised	2
8	M12x1.25x35 Bolt	6
9	M12 Flat Washer Zinc Clear	14
10	M12 Shakeproof Washer	10
11	M6x20 1 PITCH B/O GR8.8 METRIC THREAD ZINC CLEAR	6
12	M6 FLAT WASHER FLAT ROUND ZINC CLEAR	12

ITEM NO.	DESCRIPTION	QTY.
13	M6 1 PITCH NUT METRIC HEX	6
14	M6 Shakeproof Washer Teeth Outside	6
15	M12x50 Bolt - Metric, Fine, Hex Head	4
16	M12x1.25 Nut	4
17	M10x1.25x35 Bolt	4
18	M10 FLAT WASHER FLAT ROUND ZINC CLEAR	8
19	M10 Shakeproof Washer	4
20	M10 X 1.25 PITCH NUT HEX DIN 9	4
21	Body Mount Bracket Spacer	2
22	Fitting Instruction - T7K784	1
23	TAG Tow Ball Mount - 178m Long, 90° Face, 50mm Square Hitch	1
24	Weld Assembly T7K784	1

# Towbar Fitting Instructions



## Step 1. Remove Bumper

- a. Lower spare wheel & remove.
- b. Remove mudflap via 2x phillips head screws & 1x plastic scrivet.
- c. Remove 2x plastic scrivets from the inner guard liner and 1x hex head screw.
- d. Remove plastic scrivets from the lower edge of the bumper rearward of the wheel arch.
- e. Repeat steps **a-c** on opposite side.
- f. Disconnect sensor harness behind PS inner guard liner.
- g. Open the boot and remove the taillight assemblies via 2x phillips head screws located behind the covers. **(Lights are remove rearward. See picture).**
- h. Remove the 2x plastic scrivets from below the light recess.  

- i. From under the vehicle remove & discard 2x M10 bolts from the forward face of the chassis flange. Repeat on opposite side.
- j. Beginning at the wheel arch, carefully peel the bumper outward and along towards the taillight recess. Repeat on opposite side.
- k. Some force may be required to separate the bumper from the clips below the boot opening.
- l. Set bumper aside for further dismantling.
- m. Release the exhaust from the 3 rear-most hangers and support if necessary.
- n. Locate the join in the body at the inside lower edge of each chassis (see picture). Using pliers or similar, gently bend the join outward. **(see picture)**



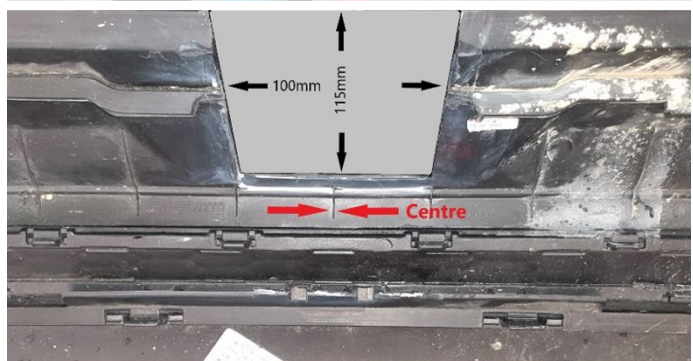
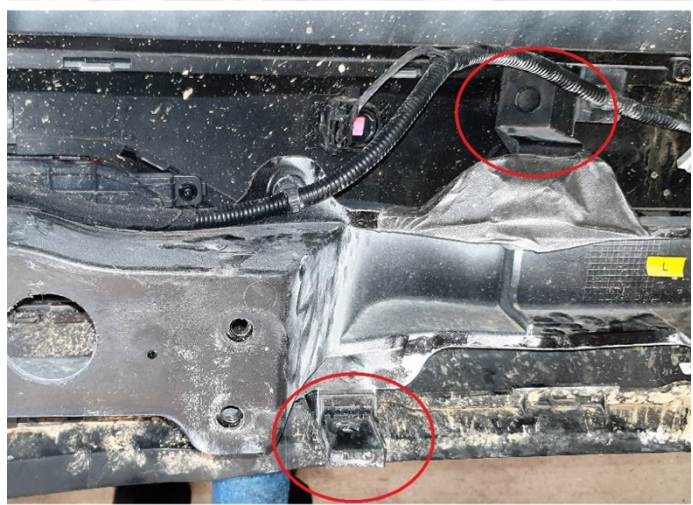
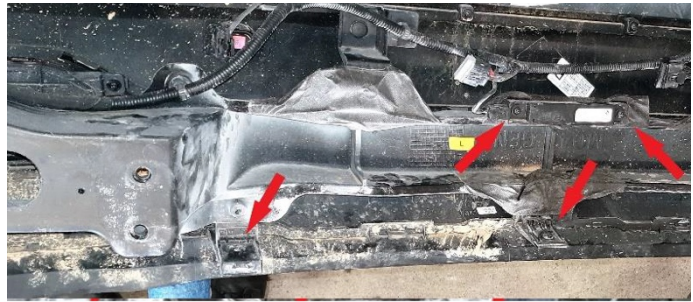
Join in Body. Bend toward outside of vehicle

# Towbar Fitting Instructions



## Step 2. Remove Crash-bar & Trim Bumper

- Remove the long rectangular key FOB sensor from the bumper via 2x screws. Discard the screws.
- Disconnect the reverse sensor harness from the crash bar.
- Release the crash bar from the bumper via 2x top scrivenets & 3x bottom scrivenets. Discard 1x scrivet.
- Remove the (4) four small plastic L-shaped brackets screwed to the crash bar. Discard the screws.
- Using the photo as a guide, cut the lower bumper to suit the hitch box. Clean the cut edges & apply pinch-weld. (100mm wide x 115mm high)



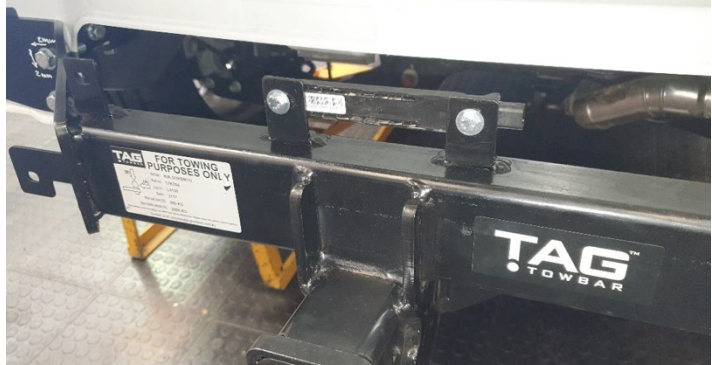
Phillips Screwdriver, Trim removal tool, Air hacksaw, tape measure, marking pen.

# Towbar Fitting Instructions



## Step 2. Remove Crash-bar & Trim Bumper

- a. Loosely fasten the auxiliary chassis brackets to the base and insides of each chassis rail with M12x35 bolts, flat & shakeproof washers.
- b. Lift main bar up to rear of body and loosely fasten with M10 bolts, washers & nuts in outer most holes.
- c. Insert M12x50 bolts into inner most holes & align with auxiliary chassis brackets. Fasten loose with flat & shakeproof washers & nuts.
- d. Tighten bolts in auxiliary chassis brackets followed by bolts on rear flange.
- e. Attach the key FOB sensor to the top centre tabs of the towbar with M6 fasteners.
- f. Loosely attach the plastic L-shaped brackets from the crash bar onto the remaining tabs in the same orientation as original with M6 fasteners.
- g. Refit bumper bar in reverse of Step 1 remembering to reconnect all wiring looms.
- h. Attach bumper to L-shaped plastic brackets using original plastic scrivenets.
- i. Raise the spare tyre into position.





## Torque table for bolt tightening

Diameter	Pitch	Grade	Torque	Unit
M8	1.25	8.8	29	Nm
M10	1.25	8.8	57	Nm
M10	1.50	8.8	44	Nm
M12	1.25	8.8	101	Nm
M12	1.50	8.8	97	Nm
M12	1.75	8.8	77	Nm
M14	2.00	8.8	122	Nm
M16	2.00	8.8	190	Nm
<b>Imperial Bolt Torque Settings</b>				
3/8"	UNC	8	44.75	Nm
1/2"	UNC	8	108.5	Nm

## TAG Warranty Statement

SWD warrants your TAG Towbar for its full product life under the following conditions:

- You can show proof of purchase.
- The towbar has been correctly installed by a suitably qualified installer.
- The towbar has not been modified or abused in any way and has only been used for the purpose intended.
- The towbar was not fitted second hand to your vehicle.

The extent of this warranty includes materials and workmanship used in the manufacture of the towbar and is to the equivalent value of current, full replacement cost.

Nothing stated or implied in this warranty limits in any way, the statutory rights that you may have.

To make a claim visit the original installer in the first instance or, if you are unable to or are not satisfied with their help, then contact us direct by phone on 1300 669122 or visit [www.swd.com.au](http://www.swd.com.au)