



ELITE 3-LOOP WINCH BAR

FITTING INSTRUCTIONS



MAZDA BT50 PRO 2011-2019

PK105FG1MA11E_RMB_UPMB ,PK105FG1MA11E_RMB_UPO
PK105FG1MA11E_RO_UPMB ,PK105FG1MA11E_RO_UPO

Fitting Time : approx. 3 hours



BULL BAR SAFETY NOTICE:

INSTALLATION SHOULD ONLY BE DONE BY APPROPRIATELY QUALIFIED OR EXPERIENCED PERSONS
IN ACCORDANCE WITH THESE INSTRUCTIONS.

IT IS THE RESPONSIBILITY OF THE INSTALLER TO ENSURE THAT THE PRODUCT IS CORRECTLY FITTED.

WARNING:

- Do not attach Vehicle Frontal Protection System (**VFPS**) to the vehicle using anchorages not intended for this purpose. (e.g. engine mounting bolts)
- Do not use this product for any vehicle make or model, other than those specified by the VFPS manufacturer.
- Do not remove the plaque or label from the VFPS.
- Do not modify the structure of the VFPS in any way.
- The VFPS has been produced to provide continued functionality of parking sensors and other "driver assist" features as closely as possible to Original Equipment. However, as all possible road conditions and combination of other accessories fitted to the vehicle which may affect functionality characteristics cannot be anticipated, ***the driver remains responsible at all times for properly controlling the vehicle, monitoring all "driver assist" features and intervening where required to ensure the vehicle is safely operated.***

IMPORTANT INFORMATION:

- Before installing the VFPS:
 - Check that all components, as listed in the assembly table, are available.
 - Thoroughly read all instructions.
- This product or its fasteners must not be modified in any way.
- These instructions are accurate as at the revision date and do not take into account any changes made by the vehicle manufacturer to vehicle design after the revision date or other accessories that are or have been fitted to the vehicle. Piak cannot be held responsible for such changes and appropriate enquiries should be made before installation.
- Before installing, inspecting and/or maintaining the VFPS, the work space should be safe and clear of fuel, debris, electrical or other components.
- During installation:
 - It is the responsibility of the installer to confirm correct operation/clearance of all components.
 - All holes drilled shall have all burrs and swarf removed then coated with a suitable rust preventative paint.
 - Ensure that all hardware is fastened to torque list as detailed in these instructions.

MAINTENANCE AND CARE:

To ensure continued safety and correct operation of the product, the VFPS must be routinely inspected and regularly serviced (including bolt torque checked for correct tension) by an appropriately qualified or experienced person.

The high tensile fasteners supplied with this product were used to achieve the specified rating. If replacement of the fasteners is required, fasteners of the same rating and quality must be used.

If this VFPS is fitted with a hinged number plate bracket, extra care must be taken when returning back to public roads following the use of the winch or conducting a deep water crossing.

The driver must ensure that the number plate bracket is returned back to the down position allowing full visibility of the number plate when returning to public roads.

EQUIPMENT:

These safety products should, at a minimum, be used when fitting or working on the product.



Protective Glasses



Hearing Protection

Installation in accordance with these instructions and adherence to warnings will ensure compliance with relevant regulatory and safety standards as at the revision date.

Failure to adhere to these instructions may affect the roadworthiness of the vehicle or cause personal injury, death or damage to property.

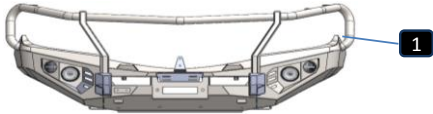
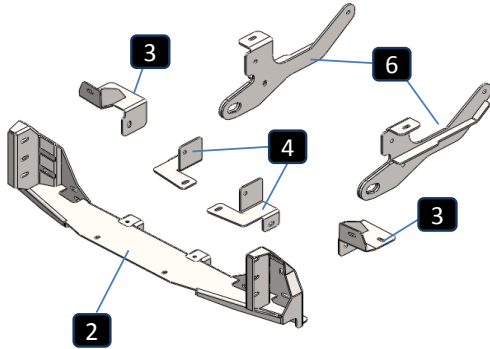
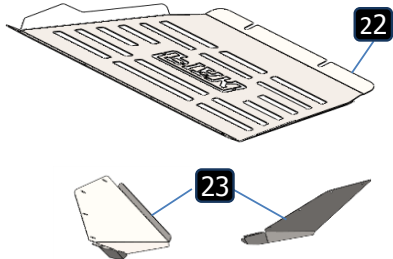
BY USING THIS PRODUCT YOU ACKNOWLEDGE AND AGREE THAT TO THE EXTENT PERMITTED BY LAW PIAK WILL NOT ACCEPT LEGAL OR OTHER LIABILITY FOR ANY LOSS, INJURY OR DAMAGE CAUSED BY INCORRECT OR INAPPROPRIATE INSTALLATION OR USE OF THE PRODUCT.

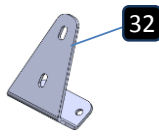
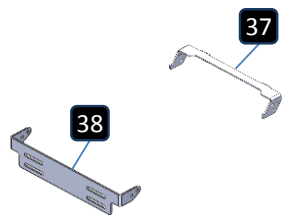

TOOLS REQUIRED

- | | | |
|--------------------------------|-----------------------------|---------------------------------------|
| 1. Metric Socket and Spanners | 2. 2" Masking tape | 3. Marking pen |
| 4. Drill and metric drill bits | 5. Test lamp or multi-meter | 6. Phillip and flat head screw driver |
| 7. Torque wrench | | |

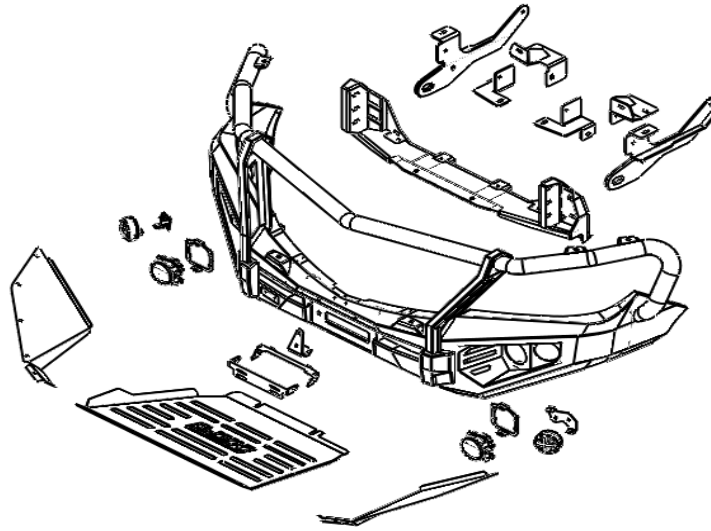
PARTS LIST

! Important : Check contents of fitting kit before commencing fitment and report any discrepancies.

Steel Bull Bar			
Item	Component Name	Q'ty	Remarks
1	Winch Bull Bar	1	
Chassis Mounting Bracket			
Item	Component Name	Q'ty	Remarks
2	Chassis Mount Bracket	1	
3	Mount Bracket Upper (LH/RH)	2	
4	Mount Bracket Lower (LH/RH)	2	
5	Mount Support & Recovery(LH/RH)	2	
6	Flat Washer 4xØ48 mm.	2	
7	Hex Bolt M10x35x1.5	20	
8	Spring Washer M10	20	
9	Flat Washer M10 OD27	36	
10	Hex Nut M10x1.5	16	
11	Hex Bolt M10x30x1.25	4	
12	Flang Nut M10x1.25	4	
13	Hex Bolt M12x100x1.5	4	
14	Hex Bolt M12x35x1.5	6	
15	Hex Bolt M12x40x1.5	2	
16	Spring Washer M12	6	
17	Spring Washer M12	6	
18	Flat Washer M12 OD33	12	
19	Flat Washer M12 OD33	12	
20	Hex Nut M12x1.5	6	
21	Hex Nut M12x1.5	6	
Protection Plate			
Item	Component Name	Q'ty	Remarks
22	Protection Plate Center	1	
23	Protection Plate wing (LH/RH)	2	
24	Hex Bolt M6x20x1.0	10	
25	Spring Washer M6	14	
26	Flat Washer M6 OD20	10	
27	Cage Nut M6x1.0x3T	14	
28	Bottom Head Bolt M6x20x1.0	4	
29	Hex Bolt M10x35x1.5	2	
30	Flat Washer M10xOD27	2	

Winch Control Plate			
Item	Component Name	Q'ty	Remarks
32	Winch Control Plate	1	
33	Hex Bolt M6x20x1.0	2	
34	Spring Washer M6	2	
35	Flat Washer M6	4	
36	Flange Nut M6x1.0	2	
License Plate Bracket			
Item	Component Name	Q'ty	Remarks
37	License Plate Bracket (Inner)	1	
38	License Plate Bracket (outer)	1	
39	Hex Bolt M6x20x1.0	4	
40	Spring Washer M6	4	
41	Flat Washer M6	6	
42	Cage Nut M6x1.0x3T	2	
43	Flange Nut M6x1.0	2	
44	Button Head Bolt M6x20x1.0	2	
45	Flat Washer M6	4	
46	Nylon Washer M6	4	
47	Nyloc Nut M6x1.0	2	
Front Grill Bracket			
Item	Component Name	Q'ty	Remarks
48	Grille bracket	2	
49	Hex Bolt M6x20x1.0	2	
50	Button Head Bolt M6x1.0x20	2	
51	Hex Nut M6x1.0	2	
52	Flat Washer M6	2	
53	Flat Washer M6 OD14	4	

Components Overview



Torque Setting of Fastener

Mounting bolts must be tightened to torque's specified following ;

Bolt Diameter (mm.)	Class 8.8		Class 10.9	
	Torque (Nm.)	Torque (ft-lb.)	Torque (Nm.)	Torque (ft-lb.)
M6	10.5	7.7	15	11.1
M8	25.5	18.8	36.5	26.9
M10	50.5	37.2	72.2	53.3
M12	88	64.9	126	92.9
M14	140	103	200	148

FITTING PROCEDURE



- 1 Locate the vehicle in a suitable position.

Rest the bullbar on a surface that will not scratch the bar.



- 2 Use a flat blade screwdriver to remove the five clips securing the top of the grille. Retain for re-installing the grille.



- 3 Release the bottom clips and remove the grille from the vehicle. Store in a location where it will not be damaged.



- 4 Remove the plastic clip and M6 bolt from either side of the bumper near the headlights. Retain for re-fitment.

FITTING PROCEDURE



- 5 Remove and discard the bolts securing the lower section of the bumper.



- 6 Remove the screws retaining the inner guard to the bumper. Retain the top screw for re-fitment.

If fog lights are fitted unclip the wiring loom.



- 7 Gently unclip and remove the bumper from the vehicle. Place where it will not get damaged.

If unsure about bumper removal refer to the workshop manual.

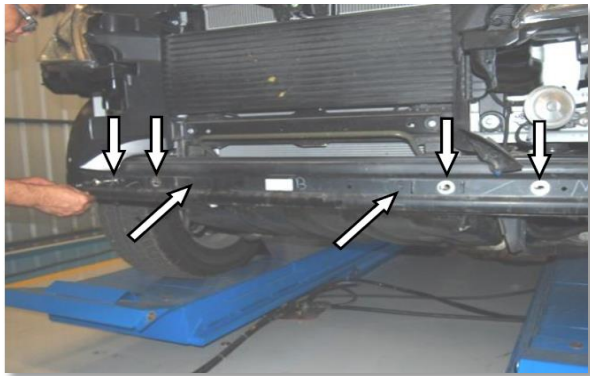


- 8 The condition after bumper bar removed from vehicle.

FITTING PROCEDURE

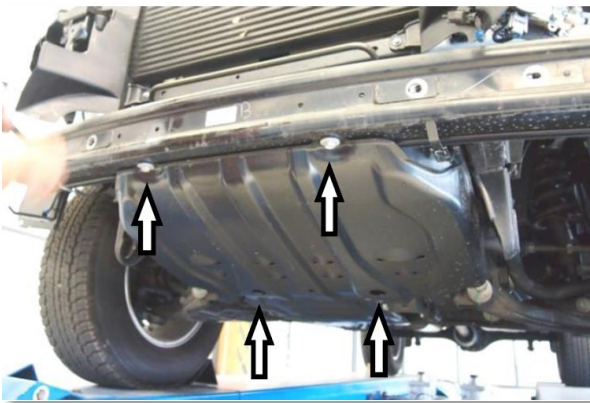


- 9** Remove and discard the plastic air deflector from the front intrusion beam.

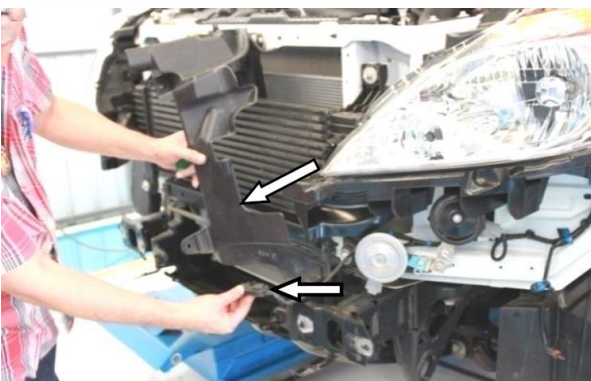


- 10** Remove and discard the four bolts from the front of the intrusion beam.

Remove the two plastic clips from behind the intrusion beam.



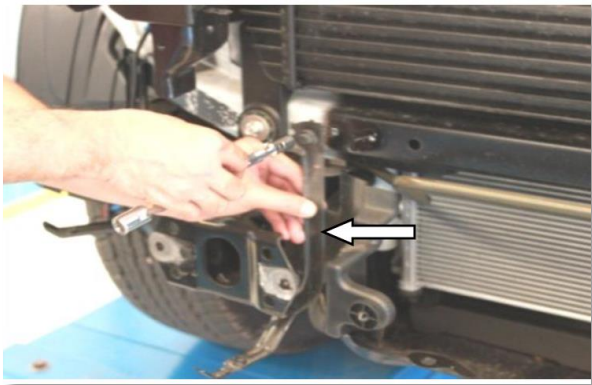
- 11** Remove and discard the two front bolts from the under body guard, loosen the two rear bolts. Remove and retain the under body guard.



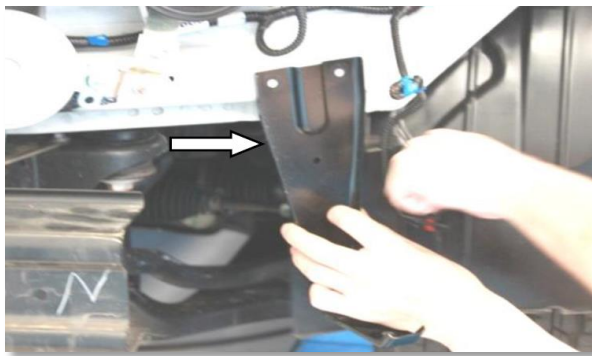
- 12** Un-clip the temperature sensor from the air guide.

Remove the air guides from either side of the vehicle.

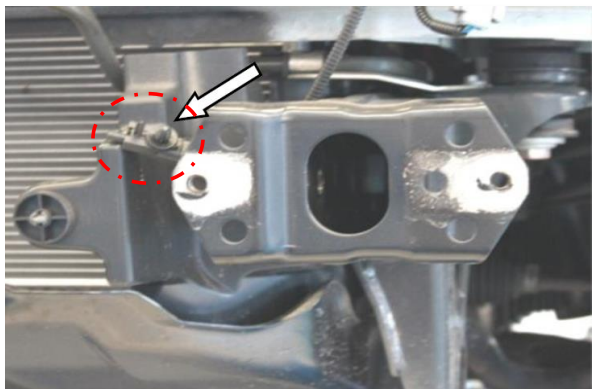
FITTING PROCEDURE



- 13** Remove and discard the inner bumper support brackets from either side of the vehicle.



- 14** Remove and discard the outer bumper support brackets from either side of the vehicle.



- 15** Drill two 5.5mm holes in the left hand air guide and re-attach the temperature sensor.



- 16** Remove and discard the small plastic part between the two bumper retaining brackets.

Remove the plastic bumper retainer next to the front guard from the vehicle, remove the lower section as shown. Replace the bumper retainer.

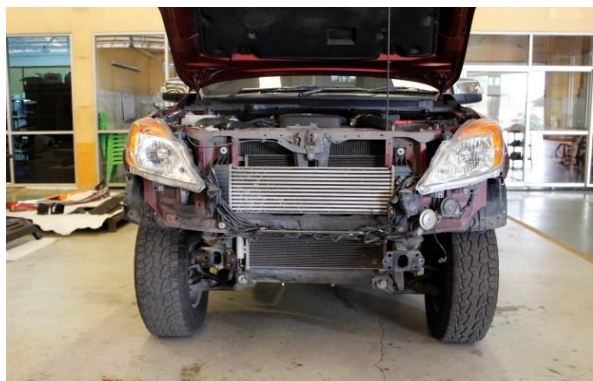
Repeat for the opposite side.

FITTING PROCEDURE



- 17** Remove the plastic bumper retainer next to the front guard from the vehicle, remove the lower section as shown. Replace the bumper retainer.

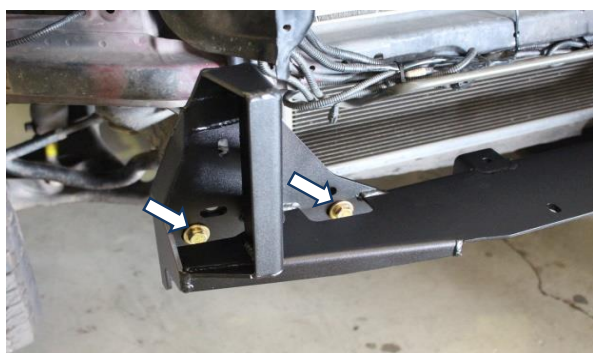
Repeat for the opposite side.



- 18** The condition of chassis mounting before fitting the mounting bracket.



- 19** lift the mounting bracket attach to the chassis.



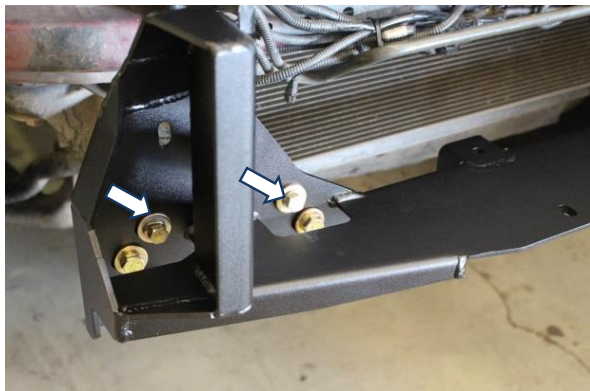
- 20** Secure with two M10 bolt (M10x35x1.5), spring washer, flat washer and hex nut.

Repeat for the opposite side.

FITTING PROCEDURE

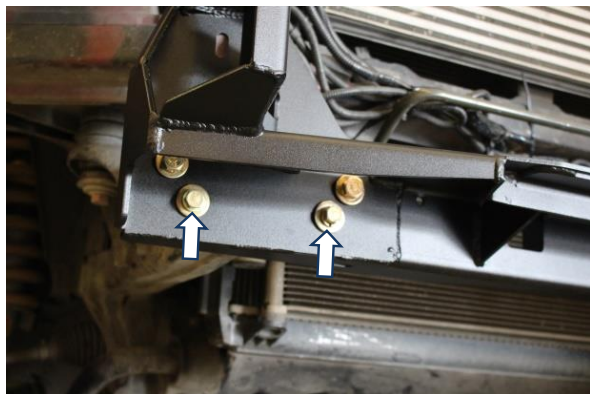


- 21** The condition after Secure with four M10 bolt (M10x35x1.5), spring washer , flat washer and hex nut.



- 22** Add two Secure with M10 bolt (M10x35x1.5), spring washer , flat washer and hex nut.

Repeat for the opposite side.



- 23** Add two secure with M10 bolt (M10x35x1.5), spring washer , flat washer and hex nut.

Repeat for the opposite side.



- 24** Bring The mount bracket upper fit with chassis mount bracket.

FITTING PROCEDURE



- 25** Secure with one M10 bolt (M10x35x1.5), spring washer , flat washer and hex nut.

Repeat for opposite side.



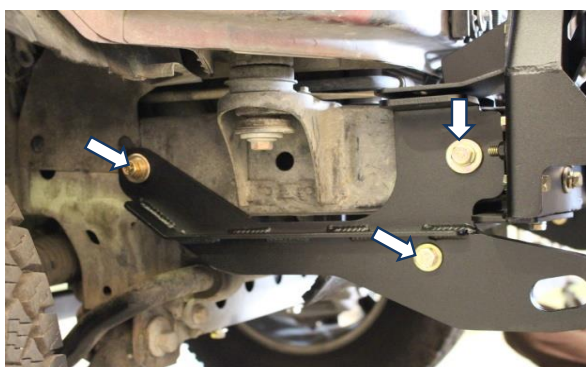
- 26** Bring The mount bracket lower fit with chassis mount bracket.

Secure with one M10 bolt (M10x35x1.5), spring washer , flat washer and hex nut.

Repeat for opposite side.



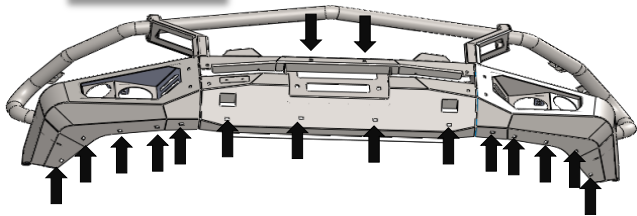
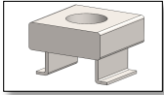
- 27** Attach chassis support bracket onto the mount support recovery.



- 28** Between chassis witch mount support recovery spacer flat washer \varnothing 48mm.The hole back of support cover then Secure by two M12 bolts (M12x100x1.5), flat washers and spring washers ,hex nut both front and rear side top Secure by one M12 bolt (M12x40x1.5), flat washers and spring washers,hex nut .

Repeat for opposite side.

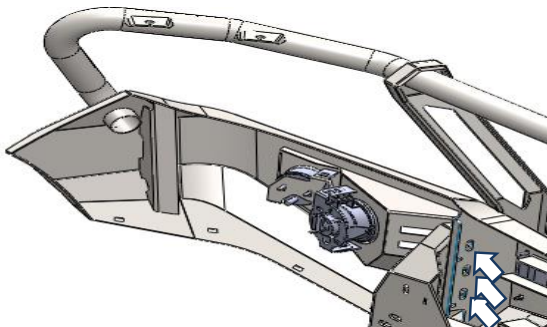
FITTING PROCEDURE



- 29** Insert sixteen M6 cage nuts onto the bullbar as indicators.

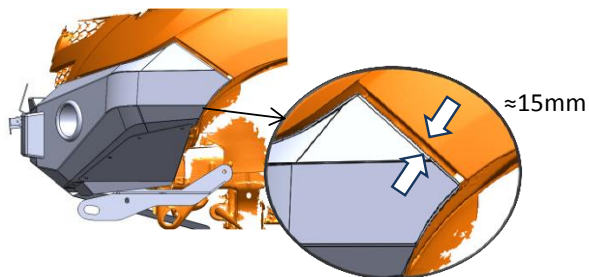


- 30** With the help of an assistant lift the bar onto the chassis of the vehicle.



- 31** Secure bull bar onto the chassis mounting bracket by using three M12 bolts (M12x35x1.5), spring washers, flat washers and hex nut.

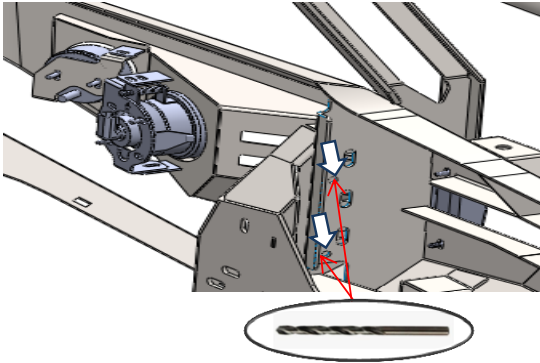
Repeat for the opposite side.



- 32** From Article 31, leave a space between the bumper ear and the car about 15 mm.

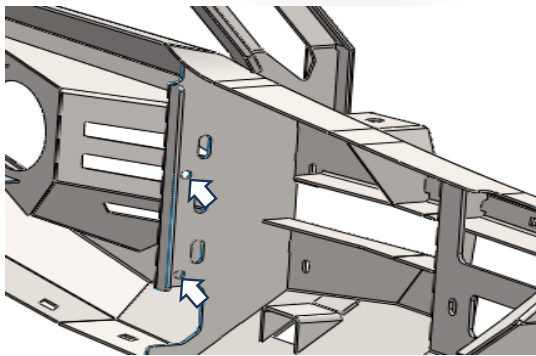
Repeat for the opposite side.

FITTING PROCEDURE



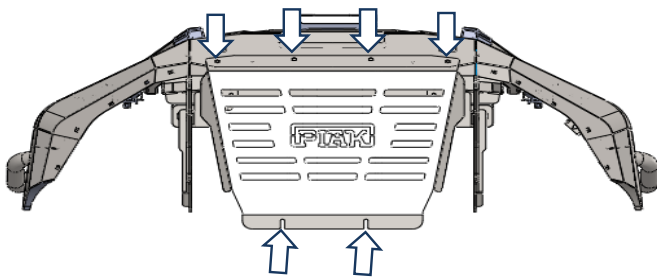
- 33** Drill a pilot hold through both section of their inintusion beam .using a stept drill or similar ,enlarge the holes the hole to 10 mm.

Repeat for the opposite side.

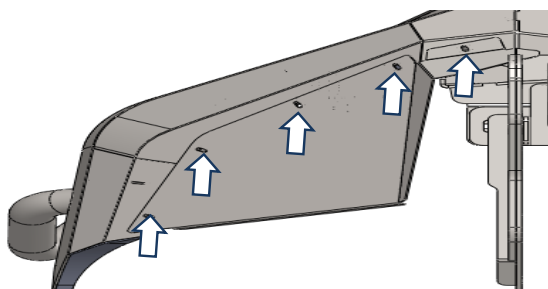


- 34** Using tow using M10 bolt (M10x35x1.5) and flange nut as shown.

Repeat for the opposite side.



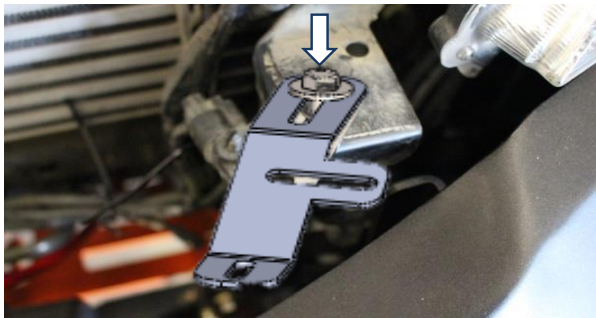
- 35** Fit center protection plate onto the bull bar and secure with four M6 button head bolts (M6x20x1.0), spring washers , flat washers and two M10 bolt (M10x1.5x35)spring washers , flat washers.



- 36** Fit outer protection plate through the protection plate bracket by using M6 bolt (M6x20x1.0), spring washer and flat washer.

Repeat for the opposite side.

FITTING PROCEDURE



- 37** Install the grille bracket MAZDA BT50 PRO 2011/2017 and the car body
Secure by use M6 bolt (M6x1.0x20) flat washer.

Repeat for the opposite side.



- 38** Find the location of the piercing and use the mark.

Repeat for the opposite side.

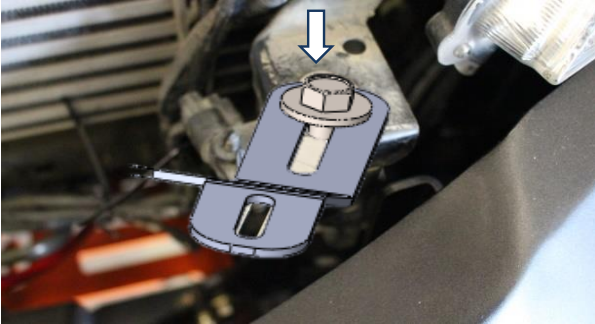


- 39** Use M 6 mm. hole drill to hold the bolt.



- 40** Re-fit the front grill MAZDA BT50 PRO 2011/2017 removed earlier to the vehicle by using clips and button head bolt (M6x1.0x20) ,hex nut, and flat washer.

FITTING PROCEDURE



- 41** Install the grille bracket MAZDA BT50 PRO 2018 and the car body
Secure by use M6 bolt (M6x1.0x20) flat washer.

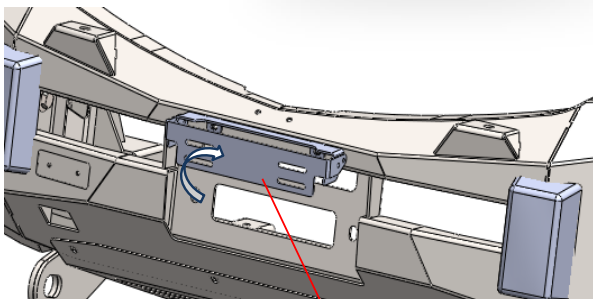
Repeat for the opposite side.



- 42** Do the same as Article 39 and Article 40 but change grill are MAZDA BT50 PRO 2018



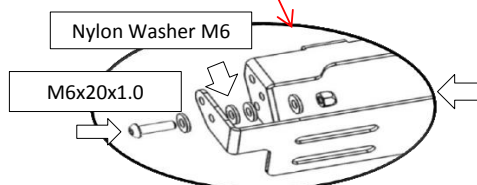
- 43** Re-fit the front grill MAZDA BT50 PRO 2018 removed earlier to the vehicle by using clips and button head bolt (M6x1.0x20) ,hex nut, and flat



- 44** Assemble License plate bracket by using two M6 button head, flat washer, Nylon Washer M6 and nyloc nut as shown.

Do not fully tighten.

Secure the license plate to the bracket and place to the bar by using the supplied M6 bolt kits.



FITTING PROCEDURE

