

# Instructions

## Front Control Arm Bushings

**N.B:** This instruction sheet should be used in conjunction with the workshop manual and proper safety procedures followed.

### Application - Honda Civic FK

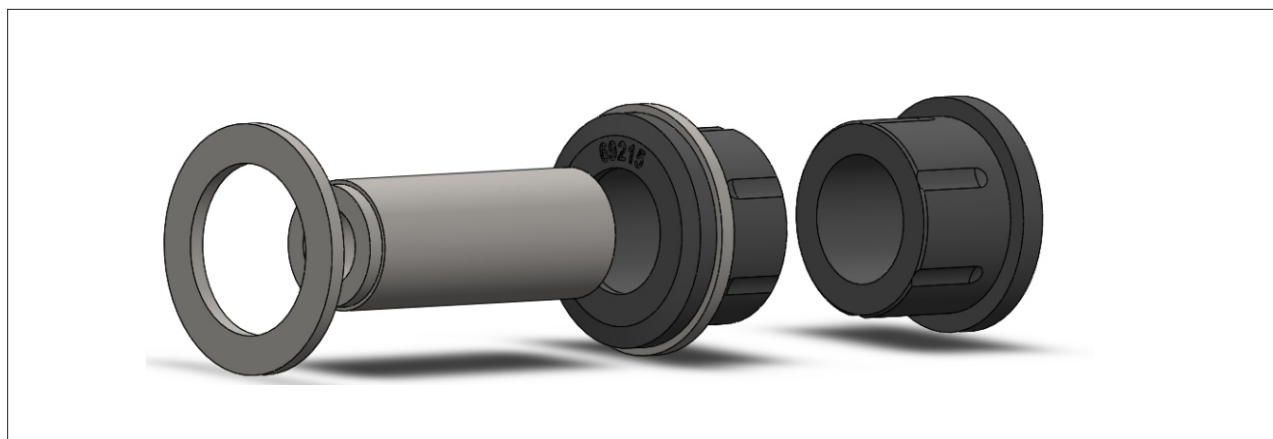
(Refer current catalogue for complete listing)

- Raise vehicle evenly and safely support.

*Never rely on a Jack only*

- Proceed to remove front wheels. Un-bolt front control arms.
- The original bushing will need to be pressed out or drilled out. If drilling - drill closest to the welds on control arm.
- Refer image below for bushing installation.
- Grease bushing internal diameter and face.
- Push in supplied steel tube and washer as per below - note steel tube is stepped.
- Re-fit arm to vehicle.
- A wheel alignment after install is recommended.

**Contents** - Bushing 69214 x2  
 - Bushing 69215 x2  
 - Steel tube 24x14x60 x2  
 - Steel washer 38x22x3 x2  
 - Grease



**N.B:** It is recommended that a licenced workshop or tradesperson carry out the above procedure and that workshop manual and relevant safety procedures are followed in addition to the above.

# Instructions

## Performance Ball joints - Camber Adjustable

This instruction sheet should be used in conjunction with the workshop manual and proper safety procedures followed.



**WHITELINE** Performance ball joints are designed to offer easy camber adjustment - offering the ability to increase negative camber or to balance the vehicle's L and R camber values.

**Application** - Honda Civic  
- Si and Sport  
- RS Sedan 2019-on  
- RS Hatch 2020-on  
(vehicles with M14 ball joints)

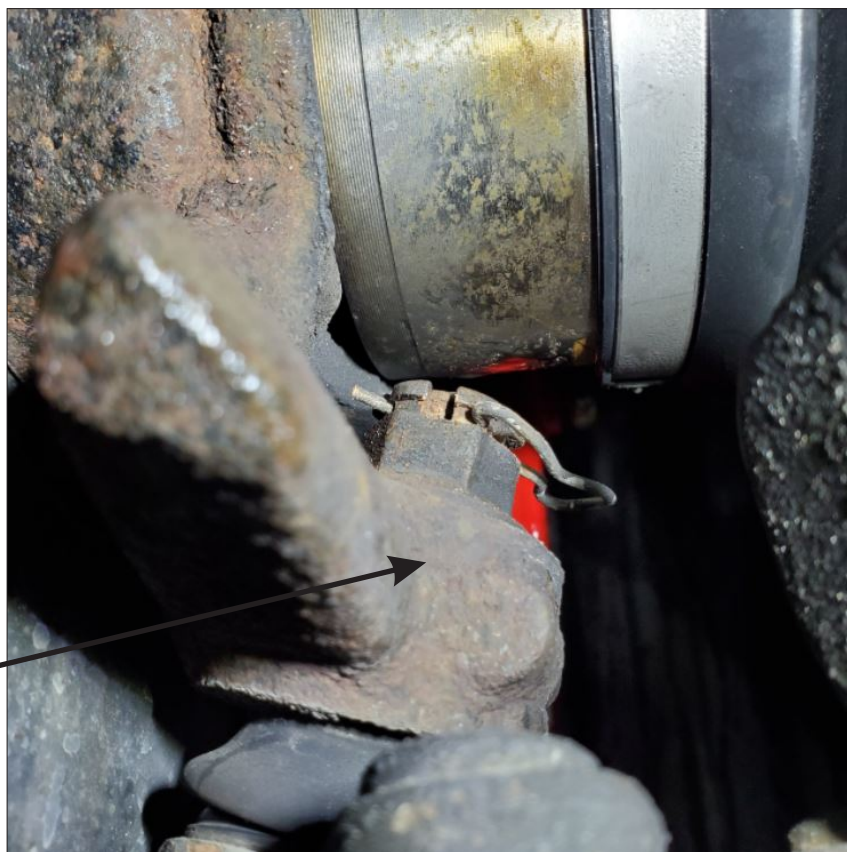
**Contents** - 2x Performance Engineered ball joints.  
- 6x M12x30 flange bolts  
- 6x M12 flange nuts

**WHITELINE** recommends alignment settings are noted before install.

- Start by raising the vehicle evenly - safely support with jack stands.

*Never rely on a Jack only*

- Proceed to remove front wheels.
- Remove OE safety pin. Using a spanner, loosen the OE flange nut (but do not remove yet).
- Strike the Hub to jar the taper and loosen ball joint.



N.B: It is recommended that a licenced workshop or tradesperson carry out the above procedure and that workshop manual and relevant safety procedures are followed in addition to the above.

# Instructions Performance Ball joints - Camber Adjustable

This instruction sheet should be used in conjunction with the workshop manual and proper safety procedures followed.



- Loosen the lower 3 control arm nuts  
Completely remove nuts.



- Remove Ball Joints from vehicle.  
Do not discard upper flange nut.

N.B: It is recommended that a licenced workshop or tradesperson carry out the above procedure and that workshop manual and relevant safety procedures are followed in addition to the above.

# Instructions

## Performance Ball joints - Camber Adjustable

This instruction sheet should be used in conjunction with the workshop manual and proper safety procedures followed.



- Install new WHITELINE ball joint to Hub.

**Note** - re-use OE upper flange nut.

A new split pin is supplied if old unit is damaged or lost.



- Bolt up control arm with new supplied nuts and bolts.
- Tighten M12 bolts to 110Nm

**IMPORTANT** - a wheel alignment is required immediately after install.

- Re-check all bolts after 100kms

N.B: It is recommended that a licenced workshop or tradesperson carry out the above procedure and that workshop manual and relevant safety procedures are followed in addition to the above.