

Install Guide

Front Diff Drop Kit

Toyota Hilux 2005-On



Note: These components must be fitted by a qualified person only, as per the manufacturers' service manual. Also, all relevant safety procedures are followed in addition to the following. Photos are an indication and may vary slightly in appearance from the actual product.

Kit Contents:

- 1x Rear Bracket
- 1x RH Bracket
- 1 x LH Bracket
- 1x Vacuum hose
- 2x M14 Hex Bolts
- 1x M14 Socket Bolt
- 1x M14 Nyloc Nut
- 3x Large OD M14 washers
- 3x Medium OD M14 Washers
- 1x M14 rectangular washer
- 6x Spacers
- 6x M8 Bolts
- 6x M8 washers
- 6x M8 Spring washers

1. Raise and Support the Vehicle

- Lift the vehicle by the chassis and secure it with jack stands or a hoist.
- This job can also be done on the ground or a 4-post hoist.

2. Remove Underbody Protection

- Use 10mm and 12mm sockets to remove the 3x underbody panels. There are 14x M8 bolts and 2x M6 bolts.

3. Disconnect Components

- Detach the vacuum hose from the differential.
- Use a 12mm Allen key to remove the rear diff mount nut.
- If there's a cross brace behind the diff, remove the 2x 14mm bolts and take out the brace for better access.

4. Remove the Rear Diff Mount

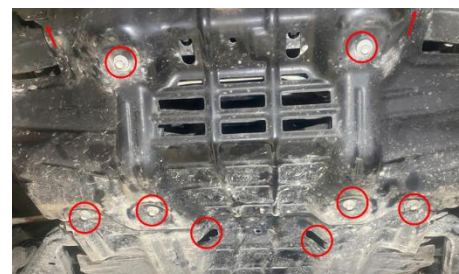
- Jack up the rear of the diff to access and remove the 2x 17mm hex bolts securing the rear bracket.
- Remove the rear mount from the vehicle.

5. Support the Differential

- Use jacks and stands to secure the diff before removing the remaining mounts.

6. Remove Side and Front Mounts

- Use a 19mm socket to remove:
 - 2 bolts on the RH diff bracket.
 - 3 bolts on the LH diff bracket.
- Use a 22mm socket to loosen and remove the 2x front diff mount-crossmember bolts.
- Retain the 2x 19mm hex nuts from the top of the crossmember for reinstallation.



Install Guide

Front Diff Drop Kit

Toyota Hilux 2005-On



7. Replace the Rear Mount Bushing

- Remove the OEM bushing from the rear mount using a press or hammer. Support the bracket, not the rear washer and press down on the stud.
- Re-install the OEM bush assembly onto the new rear diff bracket as shown.



8. Install the Rear Diff Bracket

- Jack up the rear of the diff and loosely install the bracket onto the crossmember with the 2x M12 OEM bolts (don't install the OEM nut yet).
- Insert the LH bolt into the bracket before installation. You will need to move the diff forward to align the bolts

9. Install the RH Diff Bracket

- Attach the RH mount to the crossmember using the supplied M14 bolts and washers with a 21mm socket:
 - The larger M14 washer goes on the bottom of the bushing.
 - The smaller washer goes on the top.
- Reuse the OEM nut on the crossmember but leave it loose for now.



10. Install the RH Rear Bushing

- Slide the supplied rectangular washer into the crossmember from the LH side, aligning it with the far RH hole.
- Insert the supplied M14 socket head bolt through the washer and rear RH bushing.
- Ensure M14 washers are installed on both sides of the bushing, then loosely tighten with the included nyloc nut.

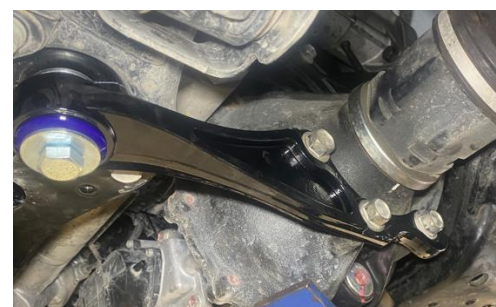
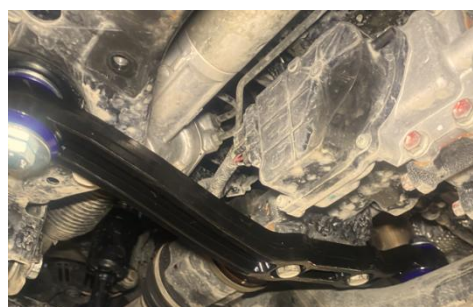


11. Install the LH Diff Bracket

- Bolt the new LH bracket to the diff using one OEM bolt.
- Align the front crossmember hole and install the supplied M14 bolt, washers, and OEM nut. Leave it loose.

12. Final Bolt Alignment

- Adjust the diff using the jack to align the remaining OEM bolts and install them.



Install Guide

Front Diff Drop Kit

Toyota Hilux 2005-On



13. Torque All Bolts

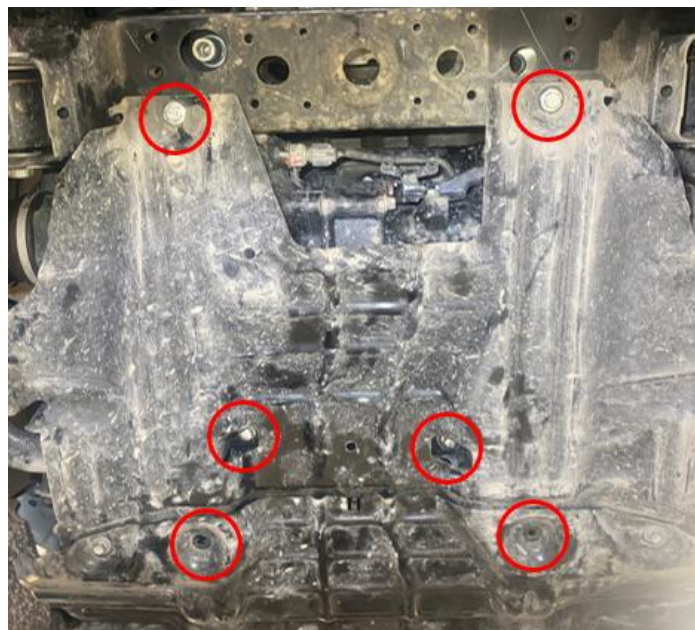
- Tighten all hardware to factory specifications, starting with the rear bracket.
- Reinstall the OEM nut on the rear bracket stud.

14. Replace Vacuum Line

- Remove the OEM vacuum line and replace it with the supplied extended vacuum line.

15. Reinstall Underbody Protection

- Start from the front and work backward.
- Use the 6x supplied spacers, M8 bolts, washers, and spring washers in the locations show in the image on the right, between the chassis and the underbody protection.
- Reuse the OEM bolts in the remaining locations.



16. Ensure everything has been re-installed and lower the vehicle safely back onto the ground.